

LEA Name : Pottstown SD
Address : 230 Beech St
Pottstown , PA 19464

County : Montgomery
AUN Number : 123466403
LEA Type : SD

Annual Financial Report Accuracy Certification Statement

For Fiscal Year Ending

6/30/2022

Pennsylvania Department of Education

&

Office of Comptroller Operations

PDE-2056: Intermediate Unit

PDE-2057: School District, AVTS/CTC, Charter School,
and Special Program Jointure

CERTIFICATION: By signing this page I agree that the electronic data submitted is a complete and accurate statement of the financial operations and status of the local education agency for the fiscal year. It has been prepared in accordance with generally accepted accounting principles and established Commonwealth of PA reporting guidelines.


Chief School Administrator Signature

12-21-22
Date


Board Secretary Signature

12/22/22
Date

Maureen Jampo

Contact Person

mjampo@pottstownk12.org

Contact Person E-mail Address

(610)970-6610

Ext :

Contact Person Telephone Number

(610)326-6540

Contact Person Fax Number

Audit Certification
Annual Financial Report:
For Fiscal Year Ending 6/30/2022
(Pursuant to PA School Code Section 218(b))

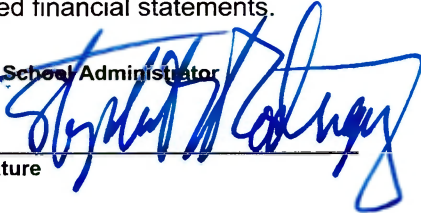
LEA Name : Pottstown SD
AUN Number : 123466403
County : Montgomery

Audit Certification Due: 12/31/2022


This certification is applicable to the Annual Financial Report data submitted through the Consolidated Financial Reporting System (CFRS).

CERTIFICATION: By signing this page I agree that the financial statements of the school have been properly audited as noted above pursuant to Article XXIV, and in the auditor's professional opinion, the Annual Financial Report (PDE-2057) submitted through CFRS is materially consistent with the audited financial statements.

Chief School Administrator


Signature _____ Date 12-21-22

Board Secretary


Signature _____ Date 12/22/22

Maureen Jampo

Contact Person

mjampo@pottstownk12.org

Contact Person E-mail Address

(610)970-6610 Ext :

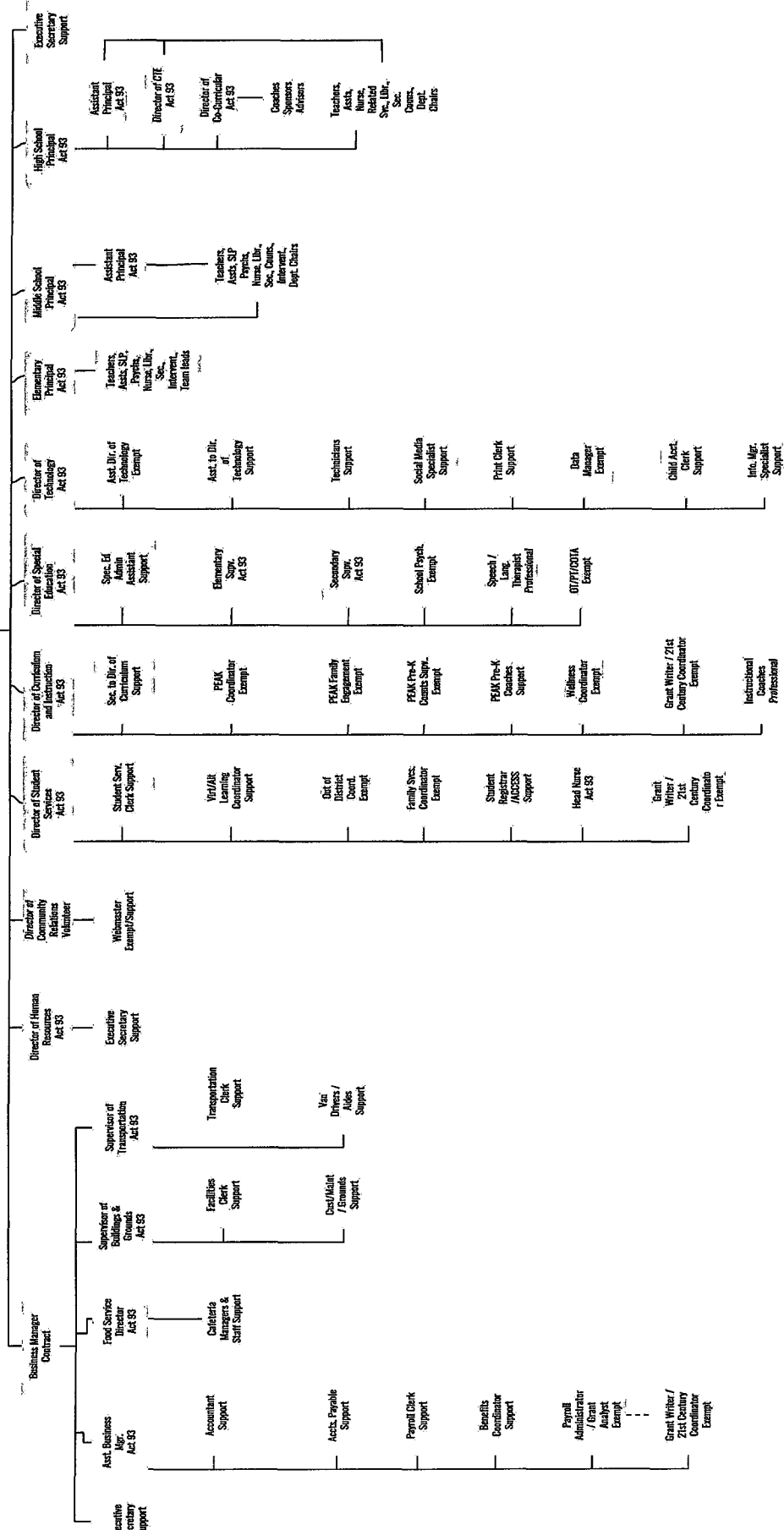
Contact Person Telephone Number

(610)326-6540

Contact Person Fax Number

9-Month
School Board

Superintendent
Contract



Pottstown School District - March 15, 2018



Book: Policy Manual

Section: 600 Finances

Title: Capital Assets / GASB Statement 34

Code: 622

Status: For Board Approval

Adopted: March 15, 2018

Last revised: December 17, 2020

Purpose

The Board recognizes the need to implement the required accounting and financial reporting standards stipulated by the Pennsylvania Department of Education.

The primary objectives of implementing the Governmental Accounting Standards Board (GASB) Statement 34 are to assure compliance with state requirements, and properly account for both the financial and economic resources of the district.

Definition

This policy applies to the district's acquisition and depreciation of capital assets. **Capital assets** include land, improvements to land, easements, buildings and building additions, building improvements, furniture, fixtures and equipment, equipment under lease, vehicles, works of art and historical treasures, construction-in-progress, and infrastructure. **Capital assets** are tangible assets used in operations and have initial useful lives extending beyond a single reporting period. Equipment will not change its original shape, appearance or character with use and it can be expected to last more than one (1) year with reasonable care and maintenance.

Authority

Participation of the school district in any such activity shall be in accordance with Board policy.[\[1\]](#)[\[2\]](#)

Delegation of Responsibility

The responsibility to coordinate the compilation and preparation of all information necessary to implement this policy is delegated to the Superintendent, Business Administrator or their designee.

They should be responsible for implementing the necessary procedures to establish and maintain a capital asset inventory, including depreciation schedules. The basis for depreciation, including groups of assets and useful lives, shall be in writing and submitted for review to the Board.

The Superintendent or designee shall prepare the required Management Discussion and Analysis (MD&A). MD&A shall be in the form required by GASB Statement 34.

The district's independent auditors shall review the MD&A, in accordance with SAS No. 52, "Required Supplementary Information".

Guidelines

Capital Asset Addition Overview

Purchased capital assets greater than \$5,000 should be recorded at historical/original cost. The cost of a capital asset should include capitalized interest and ancillary charges necessary to place the asset into its intended location and condition for use. Ancillary charges include costs that are directly attributable to asset acquisition, such as freight and transportation charges, site preparation costs, and professional fees.

Capital assets should be depreciated over their useful lives as

determined for each asset class. Land, and some land improvements, are considered inexhaustible, and are therefore not subject to depreciation.

Donations

Donated capital assets must be reported at fair market value plus ancillary charges, if any, at the time of donation. Donated assets are depreciated over their useful lives, as determined for each asset class. If determining historical costs is not practical due to inadequate records, reporting should be based on estimates of fair market value at the date of donation.

Depreciation

Depreciation is required for the district's capital assets. Depreciation is calculated using the straight line method. The district calculates depreciation on all capital assets reported in the district financial statements other than land and construction-in-progress.

Disposals

Sale of Capital Assets - When capital assets are sold, calculation of gain or loss on disposal is required. The calculation is based upon the amount of proceeds received less the net book value (cost less accumulated depreciation taken on the asset).

Trade-ins – The value given for a trade is part of the cost of the newly acquired asset. The costs and accumulated depreciation of the traded-in asset must be removed from the books. Any gain or loss resulting from the disposition of the asset will be recognized as a gain or loss on disposal.

Assets Acquired by Capital Lease

Assets acquired by capital lease are recorded at the net present value of the future minimum lease payments. A corresponding liability is established at this time. Assets acquired under the terms of capital leases are depreciated over the useful lives designated for the asset class.

Legal

1. 24 P.S. 218

2. 24 P.S. 613

Governmental Accounting Standards Board, Statement No. 34

Last Modified by Joanne Rhoads on April 18, 2018

Val Number	Description	Justification
16015	REP Fund 51: Object 300 is greater than object 500. Purchased services for food service contracted services should be coded to objects 571 and 572. Correct or enter a justification. REP Fund 51 Object 300: \$33,993.00 REP Fund 51 Object 500: \$1,452.00	Object 500 is comprised of \$1,330.15 for telephone service and \$122.02 for travel expenses.
30685	Revenue Detail: Current Tax Revenue amount cannot exceed 50% variance from prior year amount. Correct the data or enter a justification. 6153, Current AFR Rev Detail: \$819,899.44 6153, Prior AFR Rev Detail: \$544,064.84	After Covid related quarantines were lifted, there was increased real estate activity in 2021-22. Also the price of houses increased. This resulted in significant increases in real estate transfer tax.
42400	Expenditure Detail: AFR amount must equal or exceed PDE FAI System amount. 5130-880, AFR Exp Detail: \$1,793.40 5130-880, PDE FAI System: \$83,622.70	The \$83,622.70 deducted from BEF payment on 6/1/2022 was accrued in 2020-21 AFR. The 2020-21 total for 5130-880 was \$91,671.74. This included \$83,622.70 deduction for Tuition for Orphans for 3 years and \$7,120.01 for a tax assessment refund.
42420	Expenditure Detail: Total current year 2700-513 expenditure varies from prior year by 10%. Correct the data or enter a justification. 2700-513, AFR Exp Detail: \$1,806,238.63 2700-513, PY AFR Amount: \$994,937.27	Students learned remotely for part of the year in 2020-21. In 2021-22 students returned to the classroom for the full year and transportation costs increased. Also, the district added a summer program in 2021-22.
50430	SESS - 2160 Social Work Services: SESS Schedule amounts for Special Education vary from prior year by 40% or more. Correct the data or enter a justification. SESS Schedule 2160: \$100,374.80 Prior Year SESS Schedule 2160: \$45,820.82	District received ESSER Grant funding which it used for increased social and mental health services for students quarantined during the pandemic and returning from remote learning.
50480	SESS - 2700 Student Transportation Services: SESS Schedule amounts for Special Education vary from prior year by 40% or more. Correct the data or enter a justification. SESS Schedule 2700: \$1,527,892.53 Prior Year SESS Schedule 2700: \$1,024,098.08	Students learned remotely for part of the year in 2020-21. In 2021-22 students returned to the classroom for the full year and transportation costs increased. Also, the district added a summer program in 2021-22.
50600	HCB Schedule, Enterprise Fund Total cannot exceed REP report for Object 200, all Functions total reported for all Enterprise Funds. HCBS, Enterprise Fund Total: \$174,658.73 REP, Object 200, Enterprise Fund: \$124,736.00	GASB 68 Pension Valuation Adjustment of \$287,984 credited to account 230. Total of 200 accounts is \$124,736 for REP. HCB only lists expenses for medical insurance accounts, which total \$174,658.73.

LEA : 123466403 Pottstown SD

Printed 12/22/2022 12:12:40 PM

Amounts Expressed in Whole Dollars		<u>General Fund</u> <u>(10)</u>	<u>Student Sponsored</u> <u>Activity Fund</u> <u>(21)</u>	<u>Public Purpose Trust</u> <u>(27)</u>	<u>Other Compt Approved</u> <u>(28)</u>	<u>Athletic / Activity</u> <u>(29)</u>
Assets And Deferred Outflows Of Resources						
Assets						
0100	Cash and Cash Equivalents	16,333,633				127,525
0110	Investments	9,789,425				
0120	Taxes Receivable	2,425,906				
0130	Due From Other Funds	722,971				
0141	Due From Other Governments	4,143				
0142	State Revenue Receivable	4,141,097				
0143	Federal Revenue Receivable	2,640,305				
0145	Other Intergovernmental Revenue Receivable					
0146	Due from Primary Government					
0147	Due from Component Unit					
0150	Other Receivables	60,521				
0170	Inventories					
0180	Prepaid Expenses (Expenditures)	137,825				
0190	Other Current Assets					
Total Assets		\$36,255,826				\$127,525
0910	Deferred Outflows of Resources					
Total Assets And Deferred Outflows Of Resources		\$36,255,826				\$127,525

LEA : 123466403 Pottstown SD

Printed 12/22/2022 12:12:40 PM

Amounts Expressed in Whole Dollars		<u>Capital Reserve (690.</u> <u>1850)</u> <u>(31)</u>	<u>Capital Reserve (1431)</u> <u>(32)</u>	<u>Other Capital Projects</u> <u>Fund</u> <u>(39)</u>	<u>Debt Service</u> <u>(40)</u>	<u>Permanent</u> <u>(90)</u>
Assets And Deferred Outflows Of Resources						
Assets						
0100	Cash and Cash Equivalents			2,210,877		
0110	Investments					
0120	Taxes Receivable					
0130	Due From Other Funds					
0141	Due From Other Governments					
0142	State Revenue Receivable					
0143	Federal Revenue Receivable					
0145	Other Intergovernmental Revenue Receivable					
0146	Due from Primary Government					
0147	Due from Component Unit					
0150	Other Receivables					
0170	Inventories					
0180	Prepaid Expenses (Expenditures)					
0190	Other Current Assets					
Total Assets				\$2,210,877		
0910	Deferred Outflows of Resources					
Total Assets And Deferred Outflows Of Resources				\$2,210,877		

LEA : 123466403 Pottstown SD

Printed 12/22/2022 12:12:40 PM

Amounts Expressed in Whole Dollars		<u>Total Governmental</u>
		<u>Funds</u>
Assets And Deferred Outflows Of Resources		
Assets		
0100	Cash and Cash Equivalents	18,672,035
0110	Investments	9,789,425
0120	Taxes Receivable	2,425,906
0130	Due From Other Funds	722,971
0141	Due From Other Governments	4,143
0142	State Revenue Receivable	4,141,097
0143	Federal Revenue Receivable	2,640,305
0145	Other Intergovernmental Revenue Receivable	
0146	Due from Primary Government	
0147	Due from Component Unit	
0150	Other Receivables	60,521
0170	Inventories	
0180	Prepaid Expenses (Expenditures)	137,825
0190	Other Current Assets	
Total Assets		\$38,594,228
0910	Deferred Outflows of Resources	
Total Assets And Deferred Outflows Of Resources		\$38,594,228

LEA : 123466403 Pottstown SD

Printed 12/22/2022 12:12:40 PM

Amounts Expressed in Whole Dollars	<u>General Fund</u> <u>(10)</u>	<u>Student Sponsored</u> <u>Activity Fund</u> <u>(21)</u>	<u>Public Purpose Trust</u> <u>(27)</u>	<u>Other Compt Approved</u> <u>(28)</u>	<u>Athletic / Activity</u> <u>(29)</u>
Liabilities And Deferred Inflows Of Resources And Fund Balances					
Liabilities					
0400 Due to Other Funds	1,951,352				
0411 Due to Other Governments					
0412 Due to Primary Government					
0413 Due to Component Unit					
0420 Accounts Payable	1,694,152				3,104
0430 Contracts Payable					
0440 Current Portion of Long-Term Debt					
0450 Short-Term Payables					
0461 Accrued Salaries and Benefits	3,928,112				
0462 Payroll Deductions and Withholding	2,928,647				
0480 Unearned Revenues	581,661				
0490 Other Current Liabilities					
Total Liabilities	\$11,083,924				\$3,104
0950 Deferred Inflows of Resources	1,971,834				
Fund Balances					
0810 Nonspendable Fund Balance					
0820 Restricted Fund Balance	32,992				124,421
0830 Committed Fund Balance	13,437,173				
0840 Assigned Fund Balance	1,425,451				
0850 Unassigned Fund Balance	8,304,452				
Total Fund Balances	\$23,200,068				\$124,421
Total Liabilities, Deferred Inflows Of Resources And Fund Balances	\$36,255,826				\$127,525

LEA : 123466403 Pottstown SD

Printed 12/22/2022 12:12:40 PM

Amounts Expressed in Whole Dollars		<u>Capital Reserve (690.</u> <u>1850)</u> <u>(31)</u>	<u>Capital Reserve (1431)</u> <u>(32)</u>	<u>Other Capital Projects</u> <u>Fund</u> <u>(39)</u>	<u>Debt Service</u> <u>(40)</u>	<u>Permanent</u> <u>(90)</u>
Liabilities And Deferred Inflows Of Resources And Fund Balances						
Liabilities						
0400	Due to Other Funds			16,389		
0411	Due to Other Governments					
0412	Due to Primary Government					
0413	Due to Component Unit					
0420	Accounts Payable					
0430	Contracts Payable					
0440	Current Portion of Long-Term Debt					
0450	Short-Term Payables					
0461	Accrued Salaries and Benefits					
0462	Payroll Deductions and Withholding					
0480	Unearned Revenues					
0490	Other Current Liabilities					
Total Liabilities				\$16,389		
0950	Deferred Inflows of Resources					
Fund Balances						
0810	Nonspendable Fund Balance					
0820	Restricted Fund Balance			2,194,488	5,000	
0830	Committed Fund Balance					
0840	Assigned Fund Balance					
0850	Unassigned Fund Balance				(5,000)	
Total Fund Balances				\$2,194,488		
Total Liabilities, Deferred Inflows Of Resources And Fund Balances				\$2,210,877		

LEA : 123466403 Pottstown SD

Printed 12/22/2022 12:12:40 PM

Amounts Expressed in Whole Dollars		<u>Total Governmental</u> <u>Funds</u>
Liabilities And Deferred Inflows Of Resources And Fund Balances		
Liabilities		
0400 Due to Other Funds		1,967,741
0411 Due to Other Governments		
0412 Due to Primary Government		
0413 Due to Component Unit		
0420 Accounts Payable		1,697,256
0430 Contracts Payable		
0440 Current Portion of Long-Term Debt		
0450 Short-Term Payables		
0461 Accrued Salaries and Benefits		3,928,112
0462 Payroll Deductions and Withholding		2,928,647
0480 Unearned Revenues		581,661
0490 Other Current Liabilities		
Total Liabilities		\$11,103,417
0950 Deferred Inflows of Resources		1,971,834
Fund Balances		
0810 Nonspendable Fund Balance		
0820 Restricted Fund Balance		2,356,901
0830 Committed Fund Balance		13,437,173
0840 Assigned Fund Balance		1,425,451
0850 Unassigned Fund Balance		8,299,452
Total Fund Balances		\$25,518,977
Total Liabilities, Deferred Inflows Of Resources And Fund Balances		\$38,594,228

Amounts Expressed in Whole Dollars	<u>General Fund</u> <u>(10)</u>	<u>Student Sponsored</u> <u>Activity Fund</u> <u>(21)</u>	<u>Public Purpose Trust</u> <u>(27)</u>	<u>Other Compt Approved</u> <u>(28)</u>	<u>Athletic / Activity</u> <u>(29)</u>
Revenues					
6000 Revenue from Local Sources	35,966,474				26,170
7000 Revenue from State Sources	31,496,484				
8000 Revenue from Federal Sources	5,792,274				
Total Revenues	\$73,255,232				\$26,170
Expenditures					
1000 Instruction	43,235,709				
2000 Support Services	21,453,963				
3000 Operation of Non-Instructional Services	1,106,939				15,799
4000 Facilities Acquisition, Construction and Improvement Services	756,867				
5110 Debt Service	3,636,591				
5130 Refund of Prior Year Revenues / Receipts	1,793				
5140 Leases	91,659				
Total Expenditures	\$70,283,521				\$15,799
Excess (Deficiency) Of Revenues Over Expenditures	\$2,971,711				\$10,371
Other Financing Sources (Uses)					
9110 Face Value of Bonds Issued					
9120 Proceeds from Refunding of Bonds					
9130 Bond Premiums					
9200 Proceeds from Extended-Term Financing and Leases					
9300 Interfund Transfers - IN	51,993				
9400 Sale of or Compensation for Loss of Fixed Assets					
9710 Transfers from Component Units					
9720 Transfers from Primary Governments					
9910 Other Financing Sources Not Listed in the 9000 Series					
9990 Insurance Recoveries					
5120 Debt Service – Refunded Bonds					
5150 Bond Discounts					
5200 Interfund Transfers – Out					
5300 Transfers Out to Component Units/Primary Governments					
Total Other Financing Sources (Uses)	\$51,993				

LEA : 123466403 Pottstown SD

Printed 12/22/2022 12:12:47 PM

Amounts Expressed in Whole Dollars		<u>Capital Reserve (690.</u> <u>1850)</u> <u>(31)</u>	<u>Capital Reserve (1431)</u> <u>(32)</u>	<u>Other Capital Projects</u> <u>Fund</u> <u>(39)</u>	<u>Debt Service</u> <u>(40)</u>	<u>Permanent</u> <u>(90)</u>
Revenues						
6000	Revenue from Local Sources			2,371		
7000	Revenue from State Sources					
8000	Revenue from Federal Sources					
Total Revenues				\$2,371		
Expenditures						
1000	Instruction					
2000	Support Services				175,488	
3000	Operation of Non-Instructional Services					
4000	Facilities Acquisition, Construction and Improvement Services					
5110	Debt Service				119,868	
5130	Refund of Prior Year Revenues / Receipts					
5140	Leases					
Total Expenditures					\$295,356	
Excess (Deficiency) Of Revenues Over Expenditures				\$2,371	(\$295,356)	
Other Financing Sources (Uses)						
9110	Face Value of Bonds Issued					
9120	Proceeds from Refunding of Bonds				9,640,000	
9130	Bond Premiums				305,356	
9200	Proceeds from Extended-Term Financing and Leases					
9300	Interfund Transfers - IN					
9400	Sale of or Compensation for Loss of Fixed Assets					
9710	Transfers from Component Units					
9720	Transfers from Primary Governments					
9910	Other Financing Sources Not Listed in the 9000 Series					
9990	Insurance Recoveries					
5120	Debt Service – Refunded Bonds				9,650,000	
5150	Bond Discounts					
5200	Interfund Transfers – Out					
5300	Transfers Out to Component Units/Primary Governments					
Total Other Financing Sources (Uses)					\$295,356	

Amounts Expressed in Whole Dollars		<u>Total Governmental Funds</u>
Revenues		
6000	Revenue from Local Sources	35,995,015
7000	Revenue from State Sources	31,496,484
8000	Revenue from Federal Sources	5,792,274
Total Revenues		\$73,283,773
Expenditures		
1000	Instruction	43,235,709
2000	Support Services	21,629,451
3000	Operation of Non-Instructional Services	1,122,738
4000	Facilities Acquisition, Construction and Improvement Services	756,867
5110	Debt Service	3,756,459
5130	Refund of Prior Year Revenues / Receipts	1,793
5140	Leases	91,659
Total Expenditures		\$70,594,676
Excess (Deficiency) Of Revenues Over Expenditures		\$2,689,097
Other Financing Sources (Uses)		
9110	Face Value of Bonds Issued	
9120	Proceeds from Refunding of Bonds	9,640,000
9130	Bond Premiums	305,356
9200	Proceeds from Extended-Term Financing and Leases	
9300	Interfund Transfers - IN	51,993
9400	Sale of or Compensation for Loss of Fixed Assets	
9710	Transfers from Component Units	
9720	Transfers from Primary Governments	
9910	Other Financing Sources Not Listed in the 9000 Series	
9990	Insurance Recoveries	
5120	Debt Service – Refunded Bonds	9,650,000
5150	Bond Discounts	
5200	Interfund Transfers – Out	
5300	Transfers Out to Component Units/Primary Governments	
Total Other Financing Sources (Uses)		\$347,349

Amounts Expressed in Whole Dollars		<u>General Fund</u> <u>(10)</u>	<u>Student Sponsored</u> <u>Activity Fund</u> <u>(21)</u>	<u>Public Purpose Trust</u> <u>(27)</u>	<u>Other Compt Approved</u> <u>(28)</u>	<u>Athletic / Activity</u> <u>(29)</u>
Special And Extraordinary Items						
9920 Special Items – Gains						
9930 Extraordinary Items – Gains						
5520 Special Items – Losses						
5530 Extraordinary Items – Losses						
Net Change In Fund Balances		\$3,023,704				\$10,371
Fund Balance						
0001 Fund Balance - Beginning of Fiscal Year		20,176,366				114,051
Fund Balance - End Of Year		\$23,200,070				\$124,422

Amounts Expressed in Whole Dollars		<u>Capital Reserve (690.</u> <u>1850)</u> <u>(31)</u>	<u>Capital Reserve (1431)</u> <u>(32)</u>	<u>Other Capital Projects</u> <u>Fund</u> <u>(39)</u>	<u>Debt Service</u> <u>(40)</u>	<u>Permanent</u> <u>(90)</u>
Special And Extraordinary Items						
9920	Special Items – Gains					
9930	Extraordinary Items – Gains					
5520	Special Items – Losses					
5530	Extraordinary Items – Losses					
Net Change In Fund Balances				\$2,371		
Fund Balance						
0001	Fund Balance - Beginning of Fiscal Year			2,192,117		
Fund Balance - End Of Year				\$2,194,488		

Amounts Expressed in Whole Dollars		<u>Total Governmental Funds</u>
Special And Extraordinary Items		
9920	Special Items – Gains	
9930	Extraordinary Items – Gains	
5520	Special Items – Losses	
5530	Extraordinary Items – Losses	
Net Change In Fund Balances		\$3,036,446
Fund Balance		
0001	Fund Balance - Beginning of Fiscal Year	22,482,534
Fund Balance - End Of Year		\$25,518,980

LEA : 123466403 Pottstown SD

Printed 12/22/2022 12:12:48 PM

Amounts Expressed in Whole Dollars		<u>Food Service</u> <u>(51)</u>	<u>Child Care</u> <u>Operations</u> <u>(52)</u>	<u>Other Enterprise</u> <u>(58)</u>	<u>TOTAL</u>	<u>Internal Service</u> <u>(60)</u>
Assets And Deferred Outflows Of Resources						
Current Assets						
0100	Cash and Cash Equivalents	1,332,512			1,332,512	
0110	Investments					3,631,276
0130	Due From Other Funds					1,532,920
0141	Due From Other Governments					
0142	State Revenue Receivable	1,170			1,170	
0143	Federal Revenue Receivable	37,634			37,634	
0146	Due from Primary Government					
0147	Due from Component Unit					
0150	Other Receivables	84			84	
0170	Inventories	28,000			28,000	
0180	Prepaid Expenses (Expenditures)					131,000
0190	Other Current Assets					
Total Current Assets		\$1,399,400			\$1,399,400	\$5,295,196
Noncurrent Assets						
0211	Land					
0212	Site Improvements (Net)					
0220	Buildings and Building Improvements (Net)					
0230	Machinery, Equipment and Furniture (Net)	185,545			185,545	
0250	Construction in Progress					
0260	Long Term Prepayments					
0290	Other Noncurrent Assets					
Total Noncurrent Assets		\$185,545			\$185,545	
0910	Deferred Outflows of Resources	344,202			344,202	
Total Assets And Deferred Outflows Of Resources		\$1,929,147			\$1,929,147	\$5,295,196

Amounts Expressed in Whole Dollars	<u>Food Service</u> <u>(51)</u>	<u>Child Care</u> <u>Operations</u> <u>(52)</u>	<u>Other Enterprise</u> <u>(58)</u>	<u>TOTAL</u>	<u>Internal Service</u> <u>(60)</u>
Liabilities And Deferred Inflows Of Resources And Net Position					
Current Liabilities					
0400 Due to Other Funds	288,150			288,150	
0411 Due to Other Governments					
0413 Due to Component Unit					
0420 Accounts Payable	29,747			29,747	
0430 Contracts Payable					
0440 Current Portion of Long-Term Debt					
0450 Short-Term Payables					
0461 Accrued Salaries and Benefits	34,427			34,427	
0462 Payroll Deductions and Withholding					
0480 Unearned Revenues	1,017			1,017	
0490 Other Current Liabilities	3,743			3,743	
Total Current Liabilities	\$357,084			\$357,084	
Noncurrent Liabilities					
0510 Bonds Payable					
0520 Extended-Term Financing Agreements Payable					
0530 Lease Obligations					
0540 Accumulated Compensated Absences	24,578			24,578	
0550 Authority Lease Obligations					
0560 Other Post-Employment Benefits (OPEB)	235,984			235,984	
0570 Net Pension Liability	830,862			830,862	
0599 Other Noncurrent Liabilities					
Total Noncurrent Liabilities	\$1,091,424			\$1,091,424	
Total Liabilities	\$1,448,508			\$1,448,508	
0950 Deferred Inflows of Resources	833,286			833,286	
Net Position					
0791 Net Investment in Capital Assets	185,545			185,545	
0008 Restricted Net Position (0792 – 0798)					
0799 Unrestricted Net Position	(538,192)			(538,192)	5,295,196
Total Net Position	(\$352,647)			(\$352,647)	\$5,295,196
Total Liabilities And Deferred Inflows Of Resources And Net Position	\$1,929,147			\$1,929,147	\$5,295,196

Amounts Expressed in Whole Dollars	<u>Food Service</u> <u>(51)</u>	<u>Child Care Operations</u> <u>(52)</u>	<u>Other Enterprise</u> <u>(58)</u>	<u>TOTAL</u>	<u>Internal Service</u> <u>(60)</u>
Operating Revenues					
6600 Food Service Revenue	62,929			62,929	
0071 Charges for Services					6,394,074
0072 Other Operating Revenue					
Total Operating Revenues	\$62,929			\$62,929	\$6,394,074
Operating Expenses					
100 Personnel Services – Salaries	564,602			564,602	
200 Personnel Services – Employee Benefits	124,736			124,736	5,842,109
300 Purchased Professional and Technical Services	33,993			33,993	
400 Purchased Property Services	8,997			8,997	
500 Other Purchased Services	1,452			1,452	
600 Supplies	1,174,156			1,174,156	
740 Depreciation	20,184			20,184	
810 Dues and Fees	1,730			1,730	250,063
880 Refunds of Prior Years' Receipts					
890 Miscellaneous Expenditures	540			540	
Total Operating Expenses	\$1,930,390			\$1,930,390	\$6,092,172
Operating Income (Loss)	(\$1,867,461)			(\$1,867,461)	\$301,902
Non Operating Revenues (Expenses)					
6500 Earnings on Investments	1,181			1,181	
6920 Contributions and Donations from Private Sources					
6930 Gains or Losses on Sale of Fixed Assets					
6991 Refunds of a Prior Year Expenditure					
7000 Revenue from State Sources	181,625			181,625	
8000 Revenue from Federal Sources	2,383,213			2,383,213	
9990 Insurance Recoveries					
820 Claims and Judgments Against the LEA					
830 Interest					
TOTAL Non Operating Revenues (Expenses)	\$2,566,019			\$2,566,019	
Income (Loss) Before Contributions And Transfers	\$698,558			\$698,558	\$301,902

Amounts Expressed in Whole Dollars	<u>Food Service</u> <u>(51)</u>	<u>Child Care Operations</u> <u>(52)</u>	<u>Other Enterprise</u> <u>(58)</u>	<u>TOTAL</u>	<u>Internal Service</u> <u>(60)</u>
Contributions, Transfers, and Special and Extraordinary Items					
5200 Interfund Transfers – Out	51,993			51,993	
5300 Transfers Out to Component Units/Primary Governments					
5520 Special Items – Losses					
5530 Extraordinary Items – Losses					
9300 Interfund Transfers - IN					
9500 Capital Contributions					
9700 Transfers IN From Component Units/Primary Governments					
9920 Special Items – Gains					
9930 Extraordinary Items – Gains					
Change In Net Position	\$646,565			\$646,565	\$301,902
0002 Net Position - Beginning of Fiscal Year	(999,212)			(999,212)	4,993,294
0003 Accounting Changes / Residual Equity Transfers					
Net Position - End Of Year	(\$352,647)			(\$352,647)	\$5,295,196

LEA : 123466403 Pottstown SD

Printed 12/22/2022 12:12:57 PM

Amounts Expressed in Whole Dollars		<u>Food Service</u> <u>(51)</u>	<u>Child Care Operations</u> <u>(52)</u>	<u>Other Enterprise</u> <u>(58)</u>	<u>TOTAL</u>	<u>Internal Service(60)</u>
Cash Flows From Operating Activities						
0011	Cash Receipts From Users	68,515			68,515	6,394,074
0012	Cash Receipts From Assessments Made to Other Funds					
0013	Cash Receipts From Earnings on Investments					
0014	Cash Receipts From Other Operating Revenue					
0015	Cash Payments To Employees For Services	958,144			958,144	
0016	Cash Payments For Insurance Claims					6,394,074
0017	Cash Payments To Suppliers For Goods and Services	1,023,313			1,023,313	
0018	Cash Payments For Other Operating Expenses					
Net Cash Provided By (Used For) Operating Activities		(\$1,912,942)			(\$1,912,942)	\$0
Cash Flows From Non-Capital Financing Activities						
0021	Receipts From Local Sources - 6000					
0022	Receipts From State Sources - 7000	182,173			182,173	
0023	Receipts From Federal Sources -8000	2,240,240			2,240,240	
0024	Notes and Loans Received (Repaid)					
0025	Interest Paid on Notes/Loans - 5100-830					
0026	Operating Transfers In (Out)/Residual Equity Trans	(51,993)			(51,993)	
0027	Operating Transfers In (Out) Primary Government / Comp Unit					
0028	Receipts From Refund of Prior Year Expenditures - 6991					
0029	Special and Extraordinary Gains (losses)					
0030	Receipts from Insurance Recoveries -9990					
Net Cash Prov By (Used for) Non-Capital Financing Activities		\$2,370,420			\$2,370,420	
Cash Flows From Capital and Related Financing Activities						
0031	Payments For Fac Acq, Const, and Imp - 4000	143,526			143,526	
0032	Gain / (Loss) on Sale of Fixed Assets - 6930					
0033	Proceeds From Extended Term Financing - 9200					
0034	Principal Paid on Financing Agreements					
0035	Interest Paid on Financing Agreements - 5100-830					
0036	(Inc) Dec in Contributed Capital					
Net Cash Prov By (Used for) Capital and Related Financing Activities		\$143,526			\$143,526	
Cash Flows From Investing Activities						
0041	Earnings on Investments - 6500	1,181			1,181	
0042	Purchase of Inv Securities / Deposits to Inv Pools					
0043	Receipts From Investment Pool Withdrawals					
0044	Proceeds from Sale and Maturity of Inv Securities					

LEA : 123466403 Pottstown SD

Printed 12/22/2022 12:12:57 PM

0045 Loans Received (Paid)

Net Cash Prov By (Used for) Investing Activities	\$1,181	\$1,181
--	---------	---------

LEA : 123466403 Pottstown SD

Printed 12/22/2022 12:12:57 PM

	<u>Food Service</u> <u>(51)</u>	<u>Child Care Operations</u> <u>(52)</u>	<u>Other Enterprise</u> <u>(58)</u>	<u>TOTAL</u>	<u>Internal Service</u> <u>(60)</u>
Net Increase (Decrease) in Cash Flows	602,185			602,185	
0004 Cash and Cash Equivalents Beginning of Year					
Cash and Cash Equivalents at Year End	\$602,185			\$602,185	
<hr/>					
Reconciliation of Operating Income (Loss) To Net Cash Provided by (Used For) Operating Activities					
0005 Operating Income (Loss) per REP	(1,867,461)			(1,867,461)	301,902
Adjustments					
0051 Depreciation and Net Amortization	20,184			20,184	
0052 Provision for Uncollectible Accounts					
0053 Other Adjustments	148,901			148,901	
Effect of Changes in Assets, Liabilities, Deferred Outflows and Deferred Inflows					
0054 (Inc) Dec In Accounts Receivable (0120-0150)					
0055 Advances to Other Funds (0160)					
0056 (Inc) Dec in Inventories (0170)	(3,253)			(3,253)	
0057 (Inc) Dec in Prepaid Expenses (0180)	33,190			33,190	
0058 (Inc) Dec in Other Current or Noncurrent Assets	27,651			27,651	(301,902)
0064 Deferred Outflows (0910)	76,559			76,559	
0059 Inc (Dec) in Accounts Payable (0400-0450)	18,717			18,717	
0060 Inc (Dec) in Accrued Salaries/Benefits (0461)	(2,583)			(2,583)	
0065 Inc (Dec) in Net Pension Liabilities (0570)	(1,084,653)			(1,084,653)	
0066 Inc (Dec) in Other Postemp Benefit Oblig (0560)	(2,006)			(2,006)	
0061 Inc (Dec) in Payroll Deductions/Withholding (0462)					
0062 Inc (Dec) in Unearned Revenue (0480)	751			751	
0063 Inc (Dec) in Other Current or Noncurrent Liabilities	3,442			3,442	
0067 Deferred Inflows (0950)	717,619			717,619	
Total Adjustments	(\$45,481)			(\$45,481)	(\$301,902)
Cash Provided By (Used for) Total	(\$1,912,942)			(\$1,912,942)	

COMBINED STATEMENT OF CASH FLOWS
SCHEDULE OF NONCASH INVESTING, CAPITAL, AND FINANCING ACTIVITIES

Explanation of Transaction and Balance Sheet Effect	Amount
Total	

LEA : 123466403 Pottstown SD

Printed 12/22/2022 12:12:58 PM

Amounts Expressed in Whole Dollars		<u>Private Purpose Trust</u> <u>(71)</u>	<u>Investment Trust</u> <u>(72)</u>	<u>Pension Trust</u> <u>(73)</u>	<u>Student Activity Custodial</u> <u>(81)</u>
Assets And Deferred Outflows Of Resources					
Assets					
0100	Cash and Cash Equivalents	157,147			
0110	Investments				
0130	Due From Other Funds				
0140	Due from Other Governments, Primary Government and Component Units				
0150	Other Receivables				
0170	Inventories				
0180	Prepaid Expenses (Expenditures)				
0190	Other Current Assets				
0220	Buildings and Building Improvements (Net)				
0230	Machinery, Equipment and Furniture (Net)				
Total Assets		\$157,147			
0910	Deferred Outflows of Resources				
Total Assets And Deferred Outflows Of Resources		\$157,147			

LEA : 123466403 Pottstown SD

Printed 12/22/2022 12:12:58 PM

Amounts Expressed in Whole Dollars		<u>Other Custodial</u> <u>(89)</u>	<u>Fiduciary Component Units</u> <u>(98)</u>	<u>Total Fiduciary Funds</u>
Assets And Deferred Outflows Of Resources				
Assets				
0100	Cash and Cash Equivalents			157,147
0110	Investments			
0130	Due From Other Funds			
0140	Due from Other Governments, Primary Government and Component Units			
0150	Other Receivables			
0170	Inventories			
0180	Prepaid Expenses (Expenditures)			
0190	Other Current Assets			
0220	Buildings and Building Improvements (Net)			
0230	Machinery, Equipment and Furniture (Net)			
Total Assets				\$157,147
0910	Deferred Outflows of Resources			
Total Assets And Deferred Outflows Of Resources				\$157,147

LEA : 123466403 Pottstown SD

Printed 12/22/2022 12:12:58 PM

Amounts Expressed in Whole Dollars	<u>Private Purpose Trust</u> <u>(71)</u>	<u>Investment Trust</u> <u>(72)</u>	<u>Pension Trust</u> <u>(73)</u>	<u>Student Activity Custodial</u> <u>(81)</u>
Liabilities, Deferred Inflows Of Resources And Net Position				
Liabilities				
0400 Due to Other Funds				
0410 Due to Other Governments, Primary Government and Component Units				
0420 Accounts Payable				
0430 Contracts Payable				
0450 Short-Term Payables				
0460 Payroll Accruals and Withholdings				
0480 Unearned Revenues				
0490 Other Current Liabilities				
Total Liabilities				
0950 Deferred Inflows of Resources				
Net Position				
0791 Net Investment in Capital Assets				
0009 Restricted Net Position (0792 – 0798)	446,705			
0799 Unrestricted Net Position	(289,558)			
Total Net Position				
Total Liabilities, Deferred Inflows Of Resources And Net Position				

LEA : 123466403 Pottstown SD

Printed 12/22/2022 12:12:58 PM

Amounts Expressed in Whole Dollars		<u>Other Custodial</u>	<u>Fiduciary Component Units</u>	<u>Total Fiduciary Funds</u>
		<u>(89)</u>	<u>(98)</u>	
Liabilities, Deferred Inflows Of Resources And Net Position				
Liabilities				
0400	Due to Other Funds			
0410	Due to Other Governments, Primary Government and Component Units			
0420	Accounts Payable			
0430	Contracts Payable			
0450	Short-Term Payables			
0460	Payroll Accruals and Withholdings			
0480	Unearned Revenues			
0490	Other Current Liabilities			
Total Liabilities				
0950	Deferred Inflows of Resources			
Net Position				
0791	Net Investment in Capital Assets			
0009	Restricted Net Position (0792 – 0798)			446,705
0799	Unrestricted Net Position			(289,558)
Total Net Position				\$157,147
Total Liabilities, Deferred Inflows Of Resources And Net Position				\$157,147

LEA : 123466403 Pottstown SD

Printed 12/22/2022 12:12:59 PM

Amounts Expressed in Whole Dollars	<u>Private Purpose Trust</u> <u>(71)</u>	<u>Investment Trust</u> <u>(72)</u>	<u>Pension Trust</u> <u>(73)</u>	<u>Student Activity</u> <u>Custodial</u> <u>(81)</u>	<u>Other Custodial</u> <u>(89)</u>	<u>Fiduciary Component</u> <u>Units</u> <u>(98)</u>
Additions						
0091 Gifts and Contributions	45,852					
0095 Net Investment Earnings	215					
0092 Other Additions						
Deductions						
0093 Scholarships Awarded						
0094 Other Deductions	17,143					
Change In Net Position	\$28,924					
0006 Net Position – Beginning of Fiscal Year	128,223					
0007 Net Position Held in Trust for Pension Benefits						
Net Position - End of Fiscal Year	\$157,147					

LEA : 123466403 Pottstown SD

Printed 12/22/2022 12:12:59 PM

Amounts Expressed in Whole Dollars		<u>Total Fiduciary</u>
		<u>Funds</u>
Additions		
0091	Gifts and Contributions	45,852
0095	Net Investment Earnings	215
0092	Other Additions	
Deductions		
0093	Scholarships Awarded	
0094	Other Deductions	17,143
Change In Net Position		\$28,924
0006	Net Position – Beginning of Fiscal Year	128,223
0007	Net Position Held in Trust for Pension Benefits	
Net Position - End of Fiscal Year		\$157,147

	Revenue Reported In Current Year	Current Year Tax Accrual	Prior Year Tax Accrual	Taxes Collected In Current Year
Revenue from Local Sources				
6111 Current Real Estate Taxes	29,076,269.58			29,076,269.58
6112 Interim Real Estate Taxes	58,415.98			58,415.98
6113 Public Utility Realty Taxes	33,134.43			33,134.43
6114 Payments in Lieu of Current Taxes - State / Local	29,648.97			29,648.97
6120 Current Per Capita Taxes, Section 679	30,417.03			30,417.03
6141 Current Act 511 Per Capita Taxes	30,417.02			30,417.02
6143 Current Act 511 Local Services Taxes	40,861.10			40,861.10
6151 Current Act 511 Earned Income Taxes	2,537,524.03			2,537,524.03
6152 Current Act 511 Occupation Taxes	178,260.97			178,260.97
6153 Current Act 511 Real Estate Transfer Taxes	819,899.44			819,899.44
6411 Delinquent Real Estate Taxes	1,176,074.34			1,176,074.34
6420 Delinquent Per Capita Taxes, Section 679	28,865.95			28,865.95
6440 Delinquent Local Enabling Taxes - Flat Rate Assessments	28,865.95			28,865.95
6452 Delinquent Act 511 Occupation Taxes	245,324.86			245,324.86
6500 Earnings on Investments	21,534.53			
6700 Revenues from LEA Activities	18,601.91			
6831 Federal Revenue Received from Other Pennsylvania Public LEAs	4,642.00			
6832 Federal IDEA Revenue Received as Pass Through	820,549.00			
6910 Rentals	178,335.00			
6920 Contributions and Donations from Private Sources	61,759.56			
6944 Receipts from Other LEAs in Pennsylvania - Education	4,273.98			
6991 Refunds of a Prior Year Expenditure	160,817.27			
6992 Energy Efficiency Revenues and Incentives	16,389.16			
6999 Other Revenues Not Specified Above	365,592.26			
TOTAL Revenue from Local Sources	\$35,966,474.32			\$34,313,979.65

	Revenue Reported In Current Year			
<u>Revenue from State Sources</u>				
7111 Basic Education Funding-Formula	13,622,350.62			
7112 Basic Education Funding-Social Security	1,091,260.61			
7160 Tuition for Orphans Subsidy	84,045.63			
7220 Vocational Education	511,922.00			
7271 Special Education funds for School-Aged Pupils	2,663,199.52			
7292 Pre-K Counts	2,467,500.00			
7311 Pupil Transportation Subsidy	261,485.66			
7312 Nonpublic and Charter School Pupil Transportation Subsidy	7,315.00			
7320 Rental and Sinking Fund Payments / Building Reimbursement Subsidy	1,104,623.11			
7330 Health Services (Medical, Dental, Nurse, Act 25)	58,906.01			
7340 State Property Tax Reduction Allocation	1,624,782.00			
7361 School Safety and Security Grants	234,492.15			
7505 Ready to Learn Block Grant	1,059,007.00			
7509 Supplemental Equipment Grants	212,927.96			
7820 State Share of Retirement Contributions	6,492,666.78			
TOTAL Revenue from State Sources	\$31,496,484.05			

	Revenue Reported In Current Year			
<u>Revenue from Federal Sources</u>				
8514 NCLB, Title I - Improving the Academic Achievement of the Disadvantaged	1,438,070.00			
8515 NCLB, Title II - Preparing, Training and Recruiting High Quality Teachers and Principals	170,397.00			
8517 NCLB, Title IV - 21St Century Schools	483,427.28			
8521 Vocational Education - Operating Expenditures	72,632.00			
8690 Other Restricted Federal Grants-in-Aid Through the Commonwealth of PA	111,949.57			
8742 Governor's Emergency Education Relief Fund (GEER)	137,300.17			
8743 ESSER II - Elementary and Secondary School Emergency Relief Fund	3,054,443.96			
8744 ARP ESSER - Elementary and Secondary School Emergency Relief Fund	14,072.32			
8747 ARP ECF - Emergency Connectivity Fund	135,339.60			
8749 Other CARES Act Funding	48,167.88			
8755 ARP ESSER Emergency Relief for Other Educational Entities	47,714.41			
8820 Medical Assistance Reimbursement for Administrative Claiming (Quarterly) Program	78,759.73			
TOTAL Revenue from Federal Sources	\$5,792,273.92			

	Revenue Reported In Current Year	
<u>Other Financing Sources</u>		
9350 Enterprise Fund Transfers	51,992.87	
TOTAL Other Financing Sources	\$51,992.87	
TOTAL FROM ALL SOURCES	\$73,307,225.16	\$34,313,979.65

LEA : 123466403 Pottstown SD

Printed 12/22/2022 12:13:01 PM

	<u>General Fund (10)</u>	<u>Student Sponsored Activity Fund (21)</u>	<u>Public Purpose Trust (27)</u>	<u>Other Compt Approved (28)</u>	<u>Athletic / Activity (29)</u>	<u>Capital Reserve (690, 1850) (31)</u>
6000 Revenue from Local Sources						
6111 Current Real Estate Taxes	29,076,269.58					
6112 Interim Real Estate Taxes	58,415.98					
6113 Public Utility Realty Taxes	33,134.43					
6114 Payments in Lieu of Current Taxes - State / Local	29,648.97					
6120 Current Per Capita Taxes, Section 679	30,417.03					
6141 Current Act 511 Per Capita Taxes	30,417.02					
6143 Current Act 511 Local Services Taxes	40,861.10					
6151 Current Act 511 Earned Income Taxes	2,537,524.03					
6152 Current Act 511 Occupation Taxes	178,260.97					
6153 Current Act 511 Real Estate Transfer Taxes	819,899.44					
6411 Delinquent Real Estate Taxes	1,176,074.34					
6420 Delinquent Per Capita Taxes, Section 679	28,865.95					
6440 Delinquent Local Enabling Taxes - Flat Rate Assessments	28,865.95					
6452 Delinquent Act 511 Occupation Taxes	245,324.86					
6500 Earnings on Investments	21,534.53				102.45	
6700 Revenues from LEA Activities	18,601.91				26,067.06	
6831 Federal Revenue Received from Other Pennsylvania Public LEAs	4,642.00					
6832 Federal IDEA Revenue Received as Pass Through	820,549.00					
6910 Rentals	178,335.00					
6920 Contributions and Donations from Private Sources	61,759.56					
6944 Receipts from Other LEAs in Pennsylvania - Education	4,273.98					
6991 Refunds of a Prior Year Expenditure	160,817.27					
6992 Energy Efficiency Revenues and Incentives	16,389.16					
6999 Other Revenues Not Specified Above	365,592.26					
6000 Total Revenue from Local Sources	\$35,966,474.32				\$26,169.51	
7000 Revenue from State Sources						
7111 Basic Education Funding-Formula	13,622,350.62					
7112 Basic Education Funding-Social Security	1,091,260.61					
7160 Tuition for Orphans Subsidy	84,045.63					
7220 Vocational Education	511,922.00					
7271 Special Education funds for School-Aged Pupils	2,663,199.52					
7292 Pre-K Counts	2,467,500.00					
7311 Pupil Transportation Subsidy	261,485.66					
7312 Nonpublic and Charter School Pupil Transportation Subsidy	7,315.00					
7320 Rental and Sinking Fund Payments / Building Reimbursement Subsidy	1,104,623.11					

LEA : 123466403 Pottstown SD

Printed 12/22/2022 12:13:01 PM

	<u>Capital Reserve</u> <u>(1431) (32)</u>	<u>Other Capital</u> <u>Projects Fund (39)</u>	<u>Debt Service (40)</u>	<u>Permanent (90)</u>	<u>Total</u>
6000 Revenue from Local Sources					
6111 Current Real Estate Taxes					29,076,269.58
6112 Interim Real Estate Taxes					58,415.98
6113 Public Utility Realty Taxes					33,134.43
6114 Payments in Lieu of Current Taxes - State / Local					29,648.97
6120 Current Per Capita Taxes, Section 679					30,417.03
6141 Current Act 511 Per Capita Taxes					30,417.02
6143 Current Act 511 Local Services Taxes					40,861.10
6151 Current Act 511 Earned Income Taxes					2,537,524.03
6152 Current Act 511 Occupation Taxes					178,260.97
6153 Current Act 511 Real Estate Transfer Taxes					819,899.44
6411 Delinquent Real Estate Taxes					1,176,074.34
6420 Delinquent Per Capita Taxes, Section 679					28,865.95
6440 Delinquent Local Enabling Taxes - Flat Rate Assessments					28,865.95
6452 Delinquent Act 511 Occupation Taxes					245,324.86
6500 Earnings on Investments		2,371.00			24,007.98
6700 Revenues from LEA Activities					44,668.97
6831 Federal Revenue Received from Other Pennsylvania Public LEAs					4,642.00
6832 Federal IDEA Revenue Received as Pass Through					820,549.00
6910 Rentals					178,335.00
6920 Contributions and Donations from Private Sources					61,759.56
6944 Receipts from Other LEAs in Pennsylvania - Education					4,273.98
6991 Refunds of a Prior Year Expenditure					160,817.27
6992 Energy Efficiency Revenues and Incentives					16,389.16
6999 Other Revenues Not Specified Above					365,592.26
6000 Total Revenue from Local Sources		\$2,371.00			\$35,995,014.83
7000 Revenue from State Sources					
7111 Basic Education Funding-Formula					13,622,350.62
7112 Basic Education Funding-Social Security					1,091,260.61
7160 Tuition for Orphans Subsidy					84,045.63
7220 Vocational Education					511,922.00
7271 Special Education funds for School-Aged Pupils					2,663,199.52
7292 Pre-K Counts					2,467,500.00
7311 Pupil Transportation Subsidy					261,485.66
7312 Nonpublic and Charter School Pupil Transportation Subsidy					7,315.00
7320 Rental and Sinking Fund Payments / Building Reimbursement Subsidy					1,104,623.11

LEA : 123466403 Pottstown SD

Printed 12/22/2022 12:13:01 PM

	<u>General Fund (10)</u>	<u>Student Sponsored Activity Fund (21)</u>	<u>Public Purpose Trust (27)</u>	<u>Other Compt Approved (28)</u>	<u>Athletic / Activity (29)</u>	<u>Capital Reserve (690.1850) (31)</u>
7000 Revenue from State Sources						
7330 Health Services (Medical, Dental, Nurse, Act 25)	58,906.01					
7340 State Property Tax Reduction Allocation	1,624,782.00					
7361 School Safety and Security Grants	234,492.15					
7505 Ready to Learn Block Grant	1,059,007.00					
7509 Supplemental Equipment Grants	212,927.96					
7820 State Share of Retirement Contributions	6,492,666.78					
7000 Total Revenue from State Sources	\$31,496,484.05					
8000 Revenue from Federal Sources						
8514 NCLB, Title I - Improving the Academic Achievement of the Disadvantaged	1,438,070.00					
8515 NCLB, Title II - Preparing, Training and Recruiting High Quality Teachers and Principals	170,397.00					
8517 NCLB, Title IV - 21st Century Schools	483,427.28					
8521 Vocational Education - Operating Expenditures	72,632.00					
8690 Other Restricted Federal Grants-in-Aid Through the Commonwealth of PA	111,949.57					
8742 Governor's Emergency Education Relief Fund (GEER)	137,300.17					
8743 ESSER II - Elementary and Secondary School Emergency Relief Fund	3,054,443.96					
8744 ARP ESSER - Elementary and Secondary School Emergency Relief Fund	14,072.32					
8747 ARP ECF - Emergency Connectivity Fund	135,339.60					
8749 Other CARES Act Funding	48,167.88					
8755 ARP ESSER Emergency Relief for Other Educational Entities	47,714.41					
8820 Medical Assistance Reimbursement for Administrative Claiming (Quarterly) Program	78,759.73					
8000 Total Revenue from Federal Sources	\$5,792,273.92					
9000 Other Financing Sources						
9120 Proceeds from Refunding of Bonds						
9130 Bond Premiums						
9350 Enterprise Fund Transfers	51,992.87					
9000 Total Other Financing Sources	\$51,992.87					
Total From All Sources	\$73,307,225.16				\$26,169.51	

LEA : 123466403 Pottstown SD

Printed 12/22/2022 12:13:01 PM

	<u>Capital Reserve</u> <u>(1431) (32)</u>	<u>Other Capital</u> <u>Projects Fund (39)</u>	<u>Debt Service (40)</u>	<u>Permanent (90)</u>	<u>Total</u>
7000 Revenue from State Sources					
7330 Health Services (Medical, Dental, Nurse, Act 25)					58,906.01
7340 State Property Tax Reduction Allocation					1,624,782.00
7361 School Safety and Security Grants					234,492.15
7505 Ready to Learn Block Grant					1,059,007.00
7509 Supplemental Equipment Grants					212,927.96
7820 State Share of Retirement Contributions					6,492,666.78
7000 Total Revenue from State Sources					\$31,496,484.05
8000 Revenue from Federal Sources					
8514 NCLB, Title I - Improving the Academic Achievement of the Disadvantaged					1,438,070.00
8515 NCLB, Title II - Preparing, Training and Recruiting High Quality Teachers and Principals					170,397.00
8517 NCLB, Title IV - 21st Century Schools					483,427.28
8521 Vocational Education - Operating Expenditures					72,632.00
8690 Other Restricted Federal Grants-in-Aid Through the Commonwealth of PA					111,949.57
8742 Governor's Emergency Education Relief Fund (GEER)					137,300.17
8743 ESSER II - Elementary and Secondary School Emergency Relief Fund					3,054,443.96
8744 ARP ESSER - Elementary and Secondary School Emergency Relief Fund					14,072.32
8747 ARP ECF - Emergency Connectivity Fund					135,339.60
8749 Other CARES Act Funding					48,167.88
8755 ARP ESSER Emergency Relief for Other Educational Entities					47,714.41
8820 Medical Assistance Reimbursement for Administrative Claiming (Quarterly) Program					78,759.73
8000 Total Revenue from Federal Sources					\$5,792,273.92
9000 Other Financing Sources					
9120 Proceeds from Refunding of Bonds			9,640,000.00		9,640,000.00
9130 Bond Premiums			305,355.80		305,355.80
9350 Enterprise Fund Transfers					51,992.87
9000 Total Other Financing Sources			\$9,945,355.80		\$9,997,348.67
Total From All Sources		\$2,371.00	\$9,945,355.80		\$83,281,121.47

LEA : 123466403 Pottstown SD

Printed 12/22/2022 12:13:03 PM

	<u>General Fund (10)</u>	<u>Student Sponsored Activity Fund (21)</u>	<u>Public Purpose Trust (27)</u>	<u>Other Compt Approved (28)</u>	<u>Athletic / Activity (29)</u>	<u>Capital Reserve (690. 1850) (31)</u>
Revenue from Local Sources	35,966,474.32				26,169.51	
Revenue from State Sources	31,496,484.05					
Revenue from Federal Sources	5,792,273.92					
Other Financing Sources	51,992.87					
Total From All Sources	\$73,307,225.16				\$26,169.51	

LEA : 123466403 Pottstown SD

Printed 12/22/2022 12:13:03 PM

	<u>Capital Reserve (1431)</u> <u>(32)</u>	<u>Other Capital Projects</u> <u>Fund (39)</u>	<u>Debt Service (40)</u>	<u>Permanent (90)</u>	<u>Total</u>
Revenue from Local Sources		2,371.00			35,995,014.83
Revenue from State Sources					31,496,484.05
Revenue from Federal Sources					5,792,273.92
Other Financing Sources			9,945,355.80		9,997,348.67
Total From All Sources		\$2,371.00	\$9,945,355.80		\$83,281,121.47

LEA : 123466403 Pottstown SD

Printed 12/22/2022 12:13:06 PM

General Fund (10)

1000 Instruction		Total
100 <u>Personnel Services – Salaries</u>		
100 Personnel Services – Salaries		18,760,028.82
Total Personnel Services – Salaries		\$18,760,028.82
200 <u>Personnel Services – Employee Benefits</u>		
210 Group Insurance – Contracted Provider		4,172,251.91
220 Social Security Contributions		1,371,189.43
230 PSERS Retirement Contributions		6,497,982.00
250 Unemployment Compensation		2,258.20
260 Workers' Compensation		122,334.86
299 All Other Employee Benefits		82,317.00
Total Personnel Services – Employee Benefits		\$12,248,333.40
300 <u>Purchased Professional and Technical Services</u>		
322 Professional Educational Services – Ius		1,492,718.56
323 Professional Educational Services – Other Educational Agencies		33,257.99
329 Professional Educational Services – Other		500,288.20
330 Other Professional Services		135,896.21
390 Other Purchased Professional and Technical Services		269,944.29
Total Purchased Professional and Technical Services		\$2,432,105.25
400 <u>Purchased Property Services</u>		
410 Cleaning Services		1,412.73
430 Repairs and Maintenance Services		6,549.73
440 Rentals		72,682.26
Total Purchased Property Services		\$80,644.72
500 <u>Other Purchased Services</u>		
510 Student Transportation Services		47,940.28
530 Communications		15,578.94
549 Other Advertising/Public Relations		529.47
550 Printing and Binding		1,420.00
561 Tuition To Other School Districts Within the State		120,094.40
562 Tuition To Pennsylvania Charter Schools		4,142,644.77
563 Tuition To Nonpublic Schools		1,205,295.89
567 Tuition To Approved Private Schools (APS) and PA Chartered Schools for the Deaf and Blind		417,977.99
568 Tuition To Private Residential Rehabilitative Institutions (PRRI) [In-State] and Detention Centers		14,395.98
569 Tuition – Other		24,266.50
580 Travel		13,738.77
Total Other Purchased Services		\$6,003,882.99
600 <u>Supplies</u>		
610 General Supplies		784,033.95
640 Books and Periodicals		920,876.89
650 Supplies & Fees – Technology Related		590,272.81
Total Supplies		\$2,295,183.65
700 <u>Property</u>		
752 Capital Equipment – Original and Additional		294,628.34

LEA : 123466403 Pottstown SD

Printed 12/22/2022 12:13:06 PM

General Fund (10)		
1000 Instruction		<u>Total</u>
700 <u>Property</u>		
756 Capitalized Technology Equipment – Original		156.00
762 Capitalized Equipment - Replacement		54,125.53
Total Property		\$348,909.87
800 <u>Other Objects</u>		
810 Dues and Fees		170.00
890 Miscellaneous Expenditures		1,066,449.96
Total Other Objects		\$1,066,619.96
Total 1000 Instruction		\$43,235,708.66

LEA : 123466403 Pottstown SD

Printed 12/22/2022 12:13:06 PM

General Fund (10)

1100 Regular Programs – Elementary / Secondary	Elementary	Secondary	Federal	Total
100 Personnel Services – Salaries				
100 Personnel Services – Salaries	6,115,410.53	4,076,940.36	2,176,573.33	12,368,924.22
Total Personnel Services – Salaries	\$6,115,410.53	\$4,076,940.36	\$2,176,573.33	\$12,368,924.22
200 Personnel Services – Employee Benefits				
210 Group Insurance – Contracted Provider	1,203,503.85	802,335.90	487,912.31	2,493,752.06
220 Social Security Contributions	448,869.69	299,246.46	159,173.98	907,290.13
230 PSERS Retirement Contributions	2,403,282.62	1,602,188.41	286,359.84	4,291,830.87
250 Unemployment Compensation	66.26	44.17		110.43
260 Workers' Compensation	73,400.92	48,933.94		122,334.86
299 All Other Employee Benefits	45,014.40	30,009.60		75,024.00
Total Personnel Services – Employee Benefits	\$4,174,137.74	\$2,782,758.48	\$933,446.13	\$7,890,342.35
300 Purchased Professional and Technical Services				
322 Professional Educational Services – Ius	102.00	68.00	9,729.00	9,899.00
329 Professional Educational Services – Other	99,917.65	66,611.76	55,624.38	222,153.79
390 Other Purchased Professional and Technical Services	13,347.00	8,898.00		22,245.00
Total Purchased Professional and Technical Services	\$113,366.65	\$75,577.76	\$65,353.38	\$254,297.79
400 Purchased Property Services				
430 Repairs and Maintenance Services	3,851.45	2,567.63		6,419.08
Total Purchased Property Services	\$3,851.45	\$2,567.63		\$6,419.08
500 Other Purchased Services				
530 Communications			253.28	253.28
562 Tuition To Pennsylvania Charter Schools	1,302,424.91	868,283.28		2,170,708.19
568 Tuition To Private Residential Rehabilitative Institutions (PRRI) [In-State] and Detention Centers	280.73	187.16		467.89
580 Travel	194.86	129.90	2,763.91	3,088.67
Total Other Purchased Services	\$1,302,900.50	\$868,600.34	\$3,017.19	\$2,174,518.03
600 Supplies				
610 General Supplies	72,257.39	48,171.60	122,429.47	242,858.46
640 Books and Periodicals	11,870.41	7,913.60	459,876.44	479,660.45
650 Supplies & Fees – Technology Related	273,566.92	182,377.95		455,944.87
Total Supplies	\$357,694.72	\$238,463.15	\$582,305.91	\$1,178,463.78
700 Property				
756 Capitalized Technology Equipment – Original	93.60	62.40		156.00
762 Capitalized Equipment - Replacement	5,645.12	3,763.41		9,408.53
Total Property	\$5,738.72	\$3,825.81		\$9,564.53
Total 1100 Regular Programs – Elementary / Secondary	\$12,073,100.31	\$8,048,733.53	\$3,760,695.94	\$23,882,529.78

LEA : 123466403 Pottstown SD

Printed 12/22/2022 12:13:06 PM

General Fund (10)

1110 Regular Programs

	<u>Elementary</u>	<u>Secondary</u>	<u>Federal</u>	<u>Total</u>
100 <u>Personnel Services – Salaries</u>				
100 Personnel Services – Salaries	6,115,410.53	4,076,940.36	2,176,573.33	12,368,924.22
Total Personnel Services – Salaries	\$6,115,410.53	\$4,076,940.36	\$2,176,573.33	\$12,368,924.22
200 <u>Personnel Services – Employee Benefits</u>				
210 Group Insurance – Contracted Provider	1,203,503.85	802,335.90	487,912.31	2,493,752.06
220 Social Security Contributions	448,869.69	299,246.46	159,173.98	907,290.13
230 PSERS Retirement Contributions	2,403,282.62	1,602,188.41	286,359.84	4,291,830.87
250 Unemployment Compensation	66.26	44.17		110.43
260 Workers' Compensation	73,400.92	48,933.94		122,334.86
299 All Other Employee Benefits	45,014.40	30,009.60		75,024.00
Total Personnel Services – Employee Benefits	\$4,174,137.74	\$2,782,758.48	\$933,446.13	\$7,890,342.35
300 <u>Purchased Professional and Technical Services</u>				
322 Professional Educational Services – Ius	102.00	68.00	9,729.00	9,899.00
329 Professional Educational Services – Other	99,917.65	66,611.76	55,624.38	222,153.79
390 Other Purchased Professional and Technical Services	13,347.00	8,898.00		22,245.00
Total Purchased Professional and Technical Services	\$113,366.65	\$75,577.76	\$65,353.38	\$254,297.79
400 <u>Purchased Property Services</u>				
430 Repairs and Maintenance Services	3,851.45	2,567.63		6,419.08
Total Purchased Property Services	\$3,851.45	\$2,567.63		\$6,419.08
500 <u>Other Purchased Services</u>				
530 Communications			253.28	253.28
562 Tuition To Pennsylvania Charter Schools	1,302,424.91	868,283.28		2,170,708.19
568 Tuition To Private Residential Rehabilitative Institutions (PRRI) [In-State] and Detention Centers	280.73	187.16		467.89
580 Travel	194.86	129.90	2,763.91	3,088.67
Total Other Purchased Services	\$1,302,900.50	\$868,600.34	\$3,017.19	\$2,174,518.03
600 <u>Supplies</u>				
610 General Supplies	72,257.39	48,171.60	122,429.47	242,858.46
640 Books and Periodicals	11,870.41	7,913.60	459,876.44	479,660.45
650 Supplies & Fees – Technology Related	273,566.92	182,377.95		455,944.87
Total Supplies	\$357,694.72	\$238,463.15	\$582,305.91	\$1,178,463.78
700 <u>Property</u>				
756 Capitalized Technology Equipment – Original	93.60	62.40		156.00
762 Capitalized Equipment - Replacement	5,645.12	3,763.41		9,408.53
Total Property	\$5,738.72	\$3,825.81		\$9,564.53
Total 1110 Regular Programs	\$12,073,100.31	\$8,048,733.53	\$3,760,695.94	\$23,882,529.78

LEA : 123466403 Pottstown SD

Printed 12/22/2022 12:13:06 PM

General Fund (10)

1200 Special Programs – Elementary / Secondary	Elementary	Secondary	Federal	Total
100 Personnel Services – Salaries				
100 Personnel Services – Salaries	2,343,802.15	1,562,534.78	610,908.05	4,517,244.98
Total Personnel Services – Salaries	\$2,343,802.15	\$1,562,534.78	\$610,908.05	\$4,517,244.98
200 Personnel Services – Employee Benefits				
210 Group Insurance – Contracted Provider	667,511.08	445,007.37	124,213.91	1,236,732.36
220 Social Security Contributions	170,540.16	113,693.43	44,353.38	328,586.97
230 PSERS Retirement Contributions	813,131.20	542,087.46	209,933.04	1,565,151.70
250 Unemployment Compensation	1,288.66	859.11		2,147.77
299 All Other Employee Benefits	1,008.00	672.00		1,680.00
Total Personnel Services – Employee Benefits	\$1,653,479.10	\$1,102,319.37	\$378,500.33	\$3,134,298.80
300 Purchased Professional and Technical Services				
322 Professional Educational Services – lus	791,297.70	444,454.90	4,103.75	1,239,856.35
323 Professional Educational Services – Other Educational Agencies	158.40	105.60		264.00
329 Professional Educational Services – Other	30,427.36	20,284.90	222,448.33	273,160.59
330 Other Professional Services	74,037.73	49,358.48		123,396.21
390 Other Purchased Professional and Technical Services	38,932.91	25,955.28	38,650.00	103,538.19
Total Purchased Professional and Technical Services	\$934,854.10	\$540,159.16	\$265,202.08	\$1,740,215.34
400 Purchased Property Services				
440 Rentals	49.36	32.90		82.26
Total Purchased Property Services	\$49.36	\$32.90		\$82.26
500 Other Purchased Services				
510 Student Transportation Services	102.23	68.16		170.39
530 Communications	3,895.33	2,596.89	3,140.00	9,632.22
561 Tuition To Other School Districts Within the State	9,148.63	6,099.08		15,247.71
562 Tuition To Pennsylvania Charter Schools	1,183,161.95	788,774.63		1,971,936.58
563 Tuition To Nonpublic Schools	712,566.32	475,044.21		1,187,610.53
567 Tuition To Approved Private Schools (APS) and PA Chartered Schools for the Deaf and Blind	250,786.79	167,191.20		417,977.99
568 Tuition To Private Residential Rehabilitative Institutions (PRRI) [In-State] and Detention Centers	4,801.91	3,201.27		8,003.18
569 Tuition – Other	14,559.90	9,706.60		24,266.50
580 Travel	375.69	250.45		626.14
Total Other Purchased Services	\$2,179,398.75	\$1,452,932.49	\$3,140.00	\$3,635,471.24
600 Supplies				
610 General Supplies	205,232.17	136,821.46	2,643.00	344,696.63
640 Books and Periodicals	250,541.67	167,027.77	14,796.00	432,365.44
650 Supplies & Fees – Technology Related	46,232.15	30,821.43	44,034.33	121,087.91
Total Supplies	\$502,005.99	\$334,670.66	\$61,473.33	\$898,149.98
Total 1200 Special Programs – Elementary / Secondary	\$7,613,589.45	\$4,992,649.36	\$1,319,223.79	\$13,925,462.60

LEA : 123466403 Pottstown SD

Printed 12/22/2022 12:13:06 PM

General Fund (10)

1210 Life Skills Support

	<u>Elementary</u>	<u>Secondary</u>	<u>Federal</u>	<u>Total</u>
100 <u>Personnel Services – Salaries</u>				
100 Personnel Services – Salaries	202,333.76	134,889.18	185,857.22	523,080.16
Total Personnel Services – Salaries	\$202,333.76	\$134,889.18	\$185,857.22	\$523,080.16
200 <u>Personnel Services – Employee Benefits</u>				
210 Group Insurance – Contracted Provider	54,254.83	36,169.88	40,589.59	131,014.30
220 Social Security Contributions	14,798.51	9,865.67	13,322.34	37,986.52
230 PSERS Retirement Contributions	70,300.07	46,866.71	64,288.63	181,455.41
250 Unemployment Compensation	47.25	31.50		78.75
Total Personnel Services – Employee Benefits	\$139,400.66	\$92,933.76	\$118,200.56	\$350,534.98
300 <u>Purchased Professional and Technical Services</u>				
322 Professional Educational Services – Ius	57,164.46	38,109.64		95,274.10
329 Professional Educational Services – Other	2,473.60	1,649.07		4,122.67
Total Purchased Professional and Technical Services	\$59,638.06	\$39,758.71		\$99,396.77
600 <u>Supplies</u>				
610 General Supplies	6,018.41	4,012.28	70.99	10,101.68
Total Supplies	\$6,018.41	\$4,012.28	\$70.99	\$10,101.68
Total 1210 Life Skills Support	\$407,390.89	\$271,593.93	\$304,128.77	\$983,113.59

LEA : 123466403 Pottstown SD

Printed 12/22/2022 12:13:06 PM

General Fund (10)

1220 Sensory Support	<u>Elementary</u>	<u>Secondary</u>	<u>Federal</u>	<u>Total</u>
300 <u>Purchased Professional and Technical Services</u>				
322 Professional Educational Services – Ius	107,193.20	71,462.14		178,655.34
323 Professional Educational Services – Other Educational Agencies	158.40	105.60		264.00
329 Professional Educational Services – Other	19,400.07	12,933.38		32,333.45
Total Purchased Professional and Technical Services	\$126,751.67	\$84,501.12		\$211,252.79
600 <u>Supplies</u>				
610 General Supplies	113.52	75.68		189.20
Total Supplies	\$113.52	\$75.68		\$189.20
Total 1220 Sensory Support	\$126,865.19	\$84,576.80		\$211,441.99

LEA : 123466403 Pottstown SD

Printed 12/22/2022 12:13:06 PM

General Fund (10)

1230 Emotional Support

	Elementary	Secondary	Federal	Total
100 <u>Personnel Services – Salaries</u>				
100 Personnel Services – Salaries	630,914.14	420,609.42	117,498.13	1,169,021.69
Total Personnel Services – Salaries	\$630,914.14	\$420,609.42	\$117,498.13	\$1,169,021.69
200 <u>Personnel Services – Employee Benefits</u>				
210 Group Insurance – Contracted Provider	157,485.42	104,990.28	31,516.28	293,991.98
220 Social Security Contributions	46,212.94	30,808.62	8,198.65	85,220.21
230 PSERS Retirement Contributions	218,660.66	145,773.78	38,559.01	402,993.45
250 Unemployment Compensation	463.91	309.28		773.19
Total Personnel Services – Employee Benefits	\$422,822.93	\$281,881.96	\$78,273.94	\$782,978.83
300 <u>Purchased Professional and Technical Services</u>				
322 Professional Educational Services – Ius	281,369.38	187,579.59		468,948.97
329 Professional Educational Services – Other	2,590.19	1,726.79		4,316.98
Total Purchased Professional and Technical Services	\$283,959.57	\$189,306.38		\$473,265.95
400 <u>Purchased Property Services</u>				
440 Rentals	49.36	32.90		82.26
Total Purchased Property Services	\$49.36	\$32.90		\$82.26
500 <u>Other Purchased Services</u>				
530 Communications	544.44	362.96		907.40
561 Tuition To Other School Districts Within the State	9,148.63	6,099.08		15,247.71
563 Tuition To Nonpublic Schools	593,824.78	395,883.19		989,707.97
569 Tuition – Other	14,559.90	9,706.60		24,266.50
580 Travel	157.72	105.14		262.86
Total Other Purchased Services	\$618,235.47	\$412,156.97		\$1,030,392.44
600 <u>Supplies</u>				
610 General Supplies	150,039.38	100,026.26		250,065.64
650 Supplies & Fees – Technology Related	3,861.00	2,574.00		6,435.00
Total Supplies	\$153,900.38	\$102,600.26		\$256,500.64
Total 1230 Emotional Support	\$2,109,881.85	\$1,406,587.89	\$195,772.07	\$3,712,241.81

LEA : 123466403 Pottstown SD

Printed 12/22/2022 12:13:06 PM

General Fund (10)

1240 Academic Support

	Elementary	Secondary	Federal	Total
100 <u>Personnel Services – Salaries</u>				
100 Personnel Services – Salaries	1,297,787.10	865,191.41	114,104.39	2,277,082.90
Total Personnel Services – Salaries	\$1,297,787.10	\$865,191.41	\$114,104.39	\$2,277,082.90
200 <u>Personnel Services – Employee Benefits</u>				
210 Group Insurance – Contracted Provider	415,911.99	277,274.65	27,789.06	720,975.70
220 Social Security Contributions	93,879.40	62,586.26	8,369.42	164,835.08
230 PSERS Retirement Contributions	450,036.88	300,024.58	39,868.08	789,929.54
250 Unemployment Compensation	777.50	518.33		1,295.83
299 All Other Employee Benefits	1,008.00	672.00		1,680.00
Total Personnel Services – Employee Benefits	\$961,613.77	\$641,075.82	\$76,026.56	\$1,678,716.15
300 <u>Purchased Professional and Technical Services</u>				
322 Professional Educational Services – lus	14,896.09	9,930.72		24,826.81
Total Purchased Professional and Technical Services	\$14,896.09	\$9,930.72		\$24,826.81
500 <u>Other Purchased Services</u>				
510 Student Transportation Services	102.23	68.16		170.39
563 Tuition To Nonpublic Schools	62,873.99	41,915.99		104,789.98
580 Travel	217.97	145.31		363.28
Total Other Purchased Services	\$63,194.19	\$42,129.46		\$105,323.65
600 <u>Supplies</u>				
610 General Supplies	11,928.72	7,952.48		19,881.20
640 Books and Periodicals	31,529.09	21,019.39		52,548.48
Total Supplies	\$43,457.81	\$28,971.87		\$72,429.68
Total 1240 Academic Support	\$2,380,948.96	\$1,587,299.28	\$190,130.95	\$4,158,379.19

LEA : 123466403 Pottstown SD

Printed 12/22/2022 12:13:06 PM

General Fund (10)

1241 Learning Support – Public	Elementary	Secondary	Federal	Total
100 Personnel Services – Salaries				
100 Personnel Services – Salaries	1,244,687.20	829,791.47	114,104.39	2,188,583.06
Total Personnel Services – Salaries	\$1,244,687.20	\$829,791.47	\$114,104.39	\$2,188,583.06
200 Personnel Services – Employee Benefits				
210 Group Insurance – Contracted Provider	403,673.44	269,115.62	27,789.06	700,578.12
220 Social Security Contributions	89,997.18	59,998.12	8,369.42	158,364.72
230 PSERS Retirement Contributions	431,483.80	287,655.86	39,868.08	759,007.74
250 Unemployment Compensation	777.50	518.33		1,295.83
299 All Other Employee Benefits	1,008.00	672.00		1,680.00
Total Personnel Services – Employee Benefits	\$926,939.92	\$617,959.93	\$76,026.56	\$1,620,926.41
300 Purchased Professional and Technical Services				
322 Professional Educational Services – lus	14,896.09	9,930.72		24,826.81
Total Purchased Professional and Technical Services	\$14,896.09	\$9,930.72		\$24,826.81
500 Other Purchased Services				
510 Student Transportation Services	102.23	68.16		170.39
563 Tuition To Nonpublic Schools	62,873.99	41,915.99		104,789.98
580 Travel	217.97	145.31		363.28
Total Other Purchased Services	\$63,194.19	\$42,129.46		\$105,323.65
600 Supplies				
610 General Supplies	11,590.92	7,727.28		19,318.20
640 Books and Periodicals	31,529.09	21,019.39		52,548.48
Total Supplies	\$43,120.01	\$28,746.67		\$71,866.68
Total 1241 Learning Support – Public	\$2,292,837.41	\$1,528,558.25	\$190,130.95	\$4,011,526.61

LEA : 123466403 Pottstown SD

Printed 12/22/2022 12:13:06 PM

General Fund (10)

1243 Gifted Support	Elementary	Secondary	Federal	Total
100 Personnel Services – Salaries				
100 Personnel Services – Salaries	53,099.90	35,399.94		88,499.84
Total Personnel Services – Salaries	\$53,099.90	\$35,399.94		\$88,499.84
200 Personnel Services – Employee Benefits				
210 Group Insurance – Contracted Provider	12,238.55	8,159.03		20,397.58
220 Social Security Contributions	3,882.22	2,588.14		6,470.36
230 PSERS Retirement Contributions	18,553.08	12,368.72		30,921.80
Total Personnel Services – Employee Benefits	\$34,673.85	\$23,115.89		\$57,789.74
600 Supplies				
610 General Supplies	337.80	225.20		563.00
Total Supplies	\$337.80	\$225.20		\$563.00
Total 1243 Gifted Support	\$88,111.55	\$58,741.03		\$146,852.58

LEA : 123466403 Pottstown SD

Printed 12/22/2022 12:13:06 PM

General Fund (10)

1270 Multi-Handicapped Support	<u>Elementary</u>	<u>Secondary</u>	<u>Federal</u>	<u>Total</u>
300 <u>Purchased Professional and Technical Services</u>				
322 Professional Educational Services – lus	200,464.79	133,643.20		334,107.99
Total Purchased Professional and Technical Services	\$200,464.79	\$133,643.20		\$334,107.99
500 <u>Other Purchased Services</u>				
563 Tuition To Nonpublic Schools	55,867.55	37,245.03		93,112.58
Total Other Purchased Services	\$55,867.55	\$37,245.03		\$93,112.58
Total 1270 Multi-Handicapped Support	\$256,332.34	\$170,888.23		\$427,220.57

LEA : 123466403 Pottstown SD

Printed 12/22/2022 12:13:06 PM

General Fund (10)

1280 Early Intervention Support

	<u>Elementary</u>	<u>Secondary</u>	<u>Federal</u>	<u>Total</u>
300 <u>Purchased Professional and Technical Services</u>				
322 Professional Educational Services – lus	124,615.37			124,615.37
Total Purchased Professional and Technical Services	\$124,615.37			\$124,615.37
Total 1280 Early Intervention Support	\$124,615.37			\$124,615.37

LEA : 123466403 Pottstown SD

Printed 12/22/2022 12:13:06 PM

General Fund (10)				
1290 Special Programs - Other Support	<u>Elementary</u>	<u>Secondary</u>	<u>Federal</u>	<u>Total</u>
100 <u>Personnel Services – Salaries</u>				
100 Personnel Services – Salaries	212,767.15	141,844.77	193,448.31	548,060.23
Total Personnel Services – Salaries	\$212,767.15	\$141,844.77	\$193,448.31	\$548,060.23
200 <u>Personnel Services – Employee Benefits</u>				
210 Group Insurance – Contracted Provider	39,858.84	26,572.56	24,318.98	90,750.38
220 Social Security Contributions	15,649.31	10,432.88	14,462.97	40,545.16
230 PSERS Retirement Contributions	74,133.59	49,422.39	67,217.32	190,773.30
Total Personnel Services – Employee Benefits	\$129,641.74	\$86,427.83	\$105,999.27	\$322,068.84
300 <u>Purchased Professional and Technical Services</u>				
322 Professional Educational Services – Ius	5,594.41	3,729.61	4,103.75	13,427.77
329 Professional Educational Services – Other	5,963.50	3,975.66	222,448.33	232,387.49
330 Other Professional Services	74,037.73	49,358.48		123,396.21
390 Other Purchased Professional and Technical Services	38,932.91	25,955.28	38,650.00	103,538.19
Total Purchased Professional and Technical Services	\$124,528.55	\$83,019.03	\$265,202.08	\$472,749.66
500 <u>Other Purchased Services</u>				
530 Communications	3,350.89	2,233.93	3,140.00	8,724.82
562 Tuition To Pennsylvania Charter Schools	1,183,161.95	788,774.63		1,971,936.58
567 Tuition To Approved Private Schools (APS) and PA Chartered Schools for the Deaf and Blind	250,786.79	167,191.20		417,977.99
568 Tuition To Private Residential Rehabilitative Institutions (PRRI) [In-State] and Detention Centers	4,801.91	3,201.27		8,003.18
Total Other Purchased Services	\$1,442,101.54	\$961,401.03	\$3,140.00	\$2,406,642.57
600 <u>Supplies</u>				
610 General Supplies	37,132.14	24,754.76	2,572.01	64,458.91
640 Books and Periodicals	219,012.58	146,008.38	14,796.00	379,816.96
650 Supplies & Fees – Technology Related	42,371.15	28,247.43	44,034.33	114,652.91
Total Supplies	\$298,515.87	\$199,010.57	\$61,402.34	\$558,928.78
Total 1290 Special Programs - Other Support	\$2,207,554.85	\$1,471,703.23	\$629,192.00	\$4,308,450.08

LEA : 123466403 Pottstown SD

Printed 12/22/2022 12:13:06 PM

General Fund (10)

1300 Vocational Education	Elementary	Secondary	Federal	Total
100 <u>Personnel Services – Salaries</u>				
100 Personnel Services – Salaries		670,151.31	21,735.00	691,886.31
Total Personnel Services – Salaries		\$670,151.31	\$21,735.00	\$691,886.31
200 <u>Personnel Services – Employee Benefits</u>				
210 Group Insurance – Contracted Provider		180,235.33		180,235.33
220 Social Security Contributions		48,303.26	1,662.79	49,966.05
230 PSERS Retirement Contributions		237,634.78	2,278.26	239,913.04
299 All Other Employee Benefits		1,280.00		1,280.00
Total Personnel Services – Employee Benefits		\$467,453.37	\$3,941.05	\$471,394.42
300 <u>Purchased Professional and Technical Services</u>				
390 Other Purchased Professional and Technical Services			305.00	305.00
Total Purchased Professional and Technical Services			\$305.00	\$305.00
400 <u>Purchased Property Services</u>				
430 Repairs and Maintenance Services		130.65		130.65
Total Purchased Property Services		\$130.65		\$130.65
500 <u>Other Purchased Services</u>				
580 Travel		3,000.00	752.96	3,752.96
Total Other Purchased Services		\$3,000.00	\$752.96	\$3,752.96
600 <u>Supplies</u>				
610 General Supplies		61,516.60	54,757.34	116,273.94
Total Supplies		\$61,516.60	\$54,757.34	\$116,273.94
700 <u>Property</u>				
752 Capital Equipment – Original and Additional		282,283.34	12,345.00	294,628.34
762 Capitalized Equipment - Replacement		40,245.30	4,471.70	44,717.00
Total Property		\$322,528.64	\$16,816.70	\$339,345.34
Total 1300 Vocational Education		\$1,524,780.57	\$98,308.05	\$1,623,088.62

LEA : 123466403 Pottstown SD

Printed 12/22/2022 12:13:06 PM

General Fund (10)

1400 Other Instructional Programs – Elementary / Secondary	Elementary	Secondary	Federal	Total
100 Personnel Services – Salaries				
100 Personnel Services – Salaries	92,941.45	61,960.97	149,643.72	304,546.14
Total Personnel Services – Salaries	\$92,941.45	\$61,960.97	\$149,643.72	\$304,546.14
200 Personnel Services – Employee Benefits				
210 Group Insurance – Contracted Provider	12,051.90	8,034.60		20,086.50
220 Social Security Contributions	6,953.00	4,635.33	11,010.42	22,598.75
230 PSERS Retirement Contributions	53,925.83	35,950.56	15,679.63	105,556.02
299 All Other Employee Benefits	1,080.00	720.00		1,800.00
Total Personnel Services – Employee Benefits	\$74,010.73	\$49,340.49	\$26,690.05	\$150,041.27
300 Purchased Professional and Technical Services				
322 Professional Educational Services – Ius	140,017.92	93,345.29		233,363.21
323 Professional Educational Services – Other Educational Agencies	16,541.06	11,027.37		27,568.43
390 Other Purchased Professional and Technical Services			50,234.18	50,234.18
Total Purchased Professional and Technical Services	\$156,558.98	\$104,372.66	\$50,234.18	\$311,165.82
500 Other Purchased Services				
510 Student Transportation Services			47,769.89	47,769.89
530 Communications	1,255.50	837.01	1,526.81	3,619.32
550 Printing and Binding			1,420.00	1,420.00
561 Tuition To Other School Districts Within the State	62,908.01	41,938.68		104,846.69
563 Tuition To Nonpublic Schools	10,611.22	7,074.14		17,685.36
568 Tuition To Private Residential Rehabilitative Institutions (PRRI) [In-State] and Detention Centers	3,554.95	2,369.96		5,924.91
580 Travel	176.00	117.34	5,254.74	5,548.08
Total Other Purchased Services	\$78,505.68	\$52,337.13	\$55,971.44	\$186,814.25
600 Supplies				
610 General Supplies	552.29	368.20	46,943.67	47,864.16
640 Books and Periodicals	180.00	120.00		300.00
650 Supplies & Fees – Technology Related	2,719.97	1,813.31		4,533.28
Total Supplies	\$3,452.26	\$2,301.51	\$46,943.67	\$52,697.44
800 Other Objects				
810 Dues and Fees	102.00	68.00		170.00
Total Other Objects	\$102.00	\$68.00		\$170.00
Total 1400 Other Instructional Programs – Elementary / Secondary	\$405,571.10	\$270,380.76	\$329,483.06	\$1,005,434.92

LEA : 123466403 Pottstown SD

Printed 12/22/2022 12:13:06 PM

General Fund (10)

1430 Homebound Instruction	<u>Elementary</u>	<u>Secondary</u>	<u>Federal</u>	<u>Total</u>
300 <u>Purchased Professional and Technical Services</u>				
322 Professional Educational Services – Ius	320.93	213.96		534.89
323 Professional Educational Services – Other Educational Agencies	6,039.86	4,026.57		10,066.43
Total Purchased Professional and Technical Services	\$6,360.79	\$4,240.53		\$10,601.32
500 <u>Other Purchased Services</u>				
563 Tuition To Nonpublic Schools	184.80	123.20		308.00
Total Other Purchased Services	\$184.80	\$123.20		\$308.00
Total 1430 Homebound Instruction	\$6,545.59	\$4,363.73		\$10,909.32

LEA : 123466403 Pottstown SD

Printed 12/22/2022 12:13:06 PM

General Fund (10)

1440 Alternative Regular Education Programs	Elementary	Secondary	Federal	Total
100 <u>Personnel Services – Salaries</u>				
100 Personnel Services – Salaries	92,941.45	61,960.97		154,902.42
Total Personnel Services – Salaries	\$92,941.45	\$61,960.97		\$154,902.42
200 <u>Personnel Services – Employee Benefits</u>				
210 Group Insurance – Contracted Provider	12,043.26	8,028.84		20,072.10
220 Social Security Contributions	6,953.00	4,635.33		11,588.33
230 PSERS Retirement Contributions	32,030.88	21,353.92		53,384.80
299 All Other Employee Benefits	1,080.00	720.00		1,800.00
Total Personnel Services – Employee Benefits	\$52,107.14	\$34,738.09		\$86,845.23
300 <u>Purchased Professional and Technical Services</u>				
322 Professional Educational Services – Ius	139,696.99	93,131.33		232,828.32
323 Professional Educational Services – Other Educational Agencies	10,501.20	7,000.80		17,502.00
Total Purchased Professional and Technical Services	\$150,198.19	\$100,132.13		\$250,330.32
500 <u>Other Purchased Services</u>				
530 Communications	1,088.99	726.00		1,814.99
561 Tuition To Other School Districts Within the State	62,908.01	41,938.68		104,846.69
563 Tuition To Nonpublic Schools	10,426.42	6,950.94		17,377.36
568 Tuition To Private Residential Rehabilitative Institutions (PRRI) [In-State] and Detention Centers	3,554.95	2,369.96		5,924.91
580 Travel	176.00	117.34		293.34
Total Other Purchased Services	\$78,154.37	\$52,102.92		\$130,257.29
600 <u>Supplies</u>				
610 General Supplies	532.32	354.88		887.20
640 Books and Periodicals	180.00	120.00		300.00
650 Supplies & Fees – Technology Related	2,719.97	1,813.31		4,533.28
Total Supplies	\$3,432.29	\$2,288.19		\$5,720.48
800 <u>Other Objects</u>				
810 Dues and Fees	102.00	68.00		170.00
Total Other Objects	\$102.00	\$68.00		\$170.00
Total 1440 Alternative Regular Education Programs	\$376,935.44	\$251,290.30		\$628,225.74

LEA : 123466403 Pottstown SD

Printed 12/22/2022 12:13:06 PM

General Fund (10)

1441 Adjudicated / Court-Placed Programs	<u>Elementary</u>	<u>Secondary</u>	<u>Federal</u>	<u>Total</u>
300 <u>Purchased Professional and Technical Services</u>				
322 Professional Educational Services – Ius	139,696.99	93,131.33		232,828.32
323 Professional Educational Services – Other Educational Agencies	10,501.20	7,000.80		17,502.00
Total Purchased Professional and Technical Services	\$150,198.19	\$100,132.13		\$250,330.32
500 <u>Other Purchased Services</u>				
561 Tuition To Other School Districts Within the State	62,908.01	41,938.68		104,846.69
Total Other Purchased Services	\$62,908.01	\$41,938.68		\$104,846.69
Total 1441 Adjudicated / Court-Placed Programs	\$213,106.20	\$142,070.81		\$355,177.01

LEA : 123466403 Pottstown SD

Printed 12/22/2022 12:13:06 PM

General Fund (10)

1442 Alternative Education Programs	Elementary	Secondary	Federal	Total
100 Personnel Services – Salaries				
100 Personnel Services – Salaries	92,941.45	61,960.97		154,902.42
Total Personnel Services – Salaries	\$92,941.45	\$61,960.97		\$154,902.42
200 Personnel Services – Employee Benefits				
210 Group Insurance – Contracted Provider	12,043.26	8,028.84		20,072.10
220 Social Security Contributions	6,953.00	4,635.33		11,588.33
230 PSERS Retirement Contributions	32,030.88	21,353.92		53,384.80
299 All Other Employee Benefits	1,080.00	720.00		1,800.00
Total Personnel Services – Employee Benefits	\$52,107.14	\$34,738.09		\$86,845.23
500 Other Purchased Services				
530 Communications	1,088.99	726.00		1,814.99
563 Tuition To Nonpublic Schools	10,426.42	6,950.94		17,377.36
568 Tuition To Private Residential Rehabilitative Institutions (PRRI) [In-State] and Detention Centers	3,554.95	2,369.96		5,924.91
580 Travel	176.00	117.34		293.34
Total Other Purchased Services	\$15,246.36	\$10,164.24		\$25,410.60
600 Supplies				
610 General Supplies	532.32	354.88		887.20
640 Books and Periodicals	180.00	120.00		300.00
650 Supplies & Fees – Technology Related	2,719.97	1,813.31		4,533.28
Total Supplies	\$3,432.29	\$2,288.19		\$5,720.48
800 Other Objects				
810 Dues and Fees	102.00	68.00		170.00
Total Other Objects	\$102.00	\$68.00		\$170.00
Total 1442 Alternative Education Programs	\$163,829.24	\$109,219.49		\$273,048.73

LEA : 123466403 Pottstown SD

Printed 12/22/2022 12:13:06 PM

General Fund (10)

1450 Instructional Programs Outside the Established School Day	<u>Elementary</u>	<u>Secondary</u>	<u>Federal</u>	<u>Total</u>
100 <u>Personnel Services – Salaries</u>				
100 Personnel Services – Salaries			149,643.72	149,643.72
Total Personnel Services – Salaries			\$149,643.72	\$149,643.72
200 <u>Personnel Services – Employee Benefits</u>				
210 Group Insurance – Contracted Provider	8.64	5.76		14.40
220 Social Security Contributions			11,010.42	11,010.42
230 PSERS Retirement Contributions	21,894.95	14,596.64	15,679.63	52,171.22
Total Personnel Services – Employee Benefits	\$21,903.59	\$14,602.40	\$26,690.05	\$63,196.04
300 <u>Purchased Professional and Technical Services</u>				
390 Other Purchased Professional and Technical Services			50,234.18	50,234.18
Total Purchased Professional and Technical Services			\$50,234.18	\$50,234.18
500 <u>Other Purchased Services</u>				
510 Student Transportation Services			47,769.89	47,769.89
530 Communications	166.51	111.01	1,526.81	1,804.33
550 Printing and Binding			1,420.00	1,420.00
580 Travel			5,254.74	5,254.74
Total Other Purchased Services	\$166.51	\$111.01	\$55,971.44	\$56,248.96
600 <u>Supplies</u>				
610 General Supplies	19.97	13.32	46,943.67	46,976.96
Total Supplies	\$19.97	\$13.32	\$46,943.67	\$46,976.96
Total 1450 Instructional Programs Outside the Established School Day	\$22,090.07	\$14,726.73	\$329,483.06	\$366,299.86

LEA : 123466403 Pottstown SD

Printed 12/22/2022 12:13:06 PM

General Fund (10)

1500 Nonpublic School Programs

Elementary Secondary Federal Total

300 Purchased Professional and Technical Services

323 Professional Educational Services – Other Educational Agencies 5,425.56 5,425.56

Total Purchased Professional and Technical Services \$5,425.56 \$5,425.56

600 Supplies

610 General Supplies 79.85 79.85

640 Books and Periodicals (197.00) (197.00)

Total Supplies (\$117.15) (\$117.15)

Total 1500 Nonpublic School Programs \$5,308.41 \$5,308.41

LEA : 123466403 Pottstown SD

Printed 12/22/2022 12:13:06 PM

General Fund (10)				
1800 Pre-Kindergarten	<u>Elementary</u>	<u>Secondary</u>	<u>Federal</u>	<u>Total</u>
100 <u>Personnel Services – Salaries</u>				
100 Personnel Services – Salaries				877,427.17
Total Personnel Services – Salaries				\$877,427.17
200 <u>Personnel Services – Employee Benefits</u>				
210 Group Insurance – Contracted Provider				241,445.66
220 Social Security Contributions				62,747.53
230 PSERS Retirement Contributions				295,530.37
299 All Other Employee Benefits				2,533.00
Total Personnel Services – Employee Benefits				\$602,256.56
300 <u>Purchased Professional and Technical Services</u>				
322 Professional Educational Services – Ius				9,600.00
329 Professional Educational Services – Other				4,973.82
330 Other Professional Services				12,500.00
390 Other Purchased Professional and Technical Services				93,621.92
Total Purchased Professional and Technical Services				\$120,695.74
400 <u>Purchased Property Services</u>				
410 Cleaning Services				1,412.73
440 Rentals				72,600.00
Total Purchased Property Services				\$74,012.73
500 <u>Other Purchased Services</u>				
530 Communications				2,074.12
549 Other Advertising/Public Relations				529.47
580 Travel				722.92
Total Other Purchased Services				\$3,326.51
600 <u>Supplies</u>				
610 General Supplies			4,412.83	32,260.91
640 Books and Periodicals			8,748.00	8,748.00
650 Supplies & Fees – Technology Related				8,706.75
Total Supplies			\$13,160.83	\$49,715.66
800 <u>Other Objects</u>				
890 Miscellaneous Expenditures				1,066,449.96
Total Other Objects				\$1,066,449.96
Total 1800 Pre-Kindergarten			\$13,160.83	\$2,793,884.33

LEA : 123466403 Pottstown SD

Printed 12/22/2022 12:13:06 PM

General Fund (10)

1801 Pre-K Instruction

Elementary Secondary Federal Total

100 <u>Personnel Services – Salaries</u>				
100 Personnel Services – Salaries				431,179.41
Total Personnel Services – Salaries				\$431,179.41
200 <u>Personnel Services – Employee Benefits</u>				
210 Group Insurance – Contracted Provider				94,850.45
220 Social Security Contributions				32,133.60
230 PSERS Retirement Contributions				149,030.94
Total Personnel Services – Employee Benefits				\$276,014.99
500 <u>Other Purchased Services</u>				
530 Communications				1,794.21
580 Travel				722.92
Total Other Purchased Services				\$2,517.13
600 <u>Supplies</u>				
610 General Supplies				59.79
650 Supplies & Fees – Technology Related				8,706.75
Total Supplies				\$8,766.54
Total 1801 Pre-K Instruction				\$718,478.07

LEA : 123466403 Pottstown SD

Printed 12/22/2022 12:13:06 PM

General Fund (10)

1802 Pre-K Administrative Support	<u>Elementary</u>	<u>Secondary</u>	<u>Federal</u>	<u>Total</u>
100 <u>Personnel Services – Salaries</u>				
100 Personnel Services – Salaries				446,247.76
Total Personnel Services – Salaries				\$446,247.76
200 <u>Personnel Services – Employee Benefits</u>				
210 Group Insurance – Contracted Provider				146,595.21
220 Social Security Contributions				30,613.93
230 PSERS Retirement Contributions				146,499.43
299 All Other Employee Benefits				2,533.00
Total Personnel Services – Employee Benefits				\$326,241.57
300 <u>Purchased Professional and Technical Services</u>				
322 Professional Educational Services – Ius				9,600.00
330 Other Professional Services				12,500.00
390 Other Purchased Professional and Technical Services				23,680.63
Total Purchased Professional and Technical Services				\$45,780.63
400 <u>Purchased Property Services</u>				
410 Cleaning Services				1,412.73
440 Rentals				72,600.00
Total Purchased Property Services				\$74,012.73
500 <u>Other Purchased Services</u>				
530 Communications				279.91
549 Other Advertising/Public Relations				529.47
Total Other Purchased Services				\$809.38
600 <u>Supplies</u>				
610 General Supplies			4,412.83	32,201.12
640 Books and Periodicals			8,748.00	8,748.00
Total Supplies			\$13,160.83	\$40,949.12
Total 1802 Pre-K Administrative Support			\$13,160.83	\$934,041.19

LEA : 123466403 Pottstown SD

Printed 12/22/2022 12:13:06 PM

General Fund (10)

1806 Pre-K Professional Development	<u>Elementary</u>	<u>Secondary</u>	<u>Federal</u>	<u>Total</u>
300 <u>Purchased Professional and Technical Services</u>				
329 Professional Educational Services – Other				4,973.82
390 Other Purchased Professional and Technical Services				69,941.29
Total Purchased Professional and Technical Services				\$74,915.11
Total 1806 Pre-K Professional Development				\$74,915.11

LEA : 123466403 Pottstown SD

Printed 12/22/2022 12:13:06 PM

General Fund (10)				
1807 Pre-K Pass-Through Funds (Partners)	<u>Elementary</u>	<u>Secondary</u>	<u>Federal</u>	<u>Total</u>
800 <u>Other Objects</u>				
890 Miscellaneous Expenditures				1,066,449.96
Total Other Objects				\$1,066,449.96
Total 1807 Pre-K Pass-Through Funds (Partners)				\$1,066,449.96

LEA : 123466403 Pottstown SD

Printed 12/22/2022 12:13:10 PM

General Fund (10)

2000 Support Services		<u>Total</u>
100 <u>Personnel Services – Salaries</u>		
100 Personnel Services – Salaries		7,299,189.12
Total Personnel Services – Salaries		\$7,299,189.12
200 <u>Personnel Services – Employee Benefits</u>		
210 Group Insurance – Contracted Provider		1,358,267.54
220 Social Security Contributions		538,520.46
230 PSERS Retirement Contributions		2,526,463.92
240 Tuition Reimbursement		53,606.03
250 Unemployment Compensation		4,370.69
280 Other Post-Employment Benefits (OPEB)		14,703.60
299 All Other Employee Benefits		47,749.09
Total Personnel Services – Employee Benefits		\$4,543,681.33
300 <u>Purchased Professional and Technical Services</u>		
322 Professional Educational Services – Ius		222,639.65
329 Professional Educational Services – Other		481,246.80
330 Other Professional Services		1,139,515.58
350 Security / Safety Services		229,750.52
360 Employee Training and Development Services		61,759.03
390 Other Purchased Professional and Technical Services		211,972.18
Total Purchased Professional and Technical Services		\$2,346,883.76
400 <u>Purchased Property Services</u>		
410 Cleaning Services		283,031.61
420 Utility Services		87,573.99
430 Repairs and Maintenance Services		755,217.99
440 Rentals		41,029.38
450 Construction Services		30,710.00
460 Extermination Services		9,445.03
Total Purchased Property Services		\$1,207,008.00
500 <u>Other Purchased Services</u>		
513 Contracted Carriers		1,806,238.63
516 Student Transportation Services From the IU		332,021.21
519 Student Transportation Services From Other Sources		25,508.56
520 Insurance – General		267,737.24
522 Automotive Liability Insurance		10,441.00
523 General Property and Liability Insurance		38,556.00
530 Communications		87,929.91
549 Other Advertising/Public Relations		5,565.90
580 Travel		10,943.16
595 IU Payments By Withholding		15,859.82
Total Other Purchased Services		\$2,600,801.43
600 <u>Supplies</u>		
610 General Supplies		1,029,726.71
620 Energy		579,820.25
640 Books and Periodicals		32,979.29

LEA : 123466403 Pottstown SD

Printed 12/22/2022 12:13:10 PM

General Fund (10)

2000 Support Services

Total

600 <u>Supplies</u>	
650 Supplies & Fees – Technology Related	1,116,619.63
Total Supplies	\$2,759,145.88
700 <u>Property</u>	
752 Capital Equipment – Original and Additional	568,198.05
762 Capitalized Equipment - Replacement	78,960.00
790 Other Property	10,472.58
Total Property	\$657,630.63
800 <u>Other Objects</u>	
810 Dues and Fees	39,249.29
890 Miscellaneous Expenditures	373.18
Total Other Objects	\$39,622.47
Total 2000 Support Services	\$21,453,962.62

LEA : 123466403 Pottstown SD

Printed 12/22/2022 12:13:10 PM

General Fund (10)

2100 Support Services – Students	Elementary	Secondary	Federal	Total
100 Personnel Services – Salaries				
100 Personnel Services – Salaries	820,088.97	546,725.98	110,900.88	1,625,122.02
Total Personnel Services – Salaries	\$820,088.97	\$546,725.98	\$110,900.88	\$1,625,122.02
200 Personnel Services – Employee Benefits				
210 Group Insurance – Contracted Provider	122,793.98	81,862.66	21,220.43	269,493.57
220 Social Security Contributions	60,803.33	40,535.56	8,223.36	120,410.71
230 PSERS Retirement Contributions	300,963.49	200,642.32	11,608.93	564,620.02
Total Personnel Services – Employee Benefits	\$484,560.80	\$323,040.54	\$41,052.72	\$954,524.30
300 Purchased Professional and Technical Services				
322 Professional Educational Services – Ius	25,173.75	16,782.50		41,956.25
329 Professional Educational Services – Other	138,975.45	92,650.30	119,909.98	351,535.73
330 Other Professional Services	147,536.08	98,357.38		245,893.46
390 Other Purchased Professional and Technical Services				1,119.00
Total Purchased Professional and Technical Services	\$311,685.28	\$207,790.18	\$119,909.98	\$640,504.44
400 Purchased Property Services				
440 Rentals	161.34	107.56		268.90
Total Purchased Property Services	\$161.34	\$107.56		\$268.90
500 Other Purchased Services				
530 Communications	603.58	402.38		1,005.96
549 Other Advertising/Public Relations	575.76	383.84		959.60
580 Travel	148.88	99.25	137.71	1,384.84
Total Other Purchased Services	\$1,328.22	\$885.47	\$137.71	\$3,350.40
600 Supplies				
610 General Supplies	11,171.23	7,447.48	915.77	29,034.48
650 Supplies & Fees – Technology Related	5,897.36	3,931.58	4,727.92	14,556.86
Total Supplies	\$17,068.59	\$11,379.06	\$5,643.69	\$43,591.34
800 Other Objects				
810 Dues and Fees	529.80	353.20	506.00	1,549.00
Total Other Objects	\$529.80	\$353.20	\$506.00	\$1,549.00
Total 2100 Support Services – Students	\$1,635,423.00	\$1,090,281.99	\$278,150.98	\$3,268,910.40

LEA : 123466403 Pottstown SD

Printed 12/22/2022 12:13:10 PM

General Fund (10)

2110 Supervision of Student Services	<u>Elementary</u>	<u>Secondary</u>	<u>Federal</u>	<u>Total</u>
100 <u>Personnel Services – Salaries</u>				
100 Personnel Services – Salaries	34,765.75	23,177.17	58,101.64	116,044.56
Total Personnel Services – Salaries	\$34,765.75	\$23,177.17	\$58,101.64	\$116,044.56
200 <u>Personnel Services – Employee Benefits</u>				
210 Group Insurance – Contracted Provider	6,442.86	4,295.24	15,601.60	26,339.70
220 Social Security Contributions	2,524.28	1,682.85	4,278.87	8,486.00
230 PSERS Retirement Contributions	20,673.50	13,782.33	6,090.18	40,546.01
Total Personnel Services – Employee Benefits	\$29,640.64	\$19,760.42	\$25,970.65	\$75,371.71
300 <u>Purchased Professional and Technical Services</u>				
329 Professional Educational Services – Other			38,234.99	38,234.99
330 Other Professional Services	306.00	204.00		510.00
Total Purchased Professional and Technical Services	\$306.00	\$204.00	\$38,234.99	\$38,744.99
400 <u>Purchased Property Services</u>				
440 Rentals	161.34	107.56		268.90
Total Purchased Property Services	\$161.34	\$107.56		\$268.90
500 <u>Other Purchased Services</u>				
530 Communications	603.58	402.38		1,005.96
Total Other Purchased Services	\$603.58	\$402.38		\$1,005.96
600 <u>Supplies</u>				
610 General Supplies	617.98	411.99		1,029.97
Total Supplies	\$617.98	\$411.99		\$1,029.97
800 <u>Other Objects</u>				
810 Dues and Fees	529.80	353.20		883.00
Total Other Objects	\$529.80	\$353.20		\$883.00
Total 2110 Supervision of Student Services	\$66,625.09	\$44,416.72	\$122,307.28	\$233,349.09

LEA : 123466403 Pottstown SD

Printed 12/22/2022 12:13:10 PM

General Fund (10)				
2111 Supervision of Student Services – Head of Component	<u>Elementary</u>	<u>Secondary</u>	<u>Federal</u>	<u>Total</u>
100 <u>Personnel Services – Salaries</u>				
100 Personnel Services – Salaries	34,765.75	23,177.17	58,101.64	116,044.56
Total Personnel Services – Salaries	\$34,765.75	\$23,177.17	\$58,101.64	\$116,044.56
200 <u>Personnel Services – Employee Benefits</u>				
210 Group Insurance – Contracted Provider	6,442.86	4,295.24	15,601.60	26,339.70
220 Social Security Contributions	2,524.28	1,682.85	4,278.87	8,486.00
230 PSERS Retirement Contributions	20,673.50	13,782.33	6,090.18	40,546.01
Total Personnel Services – Employee Benefits	\$29,640.64	\$19,760.42	\$25,970.65	\$75,371.71
300 <u>Purchased Professional and Technical Services</u>				
329 Professional Educational Services – Other			38,234.99	38,234.99
330 Other Professional Services	306.00	204.00		510.00
Total Purchased Professional and Technical Services	\$306.00	\$204.00	\$38,234.99	\$38,744.99
400 <u>Purchased Property Services</u>				
440 Rentals	161.34	107.56		268.90
Total Purchased Property Services	\$161.34	\$107.56		\$268.90
500 <u>Other Purchased Services</u>				
530 Communications	603.58	402.38		1,005.96
Total Other Purchased Services	\$603.58	\$402.38		\$1,005.96
600 <u>Supplies</u>				
610 General Supplies	617.98	411.99		1,029.97
Total Supplies	\$617.98	\$411.99		\$1,029.97
800 <u>Other Objects</u>				
810 Dues and Fees	529.80	353.20		883.00
Total Other Objects	\$529.80	\$353.20		\$883.00
Total 2111 Supervision of Student Services – Head of Component	\$66,625.09	\$44,416.72	\$122,307.28	\$233,349.09

LEA : 123466403 Pottstown SD

Printed 12/22/2022 12:13:10 PM

General Fund (10)

2120 Guidance Services	Elementary	Secondary	Federal	Total
100 Personnel Services – Salaries				
100 Personnel Services – Salaries	266,222.07	177,481.38	42,412.47	486,115.92
Total Personnel Services – Salaries	\$266,222.07	\$177,481.38	\$42,412.47	\$486,115.92
200 Personnel Services – Employee Benefits				
210 Group Insurance – Contracted Provider	38,024.75	25,349.84	5,618.83	68,993.42
220 Social Security Contributions	19,770.97	13,180.65	3,152.35	36,103.97
230 PSERS Retirement Contributions	98,381.96	65,587.97	4,437.96	168,407.89
Total Personnel Services – Employee Benefits	\$156,177.68	\$104,118.46	\$13,209.14	\$273,505.28
300 Purchased Professional and Technical Services				
329 Professional Educational Services – Other			38,234.99	38,234.99
Total Purchased Professional and Technical Services			\$38,234.99	\$38,234.99
500 Other Purchased Services				
549 Other Advertising/Public Relations	575.76	383.84		959.60
580 Travel	6.34	4.22	137.71	148.27
Total Other Purchased Services	\$582.10	\$388.06	\$137.71	\$1,107.87
600 Supplies				
650 Supplies & Fees – Technology Related	5,897.36	3,931.58	4,727.92	14,556.86
Total Supplies	\$5,897.36	\$3,931.58	\$4,727.92	\$14,556.86
Total 2120 Guidance Services	\$428,879.21	\$285,919.48	\$98,722.23	\$813,520.92

LEA : 123466403 Pottstown SD

Printed 12/22/2022 12:13:10 PM

General Fund (10)				
2130 Attendance Services	<u>Elementary</u>	<u>Secondary</u>	<u>Federal</u>	<u>Total</u>
600 <u>Supplies</u>				
610 General Supplies			915.77	915.77
Total Supplies			\$915.77	\$915.77
Total 2130 Attendance Services			\$915.77	\$915.77

LEA : 123466403 Pottstown SD

Printed 12/22/2022 12:13:10 PM

General Fund (10)

2140 Psychological Services	Elementary	Secondary	Federal	Total
100 <u>Personnel Services – Salaries</u>				
100 Personnel Services – Salaries	272,365.80	181,577.20	10,386.77	464,329.77
Total Personnel Services – Salaries	\$272,365.80	\$181,577.20	\$10,386.77	\$464,329.77
200 <u>Personnel Services – Employee Benefits</u>				
210 Group Insurance – Contracted Provider	42,392.18	28,261.45		70,653.63
220 Social Security Contributions	20,199.54	13,466.36	792.14	34,458.04
230 PSERS Retirement Contributions	96,478.96	64,319.30	1,080.79	161,879.05
Total Personnel Services – Employee Benefits	\$159,070.68	\$106,047.11	\$1,872.93	\$266,990.72
300 <u>Purchased Professional and Technical Services</u>				
329 Professional Educational Services – Other	138,975.45	92,650.30	43,440.00	275,065.75
330 Other Professional Services	147,230.08	98,153.38		245,383.46
Total Purchased Professional and Technical Services	\$286,205.53	\$190,803.68	\$43,440.00	\$520,449.21
500 <u>Other Purchased Services</u>				
580 Travel	110.93	73.95		184.88
Total Other Purchased Services	\$110.93	\$73.95		\$184.88
600 <u>Supplies</u>				
610 General Supplies	5,504.45	3,669.63		9,174.08
Total Supplies	\$5,504.45	\$3,669.63		\$9,174.08
Total 2140 Psychological Services	\$723,257.39	\$482,171.57	\$55,699.70	\$1,261,128.66

LEA : 123466403 Pottstown SD

Printed 12/22/2022 12:13:10 PM

General Fund (10)

2150 Speech Pathology and Audiology Services	<u>Elementary</u>	<u>Secondary</u>	<u>Federal</u>	<u>Total</u>
100 <u>Personnel Services – Salaries</u>				
100 Personnel Services – Salaries	246,735.35	164,490.23		411,225.58
Total Personnel Services – Salaries	\$246,735.35	\$164,490.23		\$411,225.58
200 <u>Personnel Services – Employee Benefits</u>				
210 Group Insurance – Contracted Provider	35,934.19	23,956.13		59,890.32
220 Social Security Contributions	18,308.54	12,205.70		30,514.24
230 PSERS Retirement Contributions	85,429.07	56,952.72		142,381.79
Total Personnel Services – Employee Benefits	\$139,671.80	\$93,114.55		\$232,786.35
300 <u>Purchased Professional and Technical Services</u>				
322 Professional Educational Services – Ius	25,173.75	16,782.50		41,956.25
Total Purchased Professional and Technical Services	\$25,173.75	\$16,782.50		\$41,956.25
500 <u>Other Purchased Services</u>				
580 Travel	31.61	21.08		52.69
Total Other Purchased Services	\$31.61	\$21.08		\$52.69
600 <u>Supplies</u>				
610 General Supplies	5,048.80	3,365.86		8,414.66
Total Supplies	\$5,048.80	\$3,365.86		\$8,414.66
800 <u>Other Objects</u>				
810 Dues and Fees			506.00	506.00
Total Other Objects			\$506.00	\$506.00
Total 2150 Speech Pathology and Audiology Services	\$416,661.31	\$277,774.22	\$506.00	\$694,941.53

LEA : 123466403 Pottstown SD

Printed 12/22/2022 12:13:10 PM

General Fund (10)

2160 Social Work Services

Elementary Secondary Federal Total

100 <u>Personnel Services – Salaries</u>				
100 Personnel Services – Salaries				97,189.27
Total Personnel Services – Salaries				\$97,189.27
200 <u>Personnel Services – Employee Benefits</u>				
210 Group Insurance – Contracted Provider				29,052.10
220 Social Security Contributions				7,190.52
230 PSERS Retirement Contributions				33,859.44
Total Personnel Services – Employee Benefits				\$70,102.06
Total 2160 Social Work Services				\$167,291.33

LEA : 123466403 Pottstown SD

Printed 12/22/2022 12:13:10 PM

General Fund (10)

2170 Student Accounting Services	<u>Elementary</u>	<u>Secondary</u>	<u>Federal</u>	<u>Total</u>
100 <u>Personnel Services – Salaries</u>				
100 Personnel Services – Salaries				50,216.92
Total Personnel Services – Salaries				\$50,216.92
200 <u>Personnel Services – Employee Benefits</u>				
210 Group Insurance – Contracted Provider				14,564.40
220 Social Security Contributions				3,657.94
230 PSERS Retirement Contributions				17,545.84
Total Personnel Services – Employee Benefits				\$35,768.18
300 <u>Purchased Professional and Technical Services</u>				
390 Other Purchased Professional and Technical Services				1,119.00
Total Purchased Professional and Technical Services				\$1,119.00
500 <u>Other Purchased Services</u>				
580 Travel				999.00
Total Other Purchased Services				\$999.00
600 <u>Supplies</u>				
610 General Supplies				9,500.00
Total Supplies				\$9,500.00
800 <u>Other Objects</u>				
810 Dues and Fees				160.00
Total Other Objects				\$160.00
Total 2170 Student Accounting Services				\$97,763.10

LEA : 123466403 Pottstown SD

Printed 12/22/2022 12:13:10 PM

General Fund (10)

2200 Support Services – Instructional Staff	<u>Elementary</u>	<u>Secondary</u>	<u>Federal</u>	<u>Total</u>
100 <u>Personnel Services – Salaries</u>				
100 Personnel Services – Salaries	512,466.29	341,644.17	107,238.81	961,349.27
Total Personnel Services – Salaries	\$512,466.29	\$341,644.17	\$107,238.81	\$961,349.27
200 <u>Personnel Services – Employee Benefits</u>				
210 Group Insurance – Contracted Provider	113,864.38	75,909.59	1,984.71	191,758.68
220 Social Security Contributions	37,477.31	24,984.89	8,203.75	70,665.95
230 PSERS Retirement Contributions	195,279.07	130,186.07	11,170.05	336,635.19
240 Tuition Reimbursement	32,163.62	21,442.41		53,606.03
299 All Other Employee Benefits	799.20	532.80		1,332.00
Total Personnel Services – Employee Benefits	\$379,583.58	\$253,055.76	\$21,358.51	\$653,997.85
300 <u>Purchased Professional and Technical Services</u>				
322 Professional Educational Services – lus	59,436.00	39,624.00	55,039.94	154,099.94
360 Employee Training and Development Services	22,199.40	14,799.60	24,760.03	61,759.03
390 Other Purchased Professional and Technical Services	1,870.20	1,246.80		3,117.00
Total Purchased Professional and Technical Services	\$83,505.60	\$55,670.40	\$79,799.97	\$218,975.97
400 <u>Purchased Property Services</u>				
430 Repairs and Maintenance Services	19,383.15	12,922.10	19,200.00	51,505.25
440 Rentals	1,659.23	1,106.15		2,765.38
Total Purchased Property Services	\$21,042.38	\$14,028.25	\$19,200.00	\$54,270.63
500 <u>Other Purchased Services</u>				
530 Communications	2,823.74	1,882.49	8,665.67	13,371.90
580 Travel	1,444.33	962.89	1,124.61	3,531.83
Total Other Purchased Services	\$4,268.07	\$2,845.38	\$9,790.28	\$16,903.73
600 <u>Supplies</u>				
610 General Supplies	39,856.80	26,571.19	38,469.84	104,897.83
640 Books and Periodicals	19,197.90	12,798.59	982.80	32,979.29
650 Supplies & Fees – Technology Related	400,734.28	267,156.19	274,806.09	942,696.56
Total Supplies	\$459,788.98	\$306,525.97	\$314,258.73	\$1,080,573.68
700 <u>Property</u>				
790 Other Property	6,283.55	4,189.03		10,472.58
Total Property	\$6,283.55	\$4,189.03		\$10,472.58
800 <u>Other Objects</u>				
810 Dues and Fees	450.00	300.00		750.00
Total Other Objects	\$450.00	\$300.00		\$750.00
Total 2200 Support Services – Instructional Staff	\$1,467,388.45	\$978,258.96	\$551,646.30	\$2,997,293.71

LEA : 123466403 Pottstown SD

Printed 12/22/2022 12:13:10 PM

General Fund (10)

2210 Supervision of Educational Media Services	<u>Elementary</u>	<u>Secondary</u>	<u>Federal</u>	<u>Total</u>
100 <u>Personnel Services – Salaries</u>				
100 Personnel Services – Salaries	42,646.12	28,430.74		71,076.86
Total Personnel Services – Salaries	\$42,646.12	\$28,430.74		\$71,076.86
200 <u>Personnel Services – Employee Benefits</u>				
210 Group Insurance – Contracted Provider	10,867.69	7,245.13		18,112.82
220 Social Security Contributions	3,301.27	2,200.85		5,502.12
230 PSERS Retirement Contributions	15,423.59	10,282.40		25,705.99
Total Personnel Services – Employee Benefits	\$29,592.55	\$19,728.38		\$49,320.93
300 <u>Purchased Professional and Technical Services</u>				
322 Professional Educational Services – Ius	57,276.00	38,184.00		95,460.00
Total Purchased Professional and Technical Services	\$57,276.00	\$38,184.00		\$95,460.00
500 <u>Other Purchased Services</u>				
530 Communications	2,462.36	1,641.57		4,103.93
Total Other Purchased Services	\$2,462.36	\$1,641.57		\$4,103.93
Total 2210 Supervision of Educational Media Services	\$131,977.03	\$87,984.69		\$219,961.72

LEA : 123466403 Pottstown SD

Printed 12/22/2022 12:13:10 PM

General Fund (10)

2211 Supervision of Educational Media Services – Head of Component	<u>Elementary</u>	<u>Secondary</u>	<u>Federal</u>	<u>Total</u>
100 <u>Personnel Services – Salaries</u>				
100 Personnel Services – Salaries	42,646.12	28,430.74		71,076.86
Total Personnel Services – Salaries	\$42,646.12	\$28,430.74		\$71,076.86
200 <u>Personnel Services – Employee Benefits</u>				
210 Group Insurance – Contracted Provider	10,867.69	7,245.13		18,112.82
220 Social Security Contributions	3,301.27	2,200.85		5,502.12
230 PSERS Retirement Contributions	15,423.59	10,282.40		25,705.99
Total Personnel Services – Employee Benefits	\$29,592.55	\$19,728.38		\$49,320.93
300 <u>Purchased Professional and Technical Services</u>				
322 Professional Educational Services – Ius	57,276.00	38,184.00		95,460.00
Total Purchased Professional and Technical Services	\$57,276.00	\$38,184.00		\$95,460.00
500 <u>Other Purchased Services</u>				
530 Communications	2,462.36	1,641.57		4,103.93
Total Other Purchased Services	\$2,462.36	\$1,641.57		\$4,103.93
Total 2211 Supervision of Educational Media Services – Head of Component	\$131,977.03	\$87,984.69		\$219,961.72

LEA : 123466403 Pottstown SD

Printed 12/22/2022 12:13:10 PM

General Fund (10)

2220 Technology Support Services	Elementary	Secondary	Federal	Total
100 <u>Personnel Services – Salaries</u>				
100 Personnel Services – Salaries	130,781.50	87,187.66		217,969.16
Total Personnel Services – Salaries	\$130,781.50	\$87,187.66		\$217,969.16
200 <u>Personnel Services – Employee Benefits</u>				
210 Group Insurance – Contracted Provider	42,699.73	28,466.49		71,166.22
220 Social Security Contributions	9,388.04	6,258.70		15,646.74
230 PSERS Retirement Contributions	45,681.23	30,454.16		76,135.39
Total Personnel Services – Employee Benefits	\$97,769.00	\$65,179.35		\$162,948.35
500 <u>Other Purchased Services</u>				
530 Communications			8,489.51	8,489.51
580 Travel	1,444.33	962.89		2,407.22
Total Other Purchased Services	\$1,444.33	\$962.89	\$8,489.51	\$10,896.73
600 <u>Supplies</u>				
610 General Supplies	7,376.40	4,917.60	38,469.84	50,763.84
650 Supplies & Fees – Technology Related			125,625.84	125,625.84
Total Supplies	\$7,376.40	\$4,917.60	\$164,095.68	\$176,389.68
Total 2220 Technology Support Services	\$237,371.23	\$158,247.50	\$172,585.19	\$568,203.92

LEA : 123466403 Pottstown SD

Printed 12/22/2022 12:13:10 PM

General Fund (10)

2240 Computer-Assisted Instruction Support Services	<u>Elementary</u>	<u>Secondary</u>	<u>Federal</u>	<u>Total</u>
300 <u>Purchased Professional and Technical Services</u>				
390 Other Purchased Professional and Technical Services	1,151.40	767.60		1,919.00
Total Purchased Professional and Technical Services	\$1,151.40	\$767.60		\$1,919.00
400 <u>Purchased Property Services</u>				
430 Repairs and Maintenance Services	19,383.15	12,922.10	19,200.00	51,505.25
440 Rentals	1,659.23	1,106.15		2,765.38
Total Purchased Property Services	\$21,042.38	\$14,028.25	\$19,200.00	\$54,270.63
600 <u>Supplies</u>				
610 General Supplies	27,236.95	18,157.96		45,394.91
650 Supplies & Fees – Technology Related	400,734.28	267,156.19	149,180.25	817,070.72
Total Supplies	\$427,971.23	\$285,314.15	\$149,180.25	\$862,465.63
700 <u>Property</u>				
790 Other Property	6,283.55	4,189.03		10,472.58
Total Property	\$6,283.55	\$4,189.03		\$10,472.58
Total 2240 Computer-Assisted Instruction Support Services	\$456,448.56	\$304,299.03	\$168,380.25	\$929,127.84

LEA : 123466403 Pottstown SD

Printed 12/22/2022 12:13:10 PM

General Fund (10)

2250 School Library Services	<u>Elementary</u>	<u>Secondary</u>	<u>Federal</u>	<u>Total</u>
100 <u>Personnel Services – Salaries</u>				
100 Personnel Services – Salaries	185,823.58	123,882.38		309,705.96
Total Personnel Services – Salaries	\$185,823.58	\$123,882.38		\$309,705.96
200 <u>Personnel Services – Employee Benefits</u>				
210 Group Insurance – Contracted Provider	41,536.45	27,690.97		69,227.42
220 Social Security Contributions	13,377.78	8,918.52		22,296.30
230 PSERS Retirement Contributions	64,536.50	43,024.34		107,560.84
Total Personnel Services – Employee Benefits	\$119,450.73	\$79,633.83		\$199,084.56
600 <u>Supplies</u>				
610 General Supplies	2,143.37	1,428.91		3,572.28
640 Books and Periodicals	3,602.92	2,401.94		6,004.86
Total Supplies	\$5,746.29	\$3,830.85		\$9,577.14
Total 2250 School Library Services	\$311,020.60	\$207,347.06		\$518,367.66

LEA : 123466403 Pottstown SD

Printed 12/22/2022 12:13:10 PM

General Fund (10)

2260 Instruction and Curriculum Development Services	<u>Elementary</u>	<u>Secondary</u>	<u>Federal</u>	<u>Total</u>
100 <u>Personnel Services – Salaries</u>				
100 Personnel Services – Salaries	137,563.19	91,708.79	63,000.00	292,271.98
Total Personnel Services – Salaries	\$137,563.19	\$91,708.79	\$63,000.00	\$292,271.98
200 <u>Personnel Services – Employee Benefits</u>				
210 Group Insurance – Contracted Provider	18,760.51	12,507.00		31,267.51
220 Social Security Contributions	10,212.87	6,808.58	4,819.50	21,840.95
230 PSERS Retirement Contributions	57,850.58	38,567.06	6,595.15	103,012.79
299 All Other Employee Benefits	799.20	532.80		1,332.00
Total Personnel Services – Employee Benefits	\$87,623.16	\$58,415.44	\$11,414.65	\$157,453.25
300 <u>Purchased Professional and Technical Services</u>				
322 Professional Educational Services – Ius			55,039.94	55,039.94
390 Other Purchased Professional and Technical Services	718.80	479.20		1,198.00
Total Purchased Professional and Technical Services	\$718.80	\$479.20	\$55,039.94	\$56,237.94
500 <u>Other Purchased Services</u>				
530 Communications	361.38	240.92		602.30
Total Other Purchased Services	\$361.38	\$240.92		\$602.30
600 <u>Supplies</u>				
610 General Supplies	3,100.08	2,066.72		5,166.80
640 Books and Periodicals	15,594.98	10,396.65	982.80	26,974.43
Total Supplies	\$18,695.06	\$12,463.37	\$982.80	\$32,141.23
800 <u>Other Objects</u>				
810 Dues and Fees	450.00	300.00		750.00
Total Other Objects	\$450.00	\$300.00		\$750.00
Total 2260 Instruction and Curriculum Development Services	\$245,411.59	\$163,607.72	\$130,437.39	\$539,456.70

LEA : 123466403 Pottstown SD

Printed 12/22/2022 12:13:10 PM

General Fund (10)				
2270 Instructional Staff Professional Development Services	<u>Elementary</u>	<u>Secondary</u>	<u>Federal</u>	<u>Total</u>
100 <u>Personnel Services – Salaries</u>				
100 Personnel Services – Salaries			44,238.81	44,238.81
Total Personnel Services – Salaries			\$44,238.81	\$44,238.81
200 <u>Personnel Services – Employee Benefits</u>				
210 Group Insurance – Contracted Provider			1,984.71	1,984.71
220 Social Security Contributions			3,384.25	3,384.25
230 PSERS Retirement Contributions	6,404.98	4,269.99	4,574.90	15,249.87
240 Tuition Reimbursement	32,163.62	21,442.41		53,606.03
Total Personnel Services – Employee Benefits	\$38,568.60	\$25,712.40	\$9,943.86	\$74,224.86
300 <u>Purchased Professional and Technical Services</u>				
322 Professional Educational Services – Ius	2,160.00	1,440.00		3,600.00
360 Employee Training and Development Services	22,199.40	14,799.60	24,760.03	61,759.03
Total Purchased Professional and Technical Services	\$24,359.40	\$16,239.60	\$24,760.03	\$65,359.03
500 <u>Other Purchased Services</u>				
530 Communications			176.16	176.16
580 Travel			1,124.61	1,124.61
Total Other Purchased Services			\$1,300.77	\$1,300.77
Total 2270 Instructional Staff Professional Development Services	\$62,928.00	\$41,952.00	\$80,243.47	\$185,123.47

LEA : 123466403 Pottstown SD

Printed 12/22/2022 12:13:10 PM

General Fund (10)

2290 Other Instructional Staff Services	<u>Elementary</u>	<u>Secondary</u>	<u>Federal</u>	<u>Total</u>
100 <u>Personnel Services – Salaries</u>				
100 Personnel Services – Salaries	15,651.90	10,434.60		26,086.50
Total Personnel Services – Salaries	\$15,651.90	\$10,434.60		\$26,086.50
200 <u>Personnel Services – Employee Benefits</u>				
220 Social Security Contributions	1,197.35	798.24		1,995.59
230 PSERS Retirement Contributions	5,382.19	3,588.12		8,970.31
Total Personnel Services – Employee Benefits	\$6,579.54	\$4,386.36		\$10,965.90
Total 2290 Other Instructional Staff Services	\$22,231.44	\$14,820.96		\$37,052.40

LEA : 123466403 Pottstown SD

Printed 12/22/2022 12:13:10 PM

General Fund (10)				
2300 Support Services – Administration	<u>Elementary</u>	<u>Secondary</u>	<u>Federal</u>	<u>Total</u>
100 <u>Personnel Services – Salaries</u>				
100 Personnel Services – Salaries	783,664.70	522,443.14		1,658,432.81
Total Personnel Services – Salaries	\$783,664.70	\$522,443.14		\$1,658,432.81
200 <u>Personnel Services – Employee Benefits</u>				
210 Group Insurance – Contracted Provider	164,922.53	109,948.35		342,917.88
220 Social Security Contributions	58,058.27	38,705.51		120,273.11
230 PSERS Retirement Contributions	272,592.55	181,728.37		574,289.09
250 Unemployment Compensation	26.50	17.67		44.17
280 Other Post-Employment Benefits (OPEB)				14,703.60
299 All Other Employee Benefits	4,816.25	3,210.84		22,717.09
Total Personnel Services – Employee Benefits	\$500,416.10	\$333,610.74		\$1,074,944.94
300 <u>Purchased Professional and Technical Services</u>				
329 Professional Educational Services – Other	5,670.68	3,780.45		9,451.13
330 Other Professional Services	17,718.93	11,812.62		407,820.68
390 Other Purchased Professional and Technical Services				66,227.17
Total Purchased Professional and Technical Services	\$23,389.61	\$15,593.07		\$483,498.98
400 <u>Purchased Property Services</u>				
440 Rentals	12,649.42	8,432.94		28,489.81
Total Purchased Property Services	\$12,649.42	\$8,432.94		\$28,489.81
500 <u>Other Purchased Services</u>				
520 Insurance – General				263,054.00
530 Communications	6,157.80	4,105.20		11,338.14
549 Other Advertising/Public Relations				4,606.30
580 Travel	1,537.05	1,024.70		3,644.62
Total Other Purchased Services	\$7,694.85	\$5,129.90		\$282,643.06
600 <u>Supplies</u>				
610 General Supplies	73,500.36	49,000.24		164,123.41
650 Supplies & Fees – Technology Related				43,712.39
Total Supplies	\$73,500.36	\$49,000.24		\$207,835.80
800 <u>Other Objects</u>				
810 Dues and Fees	1,845.60	1,230.40		31,579.07
Total Other Objects	\$1,845.60	\$1,230.40		\$31,579.07
Total 2300 Support Services – Administration	\$1,403,160.64	\$935,440.43		\$3,767,424.47

LEA : 123466403 Pottstown SD

Printed 12/22/2022 12:13:10 PM

General Fund (10)				
2310 Board Services	<u>Elementary</u>	<u>Secondary</u>	<u>Federal</u>	<u>Total</u>
300 <u>Purchased Professional and Technical Services</u>				
330 Other Professional Services				69,061.79
Total Purchased Professional and Technical Services				\$69,061.79
500 <u>Other Purchased Services</u>				
520 Insurance – General				263,054.00
549 Other Advertising/Public Relations				4,606.30
Total Other Purchased Services				\$267,660.30
600 <u>Supplies</u>				
610 General Supplies				2,700.00
Total Supplies				\$2,700.00
800 <u>Other Objects</u>				
810 Dues and Fees				24,555.77
Total Other Objects				\$24,555.77
Total 2310 Board Services				\$363,977.86

LEA : 123466403 Pottstown SD

Printed 12/22/2022 12:13:10 PM

General Fund (10)

2330 Tax Assessment and Collection Services	<u>Elementary</u>	<u>Secondary</u>	<u>Federal</u>	<u>Total</u>
300 <u>Purchased Professional and Technical Services</u>				
330 Other Professional Services				261,759.45
390 Other Purchased Professional and Technical Services				66,227.17
Total Purchased Professional and Technical Services				\$327,986.62
400 <u>Purchased Property Services</u>				
440 Rentals				7,407.45
Total Purchased Property Services				\$7,407.45
Total 2330 Tax Assessment and Collection Services				\$335,394.07

LEA : 123466403 Pottstown SD

Printed 12/22/2022 12:13:10 PM

General Fund (10)

2340 Staff Relations and Negotiations Services	<u>Elementary</u>	<u>Secondary</u>	<u>Federal</u>	<u>Total</u>
100 <u>Personnel Services – Salaries</u>				
100 Personnel Services – Salaries				63,024.74
Total Personnel Services – Salaries				\$63,024.74
200 <u>Personnel Services – Employee Benefits</u>				
210 Group Insurance – Contracted Provider				20,602.73
220 Social Security Contributions				4,948.34
230 PSERS Retirement Contributions				23,560.29
Total Personnel Services – Employee Benefits				\$49,111.36
300 <u>Purchased Professional and Technical Services</u>				
330 Other Professional Services				43,368.89
Total Purchased Professional and Technical Services				\$43,368.89
500 <u>Other Purchased Services</u>				
530 Communications				205.51
Total Other Purchased Services				\$205.51
600 <u>Supplies</u>				
610 General Supplies				9,059.08
650 Supplies & Fees – Technology Related				42,105.39
Total Supplies				\$51,164.47
800 <u>Other Objects</u>				
810 Dues and Fees				3,652.30
Total Other Objects				\$3,652.30
Total 2340 Staff Relations and Negotiations Services				\$210,527.27

LEA : 123466403 Pottstown SD

Printed 12/22/2022 12:13:10 PM

General Fund (10)

2350 Legal and Accounting Services	<u>Elementary</u>	<u>Secondary</u>	<u>Federal</u>	<u>Total</u>
300 <u>Purchased Professional and Technical Services</u>				
330 Other Professional Services				2,760.00
Total Purchased Professional and Technical Services				\$2,760.00
Total 2350 Legal and Accounting Services				\$2,760.00

LEA : 123466403 Pottstown SD

Printed 12/22/2022 12:13:10 PM

General Fund (10)

2360 Office of the Superintendent / Executive Director Services	<u>Elementary</u>	<u>Secondary</u>	<u>Federal</u>	<u>Total</u>
100 <u>Personnel Services – Salaries</u>				
100 Personnel Services – Salaries				267,376.42
Total Personnel Services – Salaries				\$267,376.42
200 <u>Personnel Services – Employee Benefits</u>				
210 Group Insurance – Contracted Provider				41,700.68
220 Social Security Contributions				16,941.65
230 PSERS Retirement Contributions				88,731.58
280 Other Post-Employment Benefits (OPEB)				14,703.60
299 All Other Employee Benefits				14,690.00
Total Personnel Services – Employee Benefits				\$176,767.51
300 <u>Purchased Professional and Technical Services</u>				
330 Other Professional Services				1,339.00
Total Purchased Professional and Technical Services				\$1,339.00
500 <u>Other Purchased Services</u>				
530 Communications	1,057.79	705.20		1,762.99
580 Travel				1,028.87
Total Other Purchased Services	\$1,057.79	\$705.20		\$2,791.86
600 <u>Supplies</u>				
610 General Supplies				29,727.59
650 Supplies & Fees – Technology Related				1,607.00
Total Supplies				\$31,334.59
Total 2360 Office of the Superintendent / Executive Director Services	\$1,057.79	\$705.20		\$479,609.38

LEA : 123466403 Pottstown SD

Printed 12/22/2022 12:13:10 PM

General Fund (10)

2370 Community Relations Services	<u>Elementary</u>	<u>Secondary</u>	<u>Federal</u>	<u>Total</u>
100 <u>Personnel Services – Salaries</u>				
100 Personnel Services – Salaries				21,923.81
Total Personnel Services – Salaries				\$21,923.81
200 <u>Personnel Services – Employee Benefits</u>				
210 Group Insurance – Contracted Provider				5,743.59
220 Social Security Contributions				1,619.34
230 PSERS Retirement Contributions				7,676.30
Total Personnel Services – Employee Benefits				\$15,039.23
500 <u>Other Purchased Services</u>				
530 Communications				869.63
580 Travel				54.00
Total Other Purchased Services				\$923.63
600 <u>Supplies</u>				
610 General Supplies				136.14
Total Supplies				\$136.14
800 <u>Other Objects</u>				
810 Dues and Fees				295.00
Total Other Objects				\$295.00
Total 2370 Community Relations Services				\$38,317.81

LEA : 123466403 Pottstown SD

Printed 12/22/2022 12:13:10 PM

General Fund (10)				
2380 Office of the Principal Services	<u>Elementary</u>	<u>Secondary</u>	<u>Federal</u>	<u>Total</u>
100 <u>Personnel Services – Salaries</u>				
100 Personnel Services – Salaries	783,664.70	522,443.14		1,306,107.84
Total Personnel Services – Salaries	\$783,664.70	\$522,443.14		\$1,306,107.84
200 <u>Personnel Services – Employee Benefits</u>				
210 Group Insurance – Contracted Provider	164,922.53	109,948.35		274,870.88
220 Social Security Contributions	58,058.27	38,705.51		96,763.78
230 PSERS Retirement Contributions	272,592.55	181,728.37		454,320.92
250 Unemployment Compensation	26.50	17.67		44.17
299 All Other Employee Benefits	4,816.25	3,210.84		8,027.09
Total Personnel Services – Employee Benefits	\$500,416.10	\$333,610.74		\$834,026.84
300 <u>Purchased Professional and Technical Services</u>				
329 Professional Educational Services – Other	5,670.68	3,780.45		9,451.13
330 Other Professional Services	17,718.93	11,812.62		29,531.55
Total Purchased Professional and Technical Services	\$23,389.61	\$15,593.07		\$38,982.68
400 <u>Purchased Property Services</u>				
440 Rentals	12,649.42	8,432.94		21,082.36
Total Purchased Property Services	\$12,649.42	\$8,432.94		\$21,082.36
500 <u>Other Purchased Services</u>				
530 Communications	5,100.01	3,400.00		8,500.01
580 Travel	1,537.05	1,024.70		2,561.75
Total Other Purchased Services	\$6,637.06	\$4,424.70		\$11,061.76
600 <u>Supplies</u>				
610 General Supplies	73,500.36	49,000.24		122,500.60
Total Supplies	\$73,500.36	\$49,000.24		\$122,500.60
800 <u>Other Objects</u>				
810 Dues and Fees	1,845.60	1,230.40		3,076.00
Total Other Objects	\$1,845.60	\$1,230.40		\$3,076.00
Total 2380 Office of the Principal Services	\$1,402,102.85	\$934,735.23		\$2,336,838.08

LEA : 123466403 Pottstown SD

Printed 12/22/2022 12:13:10 PM

General Fund (10)

2400 Support Services – Pupil Health	<u>Elementary</u>	<u>Secondary</u>	<u>Federal</u>	<u>Total</u>
100 <u>Personnel Services – Salaries</u>				
100 Personnel Services – Salaries			134,520.28	589,130.96
Total Personnel Services – Salaries			\$134,520.28	\$589,130.96
200 <u>Personnel Services – Employee Benefits</u>				
210 Group Insurance – Contracted Provider			20,950.54	82,430.70
220 Social Security Contributions			10,076.72	43,575.19
230 PSERS Retirement Contributions			27,779.54	201,343.43
250 Unemployment Compensation				209.81
Total Personnel Services – Employee Benefits			\$58,806.80	\$327,559.13
300 <u>Purchased Professional and Technical Services</u>				
329 Professional Educational Services – Other				16,316.60
330 Other Professional Services				372,237.44
390 Other Purchased Professional and Technical Services				3,221.10
Total Purchased Professional and Technical Services				\$391,775.14
500 <u>Other Purchased Services</u>				
530 Communications				620.26
580 Travel				58.58
Total Other Purchased Services				\$678.84
600 <u>Supplies</u>				
610 General Supplies			84.42	30,644.01
Total Supplies			\$84.42	\$30,644.01
Total 2400 Support Services – Pupil Health			\$193,411.50	\$1,339,788.08

LEA : 123466403 Pottstown SD

Printed 12/22/2022 12:13:10 PM

General Fund (10)				
2420 Medical Services				
	<u>Elementary</u>	<u>Secondary</u>	<u>Federal</u>	<u>Total</u>
100 <u>Personnel Services – Salaries</u>				
100 Personnel Services – Salaries			134,520.28	321,943.74
Total Personnel Services – Salaries			\$134,520.28	\$321,943.74
200 <u>Personnel Services – Employee Benefits</u>				
210 Group Insurance – Contracted Provider			20,950.54	75,153.06
220 Social Security Contributions			10,076.72	23,208.44
230 PSERS Retirement Contributions			27,779.54	112,318.54
Total Personnel Services – Employee Benefits			\$58,806.80	\$210,680.04
300 <u>Purchased Professional and Technical Services</u>				
329 Professional Educational Services – Other				16,316.60
330 Other Professional Services				193,439.08
390 Other Purchased Professional and Technical Services				1,380.00
Total Purchased Professional and Technical Services				\$211,135.68
500 <u>Other Purchased Services</u>				
530 Communications				620.26
580 Travel				58.58
Total Other Purchased Services				\$678.84
600 <u>Supplies</u>				
610 General Supplies				29,042.93
Total Supplies				\$29,042.93
Total 2420 Medical Services			\$193,327.08	\$773,481.23

LEA : 123466403 Pottstown SD

Printed 12/22/2022 12:13:10 PM

General Fund (10)

2430 Dental Services

	<u>Elementary</u>	<u>Secondary</u>	<u>Federal</u>	<u>Total</u>
300 <u>Purchased Professional and Technical Services</u>				
330 Other Professional Services				2,406.50
Total Purchased Professional and Technical Services				\$2,406.50
Total 2430 Dental Services				\$2,406.50

LEA : 123466403 Pottstown SD

Printed 12/22/2022 12:13:10 PM

General Fund (10)

2440 Nursing Services	<u>Elementary</u>	<u>Secondary</u>	<u>Federal</u>	<u>Total</u>
100 <u>Personnel Services – Salaries</u>				
100 Personnel Services – Salaries				267,187.22
Total Personnel Services – Salaries				\$267,187.22
200 <u>Personnel Services – Employee Benefits</u>				
210 Group Insurance – Contracted Provider				7,277.64
220 Social Security Contributions				20,366.75
230 PSERS Retirement Contributions				89,024.89
250 Unemployment Compensation				209.81
Total Personnel Services – Employee Benefits				\$116,879.09
300 <u>Purchased Professional and Technical Services</u>				
330 Other Professional Services				176,391.86
Total Purchased Professional and Technical Services				\$176,391.86
600 <u>Supplies</u>				
610 General Supplies				1,516.66
Total Supplies				\$1,516.66
Total 2440 Nursing Services				\$561,974.83

LEA : 123466403 Pottstown SD

Printed 12/22/2022 12:13:10 PM

General Fund (10)

2490 Other Health Services	<u>Elementary</u>	<u>Secondary</u>	<u>Federal</u>	<u>Total</u>
300 <u>Purchased Professional and Technical Services</u>				
390 Other Purchased Professional and Technical Services				1,841.10
Total Purchased Professional and Technical Services				\$1,841.10
600 <u>Supplies</u>				
610 General Supplies			84.42	84.42
Total Supplies			\$84.42	\$84.42
Total 2490 Other Health Services			\$84.42	\$1,925.52

LEA : 123466403 Pottstown SD

Printed 12/22/2022 12:13:10 PM

General Fund (10)					
2500 Support Services – Business		<u>Elementary</u>	<u>Secondary</u>	<u>Federal</u>	<u>Total</u>
100 <u>Personnel Services – Salaries</u>					
100 Personnel Services – Salaries				30,135.33	433,603.75
Total Personnel Services – Salaries				\$30,135.33	\$433,603.75
200 <u>Personnel Services – Employee Benefits</u>					
210 Group Insurance – Contracted Provider				7,996.09	84,186.96
220 Social Security Contributions				2,244.90	33,313.33
230 PSERS Retirement Contributions				2,925.06	156,661.25
299 All Other Employee Benefits					21,700.00
Total Personnel Services – Employee Benefits				\$13,166.05	\$295,861.54
300 <u>Purchased Professional and Technical Services</u>					
329 Professional Educational Services – Other					25,196.34
330 Other Professional Services				5,200.00	48,393.50
390 Other Purchased Professional and Technical Services				1,098.00	25,992.05
Total Purchased Professional and Technical Services				\$6,298.00	\$99,581.89
400 <u>Purchased Property Services</u>					
440 Rentals					5,992.12
Total Purchased Property Services					\$5,992.12
500 <u>Other Purchased Services</u>					
520 Insurance – General					4,683.24
530 Communications					11,874.18
580 Travel					1,683.30
Total Other Purchased Services					\$18,240.72
600 <u>Supplies</u>					
610 General Supplies					12,516.47
650 Supplies & Fees – Technology Related					8,878.49
Total Supplies					\$21,394.96
800 <u>Other Objects</u>					
810 Dues and Fees					4,530.63
890 Miscellaneous Expenditures					373.18
Total Other Objects					\$4,903.81
Total 2500 Support Services – Business				\$49,599.38	\$879,578.79

LEA : 123466403 Pottstown SD

Printed 12/22/2022 12:13:10 PM

General Fund (10)				
2510 Fiscal Services	<u>Elementary</u>	<u>Secondary</u>	<u>Federal</u>	<u>Total</u>
100 <u>Personnel Services – Salaries</u>				
100 Personnel Services – Salaries			30,135.33	433,603.75
Total Personnel Services – Salaries			\$30,135.33	\$433,603.75
200 <u>Personnel Services – Employee Benefits</u>				
210 Group Insurance – Contracted Provider			7,996.09	84,186.96
220 Social Security Contributions			2,244.90	33,313.33
230 PSERS Retirement Contributions			2,925.06	156,661.25
299 All Other Employee Benefits				21,700.00
Total Personnel Services – Employee Benefits			\$13,166.05	\$295,861.54
300 <u>Purchased Professional and Technical Services</u>				
329 Professional Educational Services – Other				109.00
330 Other Professional Services			5,200.00	48,393.50
390 Other Purchased Professional and Technical Services			1,098.00	25,992.05
Total Purchased Professional and Technical Services			\$6,298.00	\$74,494.55
400 <u>Purchased Property Services</u>				
440 Rentals				4,296.72
Total Purchased Property Services				\$4,296.72
500 <u>Other Purchased Services</u>				
520 Insurance – General				4,683.24
530 Communications				11,874.18
580 Travel				1,683.30
Total Other Purchased Services				\$18,240.72
600 <u>Supplies</u>				
610 General Supplies				3,239.87
650 Supplies & Fees – Technology Related				8,878.49
Total Supplies				\$12,118.36
800 <u>Other Objects</u>				
810 Dues and Fees				4,530.63
890 Miscellaneous Expenditures				373.18
Total Other Objects				\$4,903.81
Total 2510 Fiscal Services			\$49,599.38	\$843,519.45

LEA : 123466403 Pottstown SD

Printed 12/22/2022 12:13:10 PM

General Fund (10)

2511 Supervision of Fiscal Services - Head of Component	<u>Elementary</u>	<u>Secondary</u>	<u>Federal</u>	<u>Total</u>
100 <u>Personnel Services – Salaries</u>				
100 Personnel Services – Salaries				193,175.96
Total Personnel Services – Salaries				\$193,175.96
200 <u>Personnel Services – Employee Benefits</u>				
210 Group Insurance – Contracted Provider				24,478.39
220 Social Security Contributions				15,222.40
230 PSERS Retirement Contributions				71,164.39
299 All Other Employee Benefits				21,700.00
Total Personnel Services – Employee Benefits				\$132,565.18
300 <u>Purchased Professional and Technical Services</u>				
330 Other Professional Services			5,200.00	8,320.00
390 Other Purchased Professional and Technical Services			1,098.00	9,923.32
Total Purchased Professional and Technical Services			\$6,298.00	\$18,243.32
500 <u>Other Purchased Services</u>				
520 Insurance – General				258.00
Total Other Purchased Services				\$258.00
600 <u>Supplies</u>				
610 General Supplies				459.85
650 Supplies & Fees – Technology Related				4,069.05
Total Supplies				\$4,528.90
Total 2511 Supervision of Fiscal Services - Head of Component			\$6,298.00	\$348,771.36

LEA : 123466403 Pottstown SD

Printed 12/22/2022 12:13:10 PM

General Fund (10)

2512 Budgeting Services	<u>Elementary</u>	<u>Secondary</u>	<u>Federal</u>	<u>Total</u>
100 <u>Personnel Services – Salaries</u>				
100 Personnel Services – Salaries				86,060.39
Total Personnel Services – Salaries				\$86,060.39
200 <u>Personnel Services – Employee Benefits</u>				
210 Group Insurance – Contracted Provider				20,587.35
220 Social Security Contributions				6,314.49
230 PSERS Retirement Contributions				30,069.42
Total Personnel Services – Employee Benefits				\$56,971.26
300 <u>Purchased Professional and Technical Services</u>				
390 Other Purchased Professional and Technical Services				8,825.33
Total Purchased Professional and Technical Services				\$8,825.33
500 <u>Other Purchased Services</u>				
580 Travel				34.04
Total Other Purchased Services				\$34.04
600 <u>Supplies</u>				
610 General Supplies				67.49
Total Supplies				\$67.49
Total 2512 Budgeting Services				\$151,958.51

LEA : 123466403 Pottstown SD

Printed 12/22/2022 12:13:10 PM

General Fund (10)

2513 Receiving and Disbursing Funds Services	<u>Elementary</u>	<u>Secondary</u>	<u>Federal</u>	<u>Total</u>
100 <u>Personnel Services – Salaries</u>				
100 Personnel Services – Salaries				26,443.57
Total Personnel Services – Salaries				\$26,443.57
200 <u>Personnel Services – Employee Benefits</u>				
210 Group Insurance – Contracted Provider				8,849.24
220 Social Security Contributions				2,005.14
230 PSERS Retirement Contributions				9,487.63
Total Personnel Services – Employee Benefits				\$20,342.01
Total 2513 Receiving and Disbursing Funds Services				\$46,785.58

LEA : 123466403 Pottstown SD

Printed 12/22/2022 12:13:10 PM

General Fund (10)

2514 Payroll Services

	<u>Elementary</u>	<u>Secondary</u>	<u>Federal</u>	<u>Total</u>
100 <u>Personnel Services – Salaries</u>				
100 Personnel Services – Salaries			10,071.09	51,255.20
Total Personnel Services – Salaries			\$10,071.09	\$51,255.20
200 <u>Personnel Services – Employee Benefits</u>				
210 Group Insurance – Contracted Provider			2,734.83	15,092.72
220 Social Security Contributions			750.36	3,920.98
230 PSERS Retirement Contributions			1,055.60	18,452.34
Total Personnel Services – Employee Benefits			\$4,540.79	\$37,466.04
600 <u>Supplies</u>				
610 General Supplies				258.26
Total Supplies				\$258.26
Total 2514 Payroll Services			\$14,611.88	\$88,979.50

LEA : 123466403 Pottstown SD

Printed 12/22/2022 12:13:10 PM

General Fund (10)				
2515 Financial Accounting Services	<u>Elementary</u>	<u>Secondary</u>	<u>Federal</u>	<u>Total</u>
100 <u>Personnel Services – Salaries</u>				
100 Personnel Services – Salaries				56,604.39
Total Personnel Services – Salaries				\$56,604.39
200 <u>Personnel Services – Employee Benefits</u>				
210 Group Insurance – Contracted Provider			201.24	10,119.24
220 Social Security Contributions				4,355.78
230 PSERS Retirement Contributions				25,618.01
Total Personnel Services – Employee Benefits			\$201.24	\$40,093.03
300 <u>Purchased Professional and Technical Services</u>				
329 Professional Educational Services – Other				109.00
Total Purchased Professional and Technical Services				\$109.00
500 <u>Other Purchased Services</u>				
520 Insurance – General				4,425.24
Total Other Purchased Services				\$4,425.24
Total 2515 Financial Accounting Services			\$201.24	\$101,231.66

LEA : 123466403 Pottstown SD

Printed 12/22/2022 12:13:10 PM

General Fund (10)

2519 Other Fiscal Services

	<u>Elementary</u>	<u>Secondary</u>	<u>Federal</u>	<u>Total</u>
100 <u>Personnel Services – Salaries</u>				
100 Personnel Services – Salaries			20,064.24	20,064.24
Total Personnel Services – Salaries			\$20,064.24	\$20,064.24
200 <u>Personnel Services – Employee Benefits</u>				
210 Group Insurance – Contracted Provider			5,060.02	5,060.02
220 Social Security Contributions			1,494.54	1,494.54
230 PSERS Retirement Contributions			1,869.46	1,869.46
Total Personnel Services – Employee Benefits			\$8,424.02	\$8,424.02
300 <u>Purchased Professional and Technical Services</u>				
330 Other Professional Services				40,073.50
390 Other Purchased Professional and Technical Services				7,243.40
Total Purchased Professional and Technical Services				\$47,316.90
400 <u>Purchased Property Services</u>				
440 Rentals				4,296.72
Total Purchased Property Services				\$4,296.72
500 <u>Other Purchased Services</u>				
530 Communications				11,874.18
580 Travel				1,649.26
Total Other Purchased Services				\$13,523.44
600 <u>Supplies</u>				
610 General Supplies				2,454.27
650 Supplies & Fees – Technology Related				4,809.44
Total Supplies				\$7,263.71
800 <u>Other Objects</u>				
810 Dues and Fees				4,530.63
890 Miscellaneous Expenditures				373.18
Total Other Objects				\$4,903.81
Total 2519 Other Fiscal Services			\$28,488.26	\$105,792.84

LEA : 123466403 Pottstown SD

Printed 12/22/2022 12:13:10 PM

General Fund (10)				
2520 Purchasing Services	<u>Elementary</u>	<u>Secondary</u>	<u>Federal</u>	<u>Total</u>
600 <u>Supplies</u>				
610 General Supplies				900.12
Total Supplies				\$900.12
Total 2520 Purchasing Services				\$900.12

LEA : 123466403 Pottstown SD

Printed 12/22/2022 12:13:10 PM

General Fund (10)

2530 Warehousing and Distributing Services	<u>Elementary</u>	<u>Secondary</u>	<u>Federal</u>	<u>Total</u>
300 <u>Purchased Professional and Technical Services</u>				
329 Professional Educational Services – Other				25,087.34
Total Purchased Professional and Technical Services				\$25,087.34
Total 2530 Warehousing and Distributing Services				\$25,087.34

LEA : 123466403 Pottstown SD

Printed 12/22/2022 12:13:10 PM

General Fund (10)

2540 Printing, Publishing and Duplicating Services	<u>Elementary</u>	<u>Secondary</u>	<u>Federal</u>	<u>Total</u>
400 <u>Purchased Property Services</u>				
440 Rentals				1,695.40
Total Purchased Property Services				\$1,695.40
600 <u>Supplies</u>				
610 General Supplies				8,376.48
Total Supplies				\$8,376.48
Total 2540 Printing, Publishing and Duplicating Services				\$10,071.88

LEA : 123466403 Pottstown SD

Printed 12/22/2022 12:13:10 PM

General Fund (10)				
2600 Operation and Maintenance of Plant Services	<u>Elementary</u>	<u>Secondary</u>	<u>Federal</u>	<u>Total</u>
100 <u>Personnel Services – Salaries</u>				
100 Personnel Services – Salaries				1,717,574.92
Total Personnel Services – Salaries				\$1,717,574.92
200 <u>Personnel Services – Employee Benefits</u>				
210 Group Insurance – Contracted Provider				310,399.17
220 Social Security Contributions				127,092.09
230 PSERS Retirement Contributions				585,654.38
250 Unemployment Compensation				4,116.71
Total Personnel Services – Employee Benefits				\$1,027,262.35
300 <u>Purchased Professional and Technical Services</u>				
322 Professional Educational Services – Ius			26,583.46	26,583.46
330 Other Professional Services				65,170.50
350 Security / Safety Services				229,750.52
390 Other Purchased Professional and Technical Services				112,295.86
Total Purchased Professional and Technical Services			\$26,583.46	\$433,800.34
400 <u>Purchased Property Services</u>				
410 Cleaning Services				283,031.61
420 Utility Services				87,573.99
430 Repairs and Maintenance Services			9,336.71	703,712.74
440 Rentals				3,513.17
450 Construction Services			12,710.00	30,710.00
460 Extermination Services				9,445.03
Total Purchased Property Services			\$22,046.71	\$1,117,986.54
500 <u>Other Purchased Services</u>				
523 General Property and Liability Insurance				38,556.00
530 Communications				48,829.20
580 Travel				9.75
Total Other Purchased Services				\$87,394.95
600 <u>Supplies</u>				
610 General Supplies	389,528.08	259,685.39	33,862.34	683,075.81
620 Energy				579,820.25
650 Supplies & Fees – Technology Related				8,319.95
Total Supplies	\$389,528.08	\$259,685.39	\$33,862.34	\$1,271,216.01
700 <u>Property</u>				
752 Capital Equipment – Original and Additional			400,142.31	568,198.05
762 Capitalized Equipment - Replacement				78,960.00
Total Property			\$400,142.31	\$647,158.05
800 <u>Other Objects</u>				
810 Dues and Fees				840.59
Total Other Objects				\$840.59
Total 2600 Operation and Maintenance of Plant Services	\$389,528.08	\$259,685.39	\$482,634.82	\$6,303,233.75

LEA : 123466403 Pottstown SD

Printed 12/22/2022 12:13:10 PM

General Fund (10)

2610 Supervision of Operation and Maintenance of Plant Services	<u>Elementary</u>	<u>Secondary</u>	<u>Federal</u>	<u>Total</u>
100 <u>Personnel Services – Salaries</u>				
100 Personnel Services – Salaries				136,723.36
Total Personnel Services – Salaries				\$136,723.36
200 <u>Personnel Services – Employee Benefits</u>				
210 Group Insurance – Contracted Provider				29,285.43
220 Social Security Contributions				10,050.89
230 PSERS Retirement Contributions				47,771.30
Total Personnel Services – Employee Benefits				\$87,107.62
300 <u>Purchased Professional and Technical Services</u>				
390 Other Purchased Professional and Technical Services				75.00
Total Purchased Professional and Technical Services				\$75.00
500 <u>Other Purchased Services</u>				
523 General Property and Liability Insurance				38,556.00
Total Other Purchased Services				\$38,556.00
600 <u>Supplies</u>				
610 General Supplies	361.04	240.70		601.74
Total Supplies	\$361.04	\$240.70		\$601.74
800 <u>Other Objects</u>				
810 Dues and Fees				526.56
Total Other Objects				\$526.56
Total 2610 Supervision of Operation and Maintenance of Plant Services	\$361.04	\$240.70		\$263,590.28

LEA : 123466403 Pottstown SD

Printed 12/22/2022 12:13:10 PM

General Fund (10)

2611 Supervision of Operation and Maintenance of Plant Services – Head of Component	<u>Elementary</u>	<u>Secondary</u>	<u>Federal</u>	<u>Total</u>
100 <u>Personnel Services – Salaries</u>				
100 Personnel Services – Salaries				136,723.36
Total Personnel Services – Salaries				\$136,723.36
200 <u>Personnel Services – Employee Benefits</u>				
210 Group Insurance – Contracted Provider				29,285.43
220 Social Security Contributions				10,050.89
230 PSERS Retirement Contributions				47,771.30
Total Personnel Services – Employee Benefits				\$87,107.62
300 <u>Purchased Professional and Technical Services</u>				
390 Other Purchased Professional and Technical Services				75.00
Total Purchased Professional and Technical Services				\$75.00
500 <u>Other Purchased Services</u>				
523 General Property and Liability Insurance				38,556.00
Total Other Purchased Services				\$38,556.00
600 <u>Supplies</u>				
610 General Supplies	361.04	240.70		601.74
Total Supplies	\$361.04	\$240.70		\$601.74
800 <u>Other Objects</u>				
810 Dues and Fees				526.56
Total Other Objects				\$526.56
Total 2611 Supervision of Operation and Maintenance of Plant Services – Head of Component	\$361.04	\$240.70		\$263,590.28

LEA : 123466403 Pottstown SD

Printed 12/22/2022 12:13:10 PM

General Fund (10)				
2620 Operation of Buildings Services	<u>Elementary</u>	<u>Secondary</u>	<u>Federal</u>	<u>Total</u>
100 <u>Personnel Services – Salaries</u>				
100 Personnel Services – Salaries				1,273,547.55
Total Personnel Services – Salaries				\$1,273,547.55
200 <u>Personnel Services – Employee Benefits</u>				
210 Group Insurance – Contracted Provider				225,172.85
220 Social Security Contributions				94,189.55
230 PSERS Retirement Contributions				435,837.63
250 Unemployment Compensation				4,116.71
Total Personnel Services – Employee Benefits				\$759,316.74
300 <u>Purchased Professional and Technical Services</u>				
350 Security / Safety Services				37,168.56
390 Other Purchased Professional and Technical Services				112,095.86
Total Purchased Professional and Technical Services				\$149,264.42
400 <u>Purchased Property Services</u>				
410 Cleaning Services				66,727.34
420 Utility Services				87,573.99
430 Repairs and Maintenance Services			9,336.71	690,564.22
440 Rentals				2,294.43
450 Construction Services			12,710.00	30,710.00
460 Extermination Services				9,445.03
Total Purchased Property Services			\$22,046.71	\$887,315.01
500 <u>Other Purchased Services</u>				
530 Communications				48,829.20
580 Travel				9.75
Total Other Purchased Services				\$48,838.95
600 <u>Supplies</u>				
610 General Supplies	352,899.38	235,266.25	31,983.80	620,149.43
620 Energy				570,231.85
650 Supplies & Fees – Technology Related				5,534.95
Total Supplies	\$352,899.38	\$235,266.25	\$31,983.80	\$1,195,916.23
700 <u>Property</u>				
752 Capital Equipment – Original and Additional			386,324.00	554,379.74
762 Capitalized Equipment - Replacement				78,960.00
Total Property			\$386,324.00	\$633,339.74
800 <u>Other Objects</u>				
810 Dues and Fees				314.03
Total Other Objects				\$314.03
Total 2620 Operation of Buildings Services	\$352,899.38	\$235,266.25	\$440,354.51	\$4,947,852.67

LEA : 123466403 Pottstown SD

Printed 12/22/2022 12:13:10 PM

General Fund (10)

2630 Care and Upkeep of Grounds Services	<u>Elementary</u>	<u>Secondary</u>	<u>Federal</u>	<u>Total</u>
100 <u>Personnel Services – Salaries</u>				
100 Personnel Services – Salaries				107,996.30
Total Personnel Services – Salaries				\$107,996.30
200 <u>Personnel Services – Employee Benefits</u>				
210 Group Insurance – Contracted Provider				29,106.52
220 Social Security Contributions				7,924.75
230 PSERS Retirement Contributions				37,733.93
Total Personnel Services – Employee Benefits				\$74,765.20
400 <u>Purchased Property Services</u>				
410 Cleaning Services				216,304.27
430 Repairs and Maintenance Services				8,985.00
440 Rentals				1,218.74
Total Purchased Property Services				\$226,508.01
600 <u>Supplies</u>				
610 General Supplies	8,894.12	5,929.42		14,823.54
Total Supplies	\$8,894.12	\$5,929.42		\$14,823.54
Total 2630 Care and Upkeep of Grounds Services	\$8,894.12	\$5,929.42		\$424,093.05

LEA : 123466403 Pottstown SD

Printed 12/22/2022 12:13:10 PM

General Fund (10)

2650 Vehicle Operation and Maintenance Services (Other Than Student Transportation Vehicles)	<u>Elementary</u>	<u>Secondary</u>	<u>Federal</u>	<u>Total</u>
400 <u>Purchased Property Services</u>				
430 Repairs and Maintenance Services				4,163.52
Total Purchased Property Services				\$4,163.52
600 <u>Supplies</u>				
610 General Supplies	254.13	169.42		423.55
620 Energy				9,588.40
Total Supplies	\$254.13	\$169.42		\$10,011.95
Total 2650 Vehicle Operation and Maintenance Services (Other Than Student Transportation Vehicles)	\$254.13	\$169.42		\$14,175.47

LEA : 123466403 Pottstown SD

Printed 12/22/2022 12:13:10 PM

General Fund (10)				
2660 Safety and Security Services	<u>Elementary</u>	<u>Secondary</u>	<u>Federal</u>	<u>Total</u>
100 <u>Personnel Services – Salaries</u>				
100 Personnel Services – Salaries				199,307.71
Total Personnel Services – Salaries				\$199,307.71
200 <u>Personnel Services – Employee Benefits</u>				
210 Group Insurance – Contracted Provider				26,834.37
220 Social Security Contributions				14,926.90
230 PSERS Retirement Contributions				64,311.52
Total Personnel Services – Employee Benefits				\$106,072.79
300 <u>Purchased Professional and Technical Services</u>				
322 Professional Educational Services – Ius			26,583.46	26,583.46
330 Other Professional Services				65,170.50
350 Security / Safety Services				192,581.96
390 Other Purchased Professional and Technical Services				125.00
Total Purchased Professional and Technical Services			\$26,583.46	\$284,460.92
600 <u>Supplies</u>				
610 General Supplies	27,119.41	18,079.60	1,878.54	47,077.55
650 Supplies & Fees – Technology Related				2,785.00
Total Supplies	\$27,119.41	\$18,079.60	\$1,878.54	\$49,862.55
700 <u>Property</u>				
752 Capital Equipment – Original and Additional			13,818.31	13,818.31
Total Property			\$13,818.31	\$13,818.31
Total 2660 Safety and Security Services	\$27,119.41	\$18,079.60	\$42,280.31	\$653,522.28

LEA : 123466403 Pottstown SD

Printed 12/22/2022 12:13:10 PM

General Fund (10)

2700 Student Transportation Services	<u>Elementary</u>	<u>Secondary</u>	<u>Federal</u>	<u>Total</u>
300 <u>Purchased Professional and Technical Services</u>				
329 Professional Educational Services – Other				78,747.00
Total Purchased Professional and Technical Services				\$78,747.00
500 <u>Other Purchased Services</u>				
513 Contracted Carriers			21,479.06	1,806,238.63
516 Student Transportation Services From the IU				332,021.21
519 Student Transportation Services From Other Sources			25,508.56	25,508.56
522 Automotive Liability Insurance				10,441.00
Total Other Purchased Services			\$46,987.62	\$2,174,209.40
600 <u>Supplies</u>				
610 General Supplies			4,798.75	4,798.75
650 Supplies & Fees – Technology Related				5,850.00
Total Supplies			\$4,798.75	\$10,648.75
Total 2700 Student Transportation Services			\$51,786.37	\$2,263,605.15

LEA : 123466403 Pottstown SD

Printed 12/22/2022 12:13:10 PM

General Fund (10)

2710 Supervision of Student Transportation Services	<u>Elementary</u>	<u>Secondary</u>	<u>Federal</u>	<u>Total</u>
300 <u>Purchased Professional and Technical Services</u>				
329 Professional Educational Services – Other				78,747.00
Total Purchased Professional and Technical Services				\$78,747.00
500 <u>Other Purchased Services</u>				
513 Contracted Carriers			21,479.06	1,673,954.93
516 Student Transportation Services From the IU				332,021.21
519 Student Transportation Services From Other Sources			25,508.56	25,508.56
522 Automotive Liability Insurance				10,441.00
Total Other Purchased Services			\$46,987.62	\$2,041,925.70
600 <u>Supplies</u>				
610 General Supplies			4,798.75	4,798.75
650 Supplies & Fees – Technology Related				5,850.00
Total Supplies			\$4,798.75	\$10,648.75
Total 2710 Supervision of Student Transportation Services			\$51,786.37	\$2,131,321.45

LEA : 123466403 Pottstown SD

Printed 12/22/2022 12:13:10 PM

General Fund (10)

2719 Supervision of Student Transportation Services – All Other Supervision	<u>Elementary</u>	<u>Secondary</u>	<u>Federal</u>	<u>Total</u>
300 <u>Purchased Professional and Technical Services</u>				
329 Professional Educational Services – Other				78,747.00
Total Purchased Professional and Technical Services				\$78,747.00
500 <u>Other Purchased Services</u>				
513 Contracted Carriers			21,479.06	1,673,954.93
516 Student Transportation Services From the IU				332,021.21
519 Student Transportation Services From Other Sources			25,508.56	25,508.56
522 Automotive Liability Insurance				10,441.00
Total Other Purchased Services			\$46,987.62	\$2,041,925.70
600 <u>Supplies</u>				
610 General Supplies			4,798.75	4,798.75
650 Supplies & Fees – Technology Related				5,850.00
Total Supplies			\$4,798.75	\$10,648.75
Total 2719 Supervision of Student Transportation Services – All Other Supervision			\$51,786.37	\$2,131,321.45

LEA : 123466403 Pottstown SD

Printed 12/22/2022 12:13:10 PM

General Fund (10)

2750 Nonpublic Transportation	<u>Elementary</u>	<u>Secondary</u>	<u>Federal</u>	<u>Total</u>
500 <u>Other Purchased Services</u>				
513 Contracted Carriers				132,283.70
Total Other Purchased Services				\$132,283.70
Total 2750 Nonpublic Transportation				\$132,283.70

LEA : 123466403 Pottstown SD

Printed 12/22/2022 12:13:10 PM

General Fund (10)

2800 Support Services – Central	<u>Elementary</u>	<u>Secondary</u>	<u>Federal</u>	<u>Total</u>
100 <u>Personnel Services – Salaries</u>				
100 Personnel Services – Salaries				313,975.39
Total Personnel Services – Salaries				\$313,975.39
200 <u>Personnel Services – Employee Benefits</u>				
210 Group Insurance – Contracted Provider				77,080.58
220 Social Security Contributions				23,190.08
230 PSERS Retirement Contributions				107,260.56
299 All Other Employee Benefits				2,000.00
Total Personnel Services – Employee Benefits				\$209,531.22
500 <u>Other Purchased Services</u>				
530 Communications				890.27
580 Travel				630.24
Total Other Purchased Services				\$1,520.51
600 <u>Supplies</u>				
610 General Supplies				635.95
650 Supplies & Fees – Technology Related				92,605.38
Total Supplies				\$93,241.33
Total 2800 Support Services – Central				\$618,268.45

LEA : 123466403 Pottstown SD

Printed 12/22/2022 12:13:10 PM

General Fund (10)

2830 Staff Services

	<u>Elementary</u>	<u>Secondary</u>	<u>Federal</u>	<u>Total</u>
100 <u>Personnel Services – Salaries</u>				
100 Personnel Services – Salaries				180,713.95
Total Personnel Services – Salaries				\$180,713.95
200 <u>Personnel Services – Employee Benefits</u>				
210 Group Insurance – Contracted Provider				33,387.22
220 Social Security Contributions				13,475.18
230 PSERS Retirement Contributions				60,699.24
299 All Other Employee Benefits				2,000.00
Total Personnel Services – Employee Benefits				\$109,561.64
500 <u>Other Purchased Services</u>				
530 Communications				890.27
Total Other Purchased Services				\$890.27
600 <u>Supplies</u>				
610 General Supplies				635.95
Total Supplies				\$635.95
Total 2830 Staff Services				\$291,801.81

LEA : 123466403 Pottstown SD

Printed 12/22/2022 12:13:10 PM

General Fund (10)

2831 Supervision of Staff Services	<u>Elementary</u>	<u>Secondary</u>	<u>Federal</u>	<u>Total</u>
100 <u>Personnel Services – Salaries</u>				
100 Personnel Services – Salaries				180,713.95
Total Personnel Services – Salaries				\$180,713.95
200 <u>Personnel Services – Employee Benefits</u>				
210 Group Insurance – Contracted Provider				33,387.22
220 Social Security Contributions				13,475.18
230 PSERS Retirement Contributions				60,699.24
299 All Other Employee Benefits				2,000.00
Total Personnel Services – Employee Benefits				\$109,561.64
500 <u>Other Purchased Services</u>				
530 Communications				890.27
Total Other Purchased Services				\$890.27
600 <u>Supplies</u>				
610 General Supplies				171.95
Total Supplies				\$171.95
Total 2831 Supervision of Staff Services				\$291,337.81

LEA : 123466403 Pottstown SD

Printed 12/22/2022 12:13:10 PM

General Fund (10)

2832 Recruitment and Placement Services	<u>Elementary</u>	<u>Secondary</u>	<u>Federal</u>	<u>Total</u>
600 <u>Supplies</u>				
610 General Supplies				464.00
Total Supplies				\$464.00
Total 2832 Recruitment and Placement Services				\$464.00

LEA : 123466403 Pottstown SD

Printed 12/22/2022 12:13:10 PM

General Fund (10)

2840 Data Processing Services	<u>Elementary</u>	<u>Secondary</u>	<u>Federal</u>	<u>Total</u>
100 <u>Personnel Services – Salaries</u>				
100 Personnel Services – Salaries				133,261.44
Total Personnel Services – Salaries				\$133,261.44
200 <u>Personnel Services – Employee Benefits</u>				
210 Group Insurance – Contracted Provider				43,693.36
220 Social Security Contributions				9,714.90
230 PSERS Retirement Contributions				46,561.32
Total Personnel Services – Employee Benefits				\$99,969.58
500 <u>Other Purchased Services</u>				
580 Travel				630.24
Total Other Purchased Services				\$630.24
600 <u>Supplies</u>				
650 Supplies & Fees – Technology Related				92,605.38
Total Supplies				\$92,605.38
Total 2840 Data Processing Services				\$326,466.64

LEA : 123466403 Pottstown SD

Printed 12/22/2022 12:13:10 PM

General Fund (10)

2900 Other Support Services	<u>Elementary</u>	<u>Secondary</u>	<u>Federal</u>	<u>Total</u>
500 <u>Other Purchased Services</u>				
595 IU Payments By Withholding				15,859.82
Total Other Purchased Services				\$15,859.82
Total 2900 Other Support Services				\$15,859.82

LEA : 123466403 Pottstown SD

Printed 12/22/2022 12:13:10 PM

General Fund (10)

2910 Support Services Not Listed Elsewhere In the 2000 Series

<u>Elementary</u>	<u>Secondary</u>	<u>Federal</u>	<u>Total</u>
-------------------	------------------	----------------	--------------

500 Other Purchased Services

595 IU Payments By Withholding			15,859.82
--------------------------------	--	--	-----------

Total Other Purchased Services			\$15,859.82
---------------------------------------	--	--	--------------------

Total 2910 Support Services Not Listed Elsewhere In the 2000 Series			\$15,859.82
--	--	--	--------------------

LEA : 123466403 Pottstown SD

Printed 12/22/2022 12:13:16 PM

General Fund (10)

3000 Operation of Non-Instructional Services		Total
100	<u>Personnel Services – Salaries</u>	
100	Personnel Services – Salaries	522,663.54
Total Personnel Services – Salaries		\$522,663.54
200	<u>Personnel Services – Employee Benefits</u>	
210	Group Insurance – Contracted Provider	28,334.97
220	Social Security Contributions	39,664.77
230	PSERS Retirement Contributions	175,953.78
250	Unemployment Compensation	193.11
299	All Other Employee Benefits	1,350.00
Total Personnel Services – Employee Benefits		\$245,496.63
300	<u>Purchased Professional and Technical Services</u>	
330	Other Professional Services	61,517.99
350	Security / Safety Services	14,921.50
390	Other Purchased Professional and Technical Services	33,295.00
Total Purchased Professional and Technical Services		\$109,734.49
400	<u>Purchased Property Services</u>	
430	Repairs and Maintenance Services	476.25
440	Rentals	681.53
Total Purchased Property Services		\$1,157.78
500	<u>Other Purchased Services</u>	
510	Student Transportation Services	40,870.88
520	Insurance – General	2,627.08
530	Communications	633.18
580	Travel	18,273.82
Total Other Purchased Services		\$62,404.96
600	<u>Supplies</u>	
610	General Supplies	133,370.30
Total Supplies		\$133,370.30
800	<u>Other Objects</u>	
810	Dues and Fees	11,960.85
860	Grants To Municipal and Community Service Organizations	20,000.00
890	Miscellaneous Expenditures	150.00
Total Other Objects		\$32,110.85
Total 3000 Operation of Non-Instructional Services		\$1,106,938.55

LEA : 123466403 Pottstown SD

Printed 12/22/2022 12:13:16 PM

General Fund (10)

3200 Student Activities

	<u>Elementary</u>	<u>Secondary</u>	<u>Federal</u>	<u>Total</u>
100 <u>Personnel Services – Salaries</u>				
100 Personnel Services – Salaries				522,663.54
Total Personnel Services – Salaries				\$522,663.54
200 <u>Personnel Services – Employee Benefits</u>				
210 Group Insurance – Contracted Provider				28,334.97
220 Social Security Contributions				39,664.77
230 PSERS Retirement Contributions				175,953.78
250 Unemployment Compensation				193.11
299 All Other Employee Benefits				1,350.00
Total Personnel Services – Employee Benefits				\$245,496.63
300 <u>Purchased Professional and Technical Services</u>				
330 Other Professional Services				2,823.99
350 Security / Safety Services				14,921.50
390 Other Purchased Professional and Technical Services				33,295.00
Total Purchased Professional and Technical Services				\$51,040.49
400 <u>Purchased Property Services</u>				
430 Repairs and Maintenance Services				476.25
440 Rentals				681.53
Total Purchased Property Services				\$1,157.78
500 <u>Other Purchased Services</u>				
510 Student Transportation Services				40,870.88
520 Insurance – General				2,627.08
530 Communications				633.18
580 Travel				18,273.82
Total Other Purchased Services				\$62,404.96
600 <u>Supplies</u>				
610 General Supplies			2,292.40	122,773.60
Total Supplies			\$2,292.40	\$122,773.60
800 <u>Other Objects</u>				
810 Dues and Fees				11,960.85
Total Other Objects				\$11,960.85
Total 3200 Student Activities			\$2,292.40	\$1,017,497.85

Printed 12/22/2022 12:13:16 PM

Page 136

LEA : 123466403 Pottstown SD

Printed 12/22/2022 12:13:20 PM

General Fund (10)

4000 Facilities Acquisition, Construction and Improvement Services		<u>Total</u>
400 <u>Purchased Property Services</u>		
450 Construction Services		509,892.74
Total Purchased Property Services		\$509,892.74
700 <u>Property</u>		
752 Capital Equipment – Original and Additional		246,974.50
Total Property		\$246,974.50
Total 4000 Facilities Acquisition, Construction and Improvement Services		\$756,867.24

LEA : 123466403 Pottstown SD

Printed 12/22/2022 12:13:20 PM

General Fund (10)

4600 Existing Building Improvement Services	<u>Elementary</u>	<u>Secondary</u>	<u>Federal</u>	<u>Total</u>
400 <u>Purchased Property Services</u>				
450 Construction Services				509,892.74
Total Purchased Property Services				\$509,892.74
700 <u>Property</u>				
752 Capital Equipment – Original and Additional				246,974.50
Total Property				\$246,974.50
Total 4600 Existing Building Improvement Services				\$756,867.24

LEA : 123466403 Pottstown SD

Printed 12/22/2022 12:13:22 PM

General Fund (10)

5000 Other Expenditures and Financing Uses

Total

800	<u>Other Objects</u>	
830	Interest	1,118,176.86
880	Refunds of Prior Years' Receipts	1,793.40
Total Other Objects		\$1,119,970.26
900	<u>Other Uses of Funds</u>	
910	Redemption of Principal	2,610,073.93
Total Other Uses of Funds		\$2,610,073.93
Total 5000 Other Expenditures and Financing Uses		\$3,730,044.19

LEA : 123466403 Pottstown SD

Printed 12/22/2022 12:13:22 PM

General Fund (10)

5100 Debt Service / Other Expenditures and Financing Uses	<u>Elementary</u>	<u>Secondary</u>	<u>Federal</u>	<u>Total</u>
800 <u>Other Objects</u>				
830 Interest				1,118,176.86
880 Refunds of Prior Years' Receipts				1,793.40
Total Other Objects				\$1,119,970.26
900 <u>Other Uses of Funds</u>				
910 Redemption of Principal				2,610,073.93
Total Other Uses of Funds				\$2,610,073.93
Total 5100 Debt Service / Other Expenditures and Financing Uses				\$3,730,044.19

LEA : 123466403 Pottstown SD

Printed 12/22/2022 12:13:22 PM

General Fund (10)				
5110 Debt Service	<u>Elementary</u>	<u>Secondary</u>	<u>Federal</u>	<u>Total</u>
800 <u>Other Objects</u>				
830 Interest				1,110,591.31
Total Other Objects				\$1,110,591.31
900 <u>Other Uses of Funds</u>				
910 Redemption of Principal				2,526,000.00
Total Other Uses of Funds				\$2,526,000.00
Total 5110 Debt Service				\$3,636,591.31

LEA : 123466403 Pottstown SD

Printed 12/22/2022 12:13:22 PM

General Fund (10)

5130 Refund of Prior Year Revenues / Receipts	<u>Elementary</u>	<u>Secondary</u>	<u>Federal</u>	<u>Total</u>
800 <u>Other Objects</u>				
880 Refunds of Prior Years' Receipts				1,793.40
Total Other Objects				\$1,793.40
Total 5130 Refund of Prior Year Revenues / Receipts				\$1,793.40

LEA : 123466403 Pottstown SD

Printed 12/22/2022 12:13:22 PM

General Fund (10)

5140 Leases	<u>Elementary</u>	<u>Secondary</u>	<u>Federal</u>	<u>Total</u>
800 <u>Other Objects</u>				
830 Interest				7,585.55
Total Other Objects				\$7,585.55
900 <u>Other Uses of Funds</u>				
910 Redemption of Principal				84,073.93
Total Other Uses of Funds				\$84,073.93
Total 5140 Leases				\$91,659.48

LEA : 123466403 Pottstown SD

Printed 12/22/2022 12:13:18 PM

Athletic / School-Sponsored Extra Curricular Activities Fund (29)

3000 Operation of Non-Instructional Services	<u>Total</u>
300 <u>Purchased Professional and Technical Services</u>	
390 Other Purchased Professional and Technical Services	15,798.90
Total Purchased Professional and Technical Services	\$15,798.90
Total 3000 Operation of Non-Instructional Services	\$15,798.90

LEA : 123466403 Pottstown SD

Printed 12/22/2022 12:13:18 PM

Athletic / School-Sponsored Extra Curricular Activities Fund (29)

3200 Student Activities	<u>Elementary</u>	<u>Secondary</u>	<u>Federal</u>	<u>Total</u>
300 <u>Purchased Professional and Technical Services</u>				
390 Other Purchased Professional and Technical Services				15,798.90
Total Purchased Professional and Technical Services				\$15,798.90
Total 3200 Student Activities				\$15,798.90

LEA : 123466403 Pottstown SD

Printed 12/22/2022 12:13:14 PM

Debt Service Fund (40)

2000 Support Services

Total

800 Other Objects

810 Dues and Fees

175,487.97

Total Other Objects

\$175,487.97

Total 2000 Support Services

\$175,487.97

LEA : 123466403 Pottstown SD

Printed 12/22/2022 12:13:14 PM

Debt Service Fund (40)				
2300 Support Services – Administration	<u>Elementary</u>	<u>Secondary</u>	<u>Federal</u>	<u>Total</u>
800 <u>Other Objects</u>				
810 Dues and Fees				175,487.97
Total Other Objects				\$175,487.97
Total 2300 Support Services – Administration				\$175,487.97

LEA : 123466403 Pottstown SD

Printed 12/22/2022 12:13:14 PM

Debt Service Fund (40)				
2390 Other Administration Services	<u>Elementary</u>	<u>Secondary</u>	<u>Federal</u>	<u>Total</u>
800 <u>Other Objects</u>				
810 Dues and Fees				175,487.97
Total Other Objects				\$175,487.97
Total 2390 Other Administration Services				\$175,487.97

LEA : 123466403 Pottstown SD

Printed 12/22/2022 12:13:24 PM

Debt Service Fund (40)

5000 Other Expenditures and Financing Uses

Total

800 <u>Other Objects</u>	
830 Interest	119,867.83
Total Other Objects	\$119,867.83
900 <u>Other Uses of Funds</u>	
910 Redemption of Principal	9,650,000.00
Total Other Uses of Funds	\$9,650,000.00
Total 5000 Other Expenditures and Financing Uses	\$9,769,867.83

LEA : 123466403 Pottstown SD

Printed 12/22/2022 12:13:24 PM

Debt Service Fund (40)

5100 Debt Service / Other Expenditures and Financing Uses	<u>Elementary</u>	<u>Secondary</u>	<u>Federal</u>	<u>Total</u>
800 <u>Other Objects</u>				
830 Interest				119,867.83
Total Other Objects				\$119,867.83
900 <u>Other Uses of Funds</u>				
910 Redemption of Principal				9,650,000.00
Total Other Uses of Funds				\$9,650,000.00
Total 5100 Debt Service / Other Expenditures and Financing Uses				\$9,769,867.83

LEA : 123466403 Pottstown SD

Printed 12/22/2022 12:13:24 PM

Debt Service Fund (40)

5110 Debt Service	<u>Elementary</u>	<u>Secondary</u>	<u>Federal</u>	<u>Total</u>
800 <u>Other Objects</u>				
830 Interest				119,867.83
Total Other Objects				\$119,867.83
Total 5110 Debt Service				\$119,867.83

LEA : 123466403 Pottstown SD

Printed 12/22/2022 12:13:24 PM

Debt Service Fund (40)

5120 Debt Service – Refunded Bonds	<u>Elementary</u>	<u>Secondary</u>	<u>Federal</u>	<u>Total</u>
900 <u>Other Uses of Funds</u>				
910 Redemption of Principal				9,650,000.00
Total Other Uses of Funds				\$9,650,000.00
Total 5120 Debt Service – Refunded Bonds				\$9,650,000.00

LEA : 123466403 Pottstown SD

Printed 12/22/2022 12:13:26 PM

	<u>General Fund(10)</u>	<u>Student Sponsored Activity Fund(21)</u>	<u>Public Purpose Trust(27)</u>	<u>Other Compt Approved (28)</u>	<u>Athletic / Activity(29)</u>
1000 <u>Instruction</u>					
1100 Regular Programs - Elementary / Secondary	23,882,529.78				
1200 Special Programs - Elementary / Secondary	13,925,462.60				
1300 Vocational Education	1,623,088.62				
1400 Other Instructional Programs - Elementary / Secondary	1,005,434.92				
1500 Nonpublic School Programs	5,308.41				
1800 Pre-Kindergarten	2,793,884.33				
Total Instruction	\$43,235,708.66				
2000 <u>Support Services</u>					
2100 Support Services - Students	3,268,910.40				
2200 Support Services - Instructional Staff	2,997,293.71				
2300 Support Services - Administration	3,767,424.47				
2400 Support Services - Pupil Health	1,339,788.08				
2500 Support Services - Business	879,578.79				
2600 Operation and Maintenance of Plant Services	6,303,233.75				
2700 Student Transportation Services	2,263,605.15				
2800 Support Services - Central	618,268.45				
2900 Other Support Services	15,859.82				
Total Support Services	\$21,453,962.62				
3000 <u>Operation of Non-Instructional Services</u>					
3200 Student Activities	1,017,497.85				15,798.90
3300 Community Services	89,440.70				
Total Operation of Non-Instructional Services	\$1,106,938.55				\$15,798.90
4000 <u>Facilities Acquisition, Construction and Improvement Services</u>					
4600 Existing Building Improvement Services	756,867.24				
Total Facilities Acquisition, Construction and Improvement Services	\$756,867.24				
5000 <u>Other Expenditures and Financing Uses</u>					
5100 Debt Service / Other Expenditures and Financing Uses	3,730,044.19				
Total Other Expenditures and Financing Uses	\$3,730,044.19				
TOTAL ACTUAL EXPENDITURES & OTHER FINANCING USES	\$70,283,521.26				\$15,798.90

LEA : 123466403 Pottstown SD

Printed 12/22/2022 12:13:26 PM

	<u>Capital Reserve (690.1850)(31)</u>	<u>Capital Reserve (1431)(32)</u>	<u>Other Capital Projects Fund(39)</u>	<u>Debt Service(40)</u>	<u>Permanent(90)</u>
1000 <u>Instruction</u>					
1100 Regular Programs - Elementary / Secondary					
1200 Special Programs - Elementary / Secondary					
1300 Vocational Education					
1400 Other Instructional Programs - Elementary / Secondary					
1500 Nonpublic School Programs					
1800 Pre-Kindergarten					
Total Instruction					
2000 <u>Support Services</u>					
2100 Support Services - Students					
2200 Support Services - Instructional Staff					
2300 Support Services - Administration				175,487.97	
2400 Support Services - Pupil Health					
2500 Support Services - Business					
2600 Operation and Maintenance of Plant Services					
2700 Student Transportation Services					
2800 Support Services - Central					
2900 Other Support Services					
Total Support Services				\$175,487.97	
3000 <u>Operation of Non-Instructional Services</u>					
3200 Student Activities					
3300 Community Services					
Total Operation of Non-Instructional Services					
4000 <u>Facilities Acquisition, Construction and Improvement Services</u>					
4600 Existing Building Improvement Services					
Total Facilities Acquisition, Construction and Improvement Services					
5000 <u>Other Expenditures and Financing Uses</u>					
5100 Debt Service / Other Expenditures and Financing Uses				9,769,867.83	
Total Other Expenditures and Financing Uses				\$9,769,867.83	
TOTAL ACTUAL EXPENDITURES & OTHER FINANCING USES				\$9,945,355.80	

LEA : 123466403 Pottstown SD

Printed 12/22/2022 12:13:26 PM

	<u>Total</u>
1000 <u>Instruction</u>	
1100 Regular Programs - Elementary / Secondary	23,882,529.78
1200 Special Programs - Elementary / Secondary	13,925,462.60
1300 Vocational Education	1,623,088.62
1400 Other Instructional Programs - Elementary / Secondary	1,005,434.92
1500 Nonpublic School Programs	5,308.41
1800 Pre-Kindergarten	2,793,884.33
Total Instruction	\$43,235,708.66
2000 <u>Support Services</u>	
2100 Support Services - Students	3,268,910.40
2200 Support Services - Instructional Staff	2,997,293.71
2300 Support Services - Administration	3,942,912.44
2400 Support Services - Pupil Health	1,339,788.08
2500 Support Services - Business	879,578.79
2600 Operation and Maintenance of Plant Services	6,303,233.75
2700 Student Transportation Services	2,263,605.15
2800 Support Services - Central	618,268.45
2900 Other Support Services	15,859.82
Total Support Services	\$21,629,450.59
3000 <u>Operation of Non-Instructional Services</u>	
3200 Student Activities	1,033,296.75
3300 Community Services	89,440.70
Total Operation of Non-Instructional Services	\$1,122,737.45
4000 <u>Facilities Acquisition, Construction and Improvement Services</u>	
4600 Existing Building Improvement Services	756,867.24
Total Facilities Acquisition, Construction and Improvement Services	\$756,867.24
5000 <u>Other Expenditures and Financing Uses</u>	
5100 Debt Service / Other Expenditures and Financing Uses	13,499,912.02
Total Other Expenditures and Financing Uses	\$13,499,912.02
TOTAL ACTUAL EXPENDITURES & OTHER FINANCING USES	\$80,244,675.96

LEA : 123466403 Pottstown SD

Printed 12/22/2022 12:13:34 PM

PSERS Salary Data (Salary Data should relate to the General Fund only)

Amount	Description	Amount
	Total Salary Base for salaries subject to PSERS withholding	25,899,385.00
	Total Federally Funded salaries subject to PSERS withholding	2,958,860.10

Title I Expenditure Data

Amount	Description	Amount
	Expenditures Funded with Current Title I Funds	1,438,070.00
	Expenditures Funded with Carry over Title I Funds	
Total Title I Expenditure Data		\$1,438,070.00

Title IV Revenue Data

Amount	Description	Amount
	Revenue from Title IV-A-1: Student Support and Academic Enrichment Grants	98,145.00
	Revenue from Title IV-B: 21st Century Community Learning Centers	385,282.28

Title V Revenue Data

Amount	Description	Amount
	Revenue from Title V-B-2: Rural and Low-Income School Programs	
	Revenue from Title V-B-1: Small Rural School Achievement (Directly from the Federal Govt)	

1 .	<u>Current Special Education Expenditures within Function 1000.\r\nSee list of exclusions in the note below.</u>	13,925,462.61
2 .	<u>Current Special Education Expenditures within Function 2000.\r\nSee list of exclusions in the note below.</u>	21,479.06
3 .	<u>Current Special Education Expenditures within Sub-Function 2100.\r\nThis data should also be included in line 2 above.\r\nSee list of exclusions in the note below.</u>	
4 .	<u>Current Special Education Expenditures within Sub-Function 2200.\r\nThis data should also be included in line 2 above.\r\nSee list of exclusions in the note below.</u>	
5 .	<u>Current Special Education Expenditures within Sub-Function 2700.\r\nThis data should also be included in line 2 above.\r\nSee list of exclusions in the note below.</u>	21,479.06
6 .	<u>Current Special Education Expenditures within Sub-Function 3100.\r\nSee list of exclusions in the note below.</u>	
7 .	<u>Current Special Education Expenditures within Sub-Function 3200.\r\nSee list of exclusions in the note below.</u>	

Note: The Current Special Education Expenditure amounts for each line should be calculated as follows:

- * Include the total expenditures for special education costs from all funds for the function/sub-function requested
- * Exclude data from sub-functions: 1243,1450,1500,1600,1807,2280,2450,2750,2990
- * Exclude data from objects: 322,511,512,516,561,562,564,566,592,593,594,595,596,597,700,830,899

Benefits for Staff Relative to Collective Bargaining Agreements

	OBJECT	COVERED	NOT COVERED	TOTAL
10 General Fund				
	211 Medical Insurance			
	212 Dental Insurance	78,648.33	118,953.93	197,602.26
	215 Eye Care Insurance	2,834.02	15,119.94	17,953.96
	216 Prescription Insurance			
	271 Self-Insurance Medical Benefits	2,021,678.58	1,009,026.06	3,030,704.64
	272 Self-Insurance Dental Benefits			
	275 Self-Insurance Eye Care Benefits			
	276 Self-Insurance Prescription Benefits	459,837.14	400,736.79	860,573.93
	FUND TOTAL	\$2,562,998.07	\$1,543,836.72	\$4,106,834.79
50 Enterprise Fund				
	211 Medical Insurance			
	212 Dental Insurance	13,633.79		13,633.79
	215 Eye Care Insurance	850.09		850.09
	216 Prescription Insurance			
	271 Self-Insurance Medical Benefits	124,659.46		124,659.46
	272 Self-Insurance Dental Benefits			
	275 Self-Insurance Eye Care Benefits			
	276 Self-Insurance Prescription Benefits	35,515.39		35,515.39
	FUND TOTAL	\$174,658.73		\$174,658.73
60 Internal Service Fund	No Self Insurance data to report			
	211 Medical Insurance			
	212 Dental Insurance			
	215 Eye Care Insurance			
	216 Prescription Insurance			
	271 Self-Insurance Medical Benefits			
	272 Self-Insurance Dental Benefits			
	275 Self-Insurance Eye Care Benefits			
	276 Self-Insurance Prescription Benefits			
	FUND TOTAL			
Total of All Funds		\$2,737,656.80	\$1,543,836.72	\$4,281,493.52

LEA : 123466403 Pottstown SD

Printed 12/22/2022 12:13:40 PM

Function	Special Education (Prior Year)	Nonspecial Education (Prior Year)	Total (Prior Year)	Special Education (Current Year)	Nonspecial Education (Current Year)	Total (Current Year)
2120 Guidance Services		574,918.70	574,918.70		813,520.92	813,520.92
2140 Psychological Services	867,233.49	216,808.36	1,084,041.85	1,008,902.93	252,225.73	1,261,128.66
2150 Speech Pathology and Audiology Services	629,196.48		629,196.48	694,941.53		694,941.53
2160 Social Work Services	45,820.82	30,547.21	76,368.03	100,374.80	66,916.53	167,291.33
2260 Instruction and Curriculum Development Services		437,017.48	437,017.48		539,456.70	539,456.70
2350 Legal and Accounting Services		14,165.14	14,165.14		2,760.00	2,760.00
2420 Medical Services	568,901.85	5,608.78	574,510.63	765,929.96	7,551.27	773,481.23
2440 Nursing Services		458,523.31	458,523.31		561,974.83	561,974.83
2700 Student Transportation Services	1,024,098.08	404,459.33	1,428,557.41	1,527,892.53	603,428.92	2,131,321.45
Total	\$3,135,250.72	\$2,142,048.31	\$5,277,299.03	\$4,098,041.75	\$2,847,834.90	\$6,945,876.65

LEA : 123466403 Pottstown SD

Printed 12/22/2022 12:13:42 PM

(PRINCIPAL AMOUNTS ONLY)

GOVERNMENTAL FUNDS/ ACTIVITIES

	Short-Term Borrowing	General Obligation Bonds/Notes	Authority Building Obligations	OLTD, Ext Term Fin, Leases	Other Post- Employment Benefits (OPEB)	Compensated Absences	Net Pension Liability	Total
1. Debt at Beginning of Fiscal Year		42,576,000.00			8,796,971.00	582,542.00	83,218,485.00	135,173,998.00
2. Additional Debt Incurred During Year		9,640,000.00			842,362.00	477,907.00		10,960,269.00
3. Retirements and Repayments		12,101,000.00			550,422.00	508,620.00	13,637,347.00	26,797,389.00
4. Debt at End of Fiscal Year		40,115,000.00			9,088,911.00	551,829.00	69,581,138.00	119,336,878.00
5. Accreted Interest at End Of Fiscal Year								
6. Total Debt and Accreted Interest		40,115,000.00			9,088,911.00	551,829.00	69,581,138.00	119,336,878.00
7. Current Portion P&I - Due within 1 year		2,595,000.00						2,595,000.00
8. Interest Paid during current fiscal year		1,230,459.75						1,230,459.75

(PRINCIPAL AMOUNTS ONLY)

PROPRIETARY FUNDS

	Short-Term Borrowing	General Obligation Bonds/Notes	Authority Building Obligations	OLTD, Ext Term Fin, Leases	Other Post- Employment Benefits (OPEB)	Compensated Absences	Net Pension Liability	Total
1. Debt at Beginning of Fiscal Year					237,990.00	21,136.00	1,915,515.00	2,174,641.00
2. Additional Debt Incurred During Year					10,737.00	7,749.00		18,486.00
3. Retirements and Repayments					12,743.00	4,307.00	1,084,653.00	1,101,703.00
4. Debt at End of Fiscal Year					235,984.00	24,578.00	830,862.00	1,091,424.00
5. Accreted Interest at End Of Fiscal Year								
6. Total Debt and Accreted Interest					235,984.00	24,578.00	830,862.00	1,091,424.00
7. Current Portion P&I - Due within 1 year								
8. Interest Paid during current fiscal year								

LEA : 123466403 Pottstown SD

Printed 12/22/2022 12:13:42 PM

Total Principal and Interest Payments Made by Your School - All Funds

Function	Fund		Principal (910)	Principal (920)	Interest (830)	Total (Principal +Interest)	Misc Other Uses (990)
5110	10	General Fund	2,526,000.00		1,110,591.31	3,636,591.31	
5110	20	Special Revenue Funds					
5110	30	Capital Projects Funds					
5110	40	Debt Service Fund			119,867.83	119,867.83	
5110	90	Permanent Fund					
5120	10	General Fund					
5120	20	Special Revenue Funds					
5120	30	Capital Projects Funds					
5120	40	Debt Service Fund	9,650,000.00			9,650,000.00	
5140	10	General Fund	84,073.93		7,585.55	91,659.48	
5140	20	Special Revenue Funds					
5140	30	Capital Projects Funds					
5140	40	Debt Service Fund					
5140	90	Permanent Fund					
Total Debt Payments - Governmental Funds			\$12,260,073.93		\$1,238,044.69	\$13,498,118.62	

Function	Fund		Principal (910)	Principal (920)	Interest (830)	Total (Principal +Interest)
5110	50	Enterprise Fund				
5110	60	Internal Service Fund				
5120	50	Enterprise Fund				
5120	60	Internal Service Fund				
5140	50	Enterprise Fund				
5140	60	Internal Service Fund				
Total Debt Payments - Proprietary Funds						

LEA : 123466403 Pottstown SD

Printed 12/22/2022 12:13:42 PM

Debt Details
Governmental Funds/ Activities

Debt Category	Debt Issue Date (MM/YYYY)	Principal Amounts Only				Current Portion Due Within One Year (Principal and Interest)	Interest Paid During Fiscal Year
		Debt at Beginning of Fiscal Year	Additions	Reductions / Repayments	Debt at End of Fiscal Year		
General Obligation Bonds/Notes – CIB	10/2021		9,640,000.00		9,640,000.00	55,000.00	248,833.75
General Obligation Bonds/Notes – CIB	06/2020	8,685,000.00		1,380,000.00	7,305,000.00	1,550,000.00	327,400.00
General Obligation Bonds/Notes – CIB	11/2019	9,655,000.00		10,000.00	9,645,000.00	10,000.00	224,140.00
General Obligation Bonds/Notes – CIB	03/2019	7,000,000.00		20,000.00	6,980,000.00	25,000.00	222,559.00
General Obligation Bonds/Notes – CIB	12/2018	7,450,000.00		905,000.00	6,545,000.00	955,000.00	206,300.00
General Obligation Bonds/Notes – CIB	12/2016	9,650,000.00		9,650,000.00			
General Obligation Bonds/Notes – CIB	11/2002	136,000.00		136,000.00			1,227.00
Compensated Absences		582,542.00	477,907.00	508,620.00	551,829.00		
Other Post-Employment Benefits (OPEB)		8,796,971.00	842,362.00	550,422.00	9,088,911.00		
Net Pension Liability		83,218,485.00		13,637,347.00	69,581,138.00		
Totals for Debt Entered:		\$135,173,998.00	\$10,960,269.00	\$26,797,389.00	\$119,336,878.00	\$2,595,000.00	\$1,230,459.75

Bond Details
Proprietary Funds

Debt Category	Debt Issue Date (MM/YYYY)	Principal Amounts Only				Current Portion Due Within One Year (Principal and Interest)	Interest Paid During Fiscal Year
		Debt at Beginning of Fiscal Year	Additions	Reductions / Repayments	Debt at End of Fiscal Year		
Compensated Absences		21,136.00	7,749.00	4,307.00	24,578.00		
Other Post-Employment Benefits (OPEB)		237,990.00	10,737.00	12,743.00	235,984.00		
Net Pension Liability		1,915,515.00		1,084,653.00	830,862.00		
Totals for Debt Entered:		\$2,174,641.00	\$18,486.00	\$1,101,703.00	\$1,091,424.00		

LEA : 123466403 Pottstown SD

General Fund (10)

Section 1: Tuition/Purchased Services as Reported within Expenditure Detail	Amount
Tuition Reported in General Fund Expenditures 1000-560	5,924,675.53
Purchased Services in General Fund Expenditures 1000-594 and 1000-597	
Section 1 Total	\$5,924,675.53

Section 2: Tuition Paid to Institution Types During Fiscal Year	Tuition Paid For Nonspecial Education	Tuition Paid For Special Education	Total
1 1306 Institutions			
2 Institutionalized Children's Programs			
3 Juveniles Incarcerated in Adult Facilities			
4 Residential Treatment Facilities			
5 Other Local Education Agencies	104,846.69	15,247.71	120,094.40
6 Brick and Mortar Charter Schools	536,913.99	655,811.81	1,192,725.80
7 Cyber Charter Schools	1,633,794.20	1,316,124.77	2,949,918.97
8 Career and Technology Centers			
9 Approved Private Schools		11,603.30	11,603.30
10 PA Chartered Schools for the Deaf and Blind			
11 Private Residential Rehabilitative Institutions	5,924.91		5,924.91
12 Juvenile Detention Centers			
13 Special Program Jointures			
14 Other Tuition Not Included Elsewhere In This Section	18,153.25	1,626,254.90	1,644,408.15
Section 2 Total	\$2,299,633.04	\$3,625,042.49	\$5,924,675.53

1 .	<u>Student Transportation Services for Educational Field Trips</u>	
2 .	<u>Student Transportation Services for Student Activities</u>	40,870.88
3 .	<u>Rental of Vehicles for Student Transportation Services</u>	
4 .	<u>Capital Reserve Funds</u>	

Include only district-owned transportation expenditures paid from State or local money.
DO NOT include federal expenditures or payments to contract service providers.
Contracted transportation services should not be recorded on this schedule.

LEA : 123466403 Pottstown SD

Printed 12/22/2022 12:13:54 PM

Food Service / Cafeteria Operations Fund (51)

3000 Operation of Non-Instructional Services

Total

100 Personnel Services – Salaries	564,602.18
Total Personnel Services – Salaries	\$564,602.18
200 Personnel Services – Employee Benefits	
210 Group Insurance – Contracted Provider	176,699.15
220 Social Security Contributions	40,684.82
230 PSERS Retirement Contributions	(101,690.17)
250 Unemployment Compensation	1,791.99
280 Other Post-Employment Benefits (OPEB)	1,970.00
299 All Other Employee Benefits	5,280.00
Total Personnel Services – Employee Benefits	\$124,735.79
300 Purchased Professional and Technical Services	
330 Other Professional Services	32,549.92
390 Other Purchased Professional and Technical Services	1,443.51
Total Purchased Professional and Technical Services	\$33,993.43
400 Purchased Property Services	
410 Cleaning Services	4,426.86
430 Repairs and Maintenance Services	2,906.94
490 Other Purchased Property Services	1,663.07
Total Purchased Property Services	\$8,996.87
500 Other Purchased Services	
530 Communications	1,330.15
580 Travel	122.02
Total Other Purchased Services	\$1,452.17
600 Supplies	
610 General Supplies	139,723.83
630 Food	1,024,867.20
640 Books and Periodicals	9,565.00
Total Supplies	\$1,174,156.03
700 Property	
740 Depreciation	20,184.00
Total Property	\$20,184.00
800 Other Objects	
810 Dues and Fees	1,730.28
890 Miscellaneous Expenditures	540.00
Total Other Objects	\$2,270.28
Total 3000 Operation of Non-Instructional Services	\$1,930,390.75

LEA : 123466403 Pottstown SD

Printed 12/22/2022 12:13:54 PM

Food Service / Cafeteria Operations Fund (51)

3100 Food Services	Elementary	Secondary	Federal	Total
100 <u>Personnel Services – Salaries</u>				
100 Personnel Services – Salaries				564,602.18
Total Personnel Services – Salaries				\$564,602.18
200 <u>Personnel Services – Employee Benefits</u>				
210 Group Insurance – Contracted Provider				176,699.15
220 Social Security Contributions				40,684.82
230 PSERS Retirement Contributions				(101,690.17)
250 Unemployment Compensation				1,791.99
280 Other Post-Employment Benefits (OPEB)				1,970.00
299 All Other Employee Benefits				5,280.00
Total Personnel Services – Employee Benefits				\$124,735.79
300 <u>Purchased Professional and Technical Services</u>				
330 Other Professional Services				32,549.92
390 Other Purchased Professional and Technical Services				1,443.51
Total Purchased Professional and Technical Services				\$33,993.43
400 <u>Purchased Property Services</u>				
410 Cleaning Services				4,426.86
430 Repairs and Maintenance Services				2,906.94
490 Other Purchased Property Services				1,663.07
Total Purchased Property Services				\$8,996.87
500 <u>Other Purchased Services</u>				
530 Communications				1,330.15
580 Travel				122.02
Total Other Purchased Services				\$1,452.17
600 <u>Supplies</u>				
610 General Supplies				139,723.83
630 Food				1,024,867.20
640 Books and Periodicals				9,565.00
Total Supplies				\$1,174,156.03
700 <u>Property</u>				
740 Depreciation				20,184.00
Total Property				\$20,184.00
800 <u>Other Objects</u>				
810 Dues and Fees				1,730.28
890 Miscellaneous Expenditures				540.00
Total Other Objects				\$2,270.28
Total 3100 Food Services				\$1,930,390.75

LEA : 123466403 Pottstown SD

Printed 12/22/2022 12:13:56 PM

Food Service / Cafeteria Operations Fund (51)

5000 Other Expenditures and Financing Uses

Total

900 Other Uses of Funds

900 Other Uses of Funds

51,992.87

Total Other Uses of Funds

\$51,992.87

Total 5000 Other Expenditures and Financing Uses

\$51,992.87

LEA : 123466403 Pottstown SD

Printed 12/22/2022 12:13:56 PM

Food Service / Cafeteria Operations Fund (51)

5410 General Fund Intrafund Transfers	<u>Elementary</u>	<u>Secondary</u>	<u>Federal</u>	<u>Total</u>
900 <u>Other Uses of Funds</u>				
900 Other Uses of Funds				51,992.87
Total Other Uses of Funds				\$51,992.87
Total 5410 General Fund Intrafund Transfers				\$51,992.87

LEA : 123466403 Pottstown SD

Printed 12/22/2022 12:13:52 PM

Internal Service Fund (60)

2000 Support Services

Total

200 Personnel Services – Employee Benefits

210 Group Insurance – Contracted Provider	5,842,109.00
---	--------------

Total Personnel Services – Employee Benefits	\$5,842,109.00
---	-----------------------

800 Other Objects

810 Dues and Fees	250,063.00
-------------------	------------

Total Other Objects	\$250,063.00
----------------------------	---------------------

Total 2000 Support Services	\$6,092,172.00
------------------------------------	-----------------------

LEA : 123466403 Pottstown SD

Printed 12/22/2022 12:13:52 PM

Internal Service Fund (60)

2300 Support Services – Administration	<u>Elementary</u>	<u>Secondary</u>	<u>Federal</u>	<u>Total</u>
200 <u>Personnel Services – Employee Benefits</u>				
210 Group Insurance – Contracted Provider				5,842,109.00
Total Personnel Services – Employee Benefits				\$5,842,109.00
800 <u>Other Objects</u>				
810 Dues and Fees				250,063.00
Total Other Objects				\$250,063.00
Total 2300 Support Services – Administration				\$6,092,172.00

LEA : 123466403 Pottstown SD

Printed 12/22/2022 12:13:52 PM

Internal Service Fund (60)

2390 Other Administration Services	<u>Elementary</u>	<u>Secondary</u>	<u>Federal</u>	<u>Total</u>
200 <u>Personnel Services – Employee Benefits</u>				
210 Group Insurance – Contracted Provider				5,842,109.00
Total Personnel Services – Employee Benefits				\$5,842,109.00
800 <u>Other Objects</u>				
810 Dues and Fees				250,063.00
Total Other Objects				\$250,063.00
Total 2390 Other Administration Services				\$6,092,172.00

	<u>Food Service(51)</u>	<u>Child Care Operations(52)</u>	<u>Other Enterprise(58)</u>	<u>Internal Service(60)</u>	<u>Total</u>
2000 <u>Support Services</u>					
2300 Support Services - Administration				6,092,172.00	6,092,172.00
Total Support Services				\$6,092,172.00	\$6,092,172.00
3000 <u>Operation of Non-Instructional Services</u>					
3100 Food Services	1,930,390.75				1,930,390.75
Total Operation of Non-Instructional Services	\$1,930,390.75				\$1,930,390.75
5000 <u>Other Expenditures and Financing Uses</u>					
5400 Intrafund Transfers Out	51,992.87				51,992.87
Total Other Expenditures and Financing Uses	\$51,992.87				\$51,992.87
TOTAL ACTUAL EXPENDITURES & OTHER FINANCING USES	\$1,982,383.62			\$6,092,172.00	\$8,074,555.62

LEA : 123466403 Pottstown SD

Printed 12/22/2022 12:14:03 PM

Fund	School	School Number	Local Personnel	Local Nonpersonnel	State Personnel	State Nonpersonnel	Federal Personnel	Federal Nonpersonnel	Total	Explanation
10										
	Barth El Sch	3345	1,934,579.67	479,219.19	1,895,806.75	469,614.66	782,885.95	143,214.41	5,705,320.63	
	Franklin El Sch	3339	1,879,491.30	477,925.41	1,841,822.47	468,346.81	529,163.69	145,287.14	5,342,036.82	
	Lincoln El Sch	3341	1,942,526.49	521,503.81	1,903,594.29	511,051.81	598,420.36	143,375.04	5,620,471.80	
	Pottstown MS	3346	5,858,247.17	1,542,415.97	5,740,835.95	1,511,502.80	1,320,924.28	468,948.00	16,442,874.17	
	Pottstown SHS	3348	6,110,539.11	1,724,285.26	5,988,071.45	1,689,727.06	929,516.42	500,930.75	16,943,070.05	
	Rupert El Sch	3342	1,853,781.69	497,154.75	1,816,628.12	487,190.75	489,361.97	149,718.92	5,293,836.20	
Total			19,579,165.43	5,242,504.39	19,186,759.03	5,137,433.89	4,650,272.67	1,551,474.26	55,347,609.67	